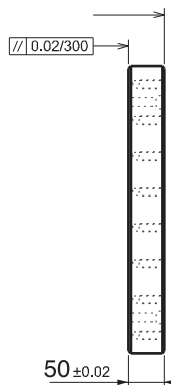
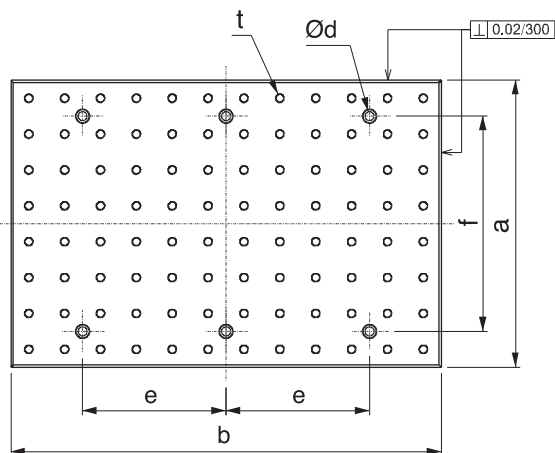


| Referans Nr. | a   | b    | Ød | e | f | t   | (kg) |
|--------------|-----|------|----|---|---|-----|------|
| 2530-040012  | 400 | 600  | 18 | - | - | M12 | 73   |
| 2530-050012  | 500 | 600  | 18 | - | - | M12 | 112  |
| 2530-060012  | 600 | 800  | 18 | - | - | M12 | 162  |
| 2530-140012  | 400 | 800  | 18 | - | - | M12 | 119  |
| 2530-145012  | 450 | 900  | 18 | - | - | M12 | 151  |
| 2530-150012  | 500 | 1000 | 18 | - | - | M12 | 173  |

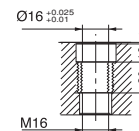
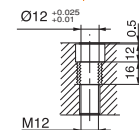
| Referans Nr. | a   | b    | Ød | e | f | t   | (kg) |
|--------------|-----|------|----|---|---|-----|------|
| 2530-040016  | 400 | 600  | 18 | - | - | M16 | 87   |
| 2530-050016  | 500 | 600  | 18 | - | - | M16 | 108  |
| 2530-060016  | 600 | 800  | 18 | - | - | M16 | 155  |
| 2530-140016  | 400 | 800  | 18 | - | - | M16 | 115  |
| 2530-145016  | 450 | 900  | 18 | - | - | M16 | 146  |
| 2530-150016  | 500 | 1000 | 18 | - | - | M16 | 171  |

### Product Nr. 2530 CNC Vertical Processing Plate with Holes

- Material : Casting
- It is in compliance with Standard Coupling Equipment.
- M12 - M16 thread gap on it's surface is  $50 \pm 0.02$ .
- It's steel bush threads are hardened.



Threaded body  
Reference No. 2530



Steel bush  
Reference No. 2540