
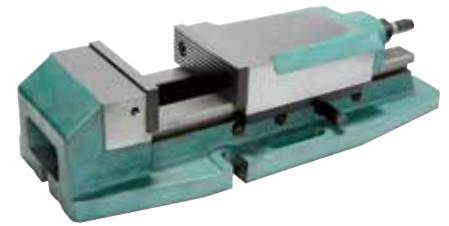


| Referenz-Nr.<br>Order No. | b     | Spannkraft<br>Clamping Force<br>kgf | <br>(kg) |
|---------------------------|-------|-------------------------------------|---|
| 2320-160200               | 0-200 | 4500                                | 60  |



**2320**

- Verwendung: Fräsen CNC und mechanisch, Schleifen und sonstige Industriemaschinen
- Aktivflächen komplett feingeschliffen und feingehärtet

**2320**

- Area of Using: CNC and mechanical milling machines, drilling machines, various industrial machines
- Entire moving surface is sensitively grinded and hardened.

