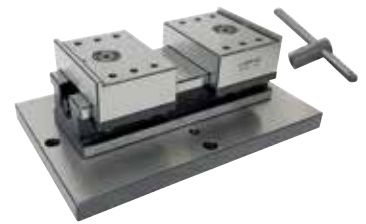


Ref.-Nr. Order No.	a	L	c/2	öffnen opens 2 x mm	Werkstückspannkapazität work piece coupling capacity (mm)	b	b1	b2 ±0,02	b3	p1	p2	s1	s2	Spannkraft Clamping Force kgf	Drehmoment Allowable Screw Torque (N-m)	sw	(kg)
2310-060	60	120	90	20	120	23.5	70.5	67.5	91	174	124	150	100	800	45	9	7
2310-078	78	180	130	30	180	33	97	93	126	224	124	200	100	1500	110	12	14
2310-100	100	220	154	38	220	35	99	95	130	274	174	250	150	1500	110	12	22
2310-125	125	260	174	47	260	38	108	103	141	324	174	300	150	2000	190	14	35
2310-157	157	350	208	75	350	46	123	118	164	424	224	400	200	2200	210	17	65

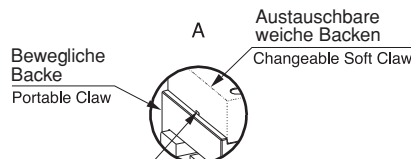
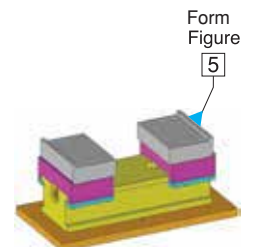
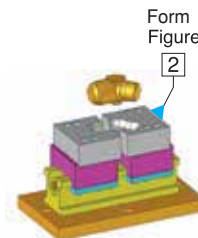
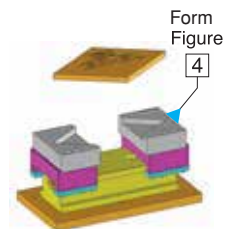
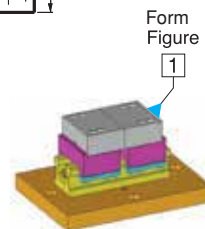
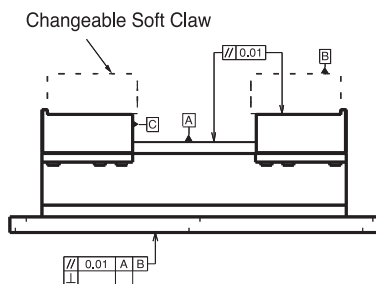
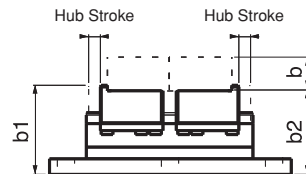
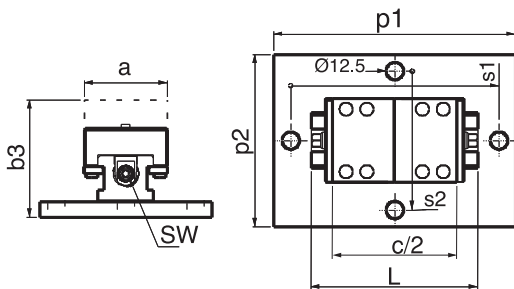
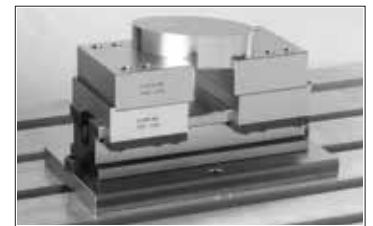


2310

- Zentrieren automatisch beim Spannen
- Vorteil: verwendbar auch bei unterschiedlichen Abmessungen (siehe Abb. 1-2-3-4-5-6)
- Verwendung: Fräsen CNC und mechanisch, Schleifen und sonstige Industriemaschinen
- Backen müssen separat bestellt werden.
- Schwarz beschichtet

2310

- This product fixes the material to be processes and at the same time it makes centering. The advantage of this system specially shows itself when making machinings of the materials having different outer diameter measurements as it implements this process without changing the center. It's other characteristic is to apply the form of the piece to be machined with soft claws (as seen in Figures: 1-2-3-4-5 and 6).
- Area of Using: This product is used in various industry machines such as CNC and mechanical milling machines, grinding and auger.
- Entire moving surface is sensitively grinded and hardened.
- You need to purchase jaws separate.
- Black coating



Wiederholgenauigkeit Demontage und Montage von weichen Backen ist ± 0.02 .
Demounting and mounting of portable jaw wedge soft claws is ± 0.02 .

