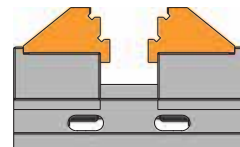
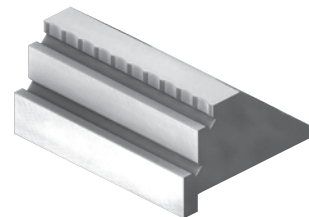
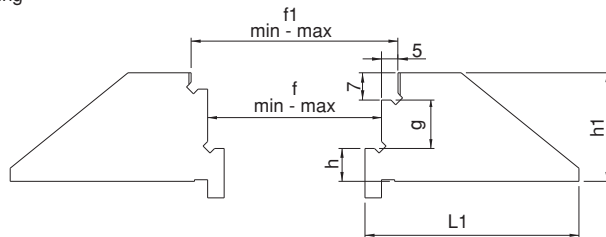
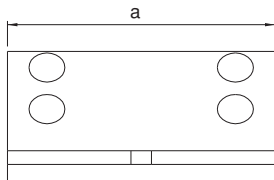


Referenz-Nr. Order No.	f min-max	f1 min-max	h	h1	g	L1	a
2310-23150605	10-50	20-60	7	23.5	11.5	45	60
2310-23150785	10-70	20-80	10	33	16	65	78
2310-23151005	10-86	20-96	10	35	18	77	100
2310-23151255	10-104	20-114	10	38	21	87	125
2310-23151575	10-160	20-170	10	46	29	104	157

- Gehärtet
- Schwarz beschichtet
- Hardened
- Nickel Coating



Passend für Produktnr.  
2310 und 2315