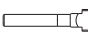

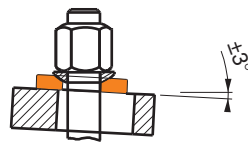
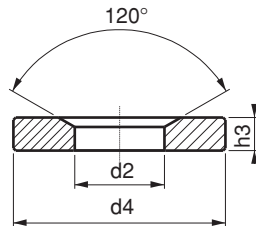


Referenz-Nr. Order No.		d2	d4	h3	 (g)
1930-06	M6	7.1	17	4	5.5
1930-08	M8	9.6	24	5	13
1930-10	M10	12	30	5	19
1930-12	M12	14.2	36	6	32
1930-14	M14	16.5	40	6	45
1930-16	M16	19	44	7	65
1930-20	M20	23.2	50	8	90
1930-24	M24	28	59	10	150
1930-30	M30	35	68	10	180
1930-36	M36	42	79	12	285
1930-42	M42	49	100	15	640



### DIN 6319G

#### 1930

- verwendbar mit Kegelscheibe DIN6319C auf winkelförmigen Flächen
- im Vergleich zu 6319D verwendbar bei größeren Löchern
- Gehärtet
- Schwarz beschichtet

#### 1930

- This washer is used with DIN 6319C rad-top washers on angled surfaces
- According to DIN 6319D, it is used in the holes with bigger diameter
- Hardened
- Black Coating