

Referenz-Nr. Order No.	dx xL	a	e	k	h-H	e1	e2	c	s	f	sw	Spannwerte Tightening Data		(g)
												Nm	kN	
1630-2022200	M20x22x200	21.7	35	14	25-75	49	69	92	12	30	30	679	215	1635
1630-2022250	M20x22x250	21.7	35	14	70-120	49	69	92	12	30	30	679	215	1720
1630-2424200	M24x24x200	23.7	40	16	25-75	53	74	92	12	30	36	1163	310	2075
1630-2424250	M24x24x250	23.7	40	16	70-120	53	74	92	12	30	36	1163	310	2250
1630-2428200	M24x28x200	27.7	44	18	25-75	53	74	92	12	30	36	1163	310	2180
1630-2428250	M24x28x250	27.7	44	18	70-120	53	74	92	12	30	36	1163	310	2340
1630-3036200	M30x36x200	35.6	54	22	25-75	68	88	94	14	30	46	2258	493	3660
1630-3036250	M30x36x250	35.6	54	22	70-120	68	88	94	14	30	46	2258	493	3910

1630

- Verwendung bei schweren Pressen, großen Werkzeugen
Lockerungen aufgrund Vibrationen werden durch Konterspannen verhindert
- Qualität 12.9
- Schwarz beschichtet

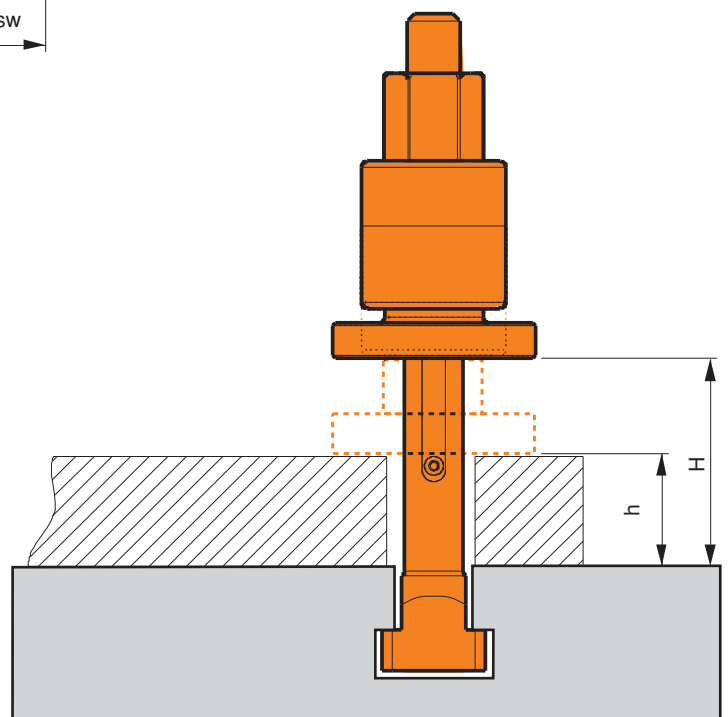
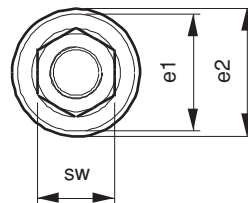
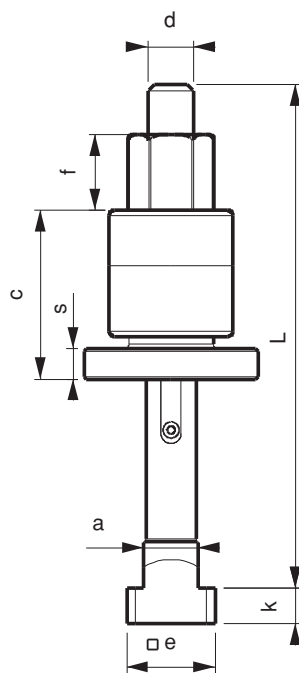
1630

- Because of it's contra tightening structure, it prevents loosening which may be generated by the vibration during working with heavy presses and big moulds.
- Quality 12.9
- Black coating



Hinweis: Bei Anwendung über 150 °C ist auf das Gewinde Loctite 8150 aufzutragen.

Note: Environments on the 150 °C when clamping action on the thread Loctite 8150 is used.



Loctite 8150