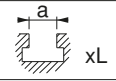

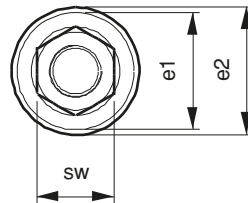
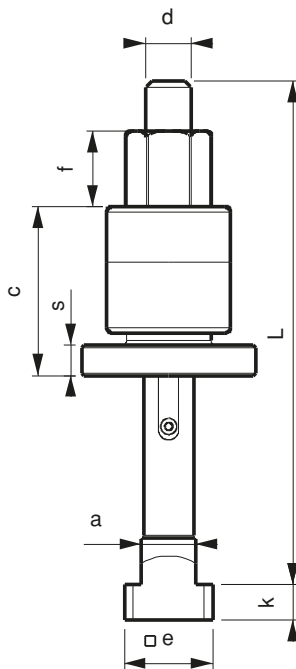


| Referans Nr. | dx  xL | a | e | k | h-H | e1 | e2 | c | s | f | sw | Tightening Data | |  |
|--------------|---|------|----|----|--------|----|----|----|----|----|----|-----------------|-----|---|
| | | | | | | | | | | | | Nm | kN | |
| 1630-2022200 | M20x22x200 | 21.7 | 35 | 14 | 25-75 | 49 | 69 | 92 | 12 | 30 | 30 | 679 | 215 | 1635 |
| 1630-2022250 | M20x22x250 | 21.7 | 35 | 14 | 70-120 | 49 | 69 | 92 | 12 | 30 | 30 | 679 | 215 | 1720 |
| 1630-2424200 | M24x24x200 | 23.7 | 40 | 16 | 25-75 | 53 | 74 | 92 | 12 | 30 | 36 | 1163 | 310 | 2075 |
| 1630-2424250 | M24x24x250 | 23.7 | 40 | 16 | 70-120 | 53 | 74 | 92 | 12 | 30 | 36 | 1163 | 310 | 2250 |
| 1630-2428200 | M24x28x200 | 27.7 | 44 | 18 | 25-75 | 53 | 74 | 92 | 12 | 30 | 36 | 1163 | 310 | 2180 |
| 1630-2428250 | M24x28x250 | 27.7 | 44 | 18 | 70-120 | 53 | 74 | 92 | 12 | 30 | 36 | 1163 | 310 | 2340 |
| 1630-3036200 | M30x36x200 | 35.6 | 54 | 22 | 25-75 | 68 | 88 | 94 | 14 | 30 | 46 | 2258 | 493 | 3660 |
| 1630-3036250 | M30x36x250 | 35.6 | 54 | 22 | 70-120 | 68 | 88 | 94 | 14 | 30 | 46 | 2258 | 493 | 3910 |

Product Nr. 1630 Combined T-Slot Bolt

- Because of its contra tightening structure, it prevents loosening which may be generated by the vibration during working with heavy presses and big moulds.
- Quality 12.9
- Black coating



Note: Environments on the 150 °C when clamping action on the thread
Loctite 8150 is used.



Loctite
8150

