


Referenz-Nr. Order No.	H1	S	S1	M	L2	L1	W	L	H4	d	P	H	D	W1	H2	W2	H3
1480-00012	80	10	11	M12	55	66	90	50	15	11	70	139	50	22	30	19	29
1480-00016	95	10	15	M16	65	79	100	60	20	13	80	165	60	28	35	24	35

Referenz-Nr. Order No.	Spannkraft Clamping Force Kgf	Drehmoment Allowable Screw Torque (N - m)	Spannrichtung Clamping Direction	 (kg)
1480-00012	600	28	im Uhrzeigersinn Clockwise	1.6
1480-00016	1000	55	im Uhrzeigersinn Clockwise	2.9



- 1480 Körper**
- Gehärtet
 - Schwarz beschichtet

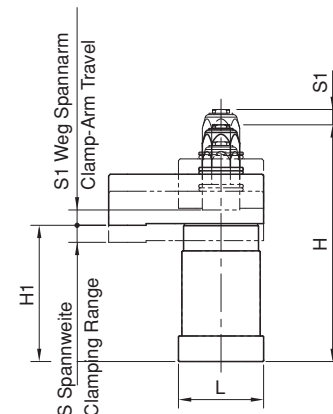
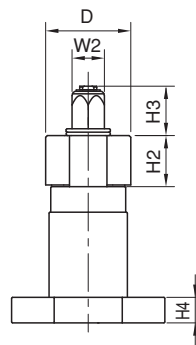
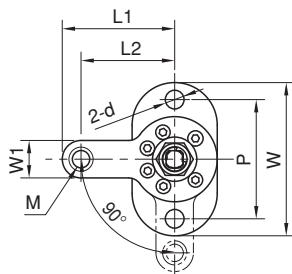
- 1480 Body**
- Hardened
 - Black coated

- Spannbacke**
- Gehärtet
 - Schwarz beschichtet

- Clamping Arm**
- Hardened
 - Black coated

- Eigenschaften**
- Der Klemmarm schwenkt schnell auf die Drehgeschwindigkeit eines Schlagschraubers ein, um schnell zu klemmen.
 - Spannt mit kurzer Bewegung

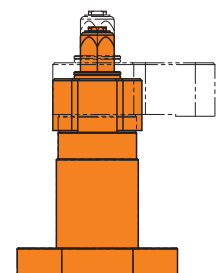
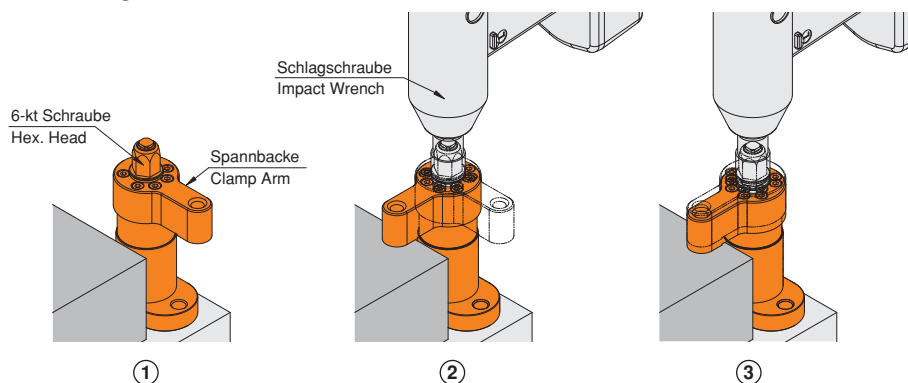
- Features**
- The clamp arm swings in swift response to the turning speed of an impact wrench, for quick clamping.
 - A short clamp-arm travel allows quick clamping.



- Hinweis**
- Spannen unbedingt mit Drehmomentschlüssel

- Note**
- Do not use applying higher torque than allowable for a long period of time, to avoid damage. Using a torque-settable impact wrench is recommended.

Verwendung / How To Use



Spannen schwenkbar für Roboterfertigung
For robotized production lines, use Spiral-Acting Swing Clamps.