
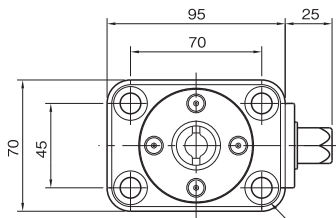
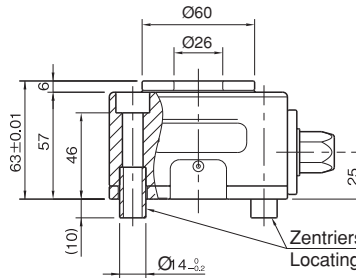


Referenz-Nr. Order No.	Spannkraft Clamping Force Kgf	Tork N-m	 (kg)
1477-00012	1200	40	2.3

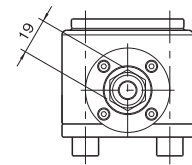
1477



Position Zentrierschraube
For M10 Cap Screws



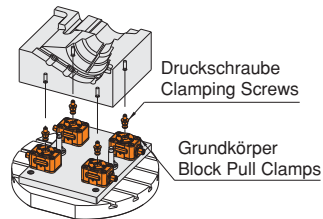
Zentrierstift (inkl.)
Locating Bushings (included)



1. Alle offenen Flächen des Werkstücks können bearbeitet werden.

1. Ideal for 5-Axis Machining

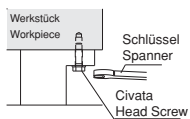
Block Pull Clamps mount under a workpiece making its surfaces to be machined fully open for the cutting tool. This allows completing multiple machining processes at a time.



2. Mit Blockziehen ist das Spannen leichter und praktischer als das Konventionelle.

2. Better Workability

Block Pull Clamps allow fastening a workpiece easily, unlike the conventional method of fastening with hexagon head screws from below.



Aktuelle Anwendung
Conventional Method

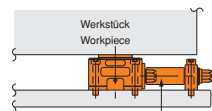


Anwendung mit Druckschraube
Application with pull stud

3. Bearbeitung mehrerer unterschiedlicher Werkstücke möglich

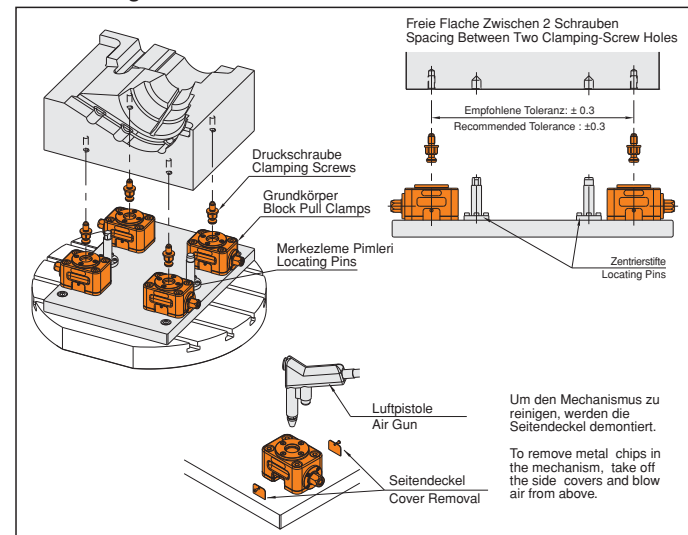
3. Actuated Remote-Control Units

If used in conjunction with Power-Tool Actuated Remote-Control Units, Block Pull Clamps can be installed at the best possible position under the workpiece.



Elektrowerkzeugbetätigte Fernbedieneinheit
Power-Tool Actuated Remote-Control Unit

Verwendung / How To Use



Um den Mechanismus zu reinigen, werden die Seitendeckel demontiert.

To remove metal chips in the mechanism, take off the side covers and blow air from above.