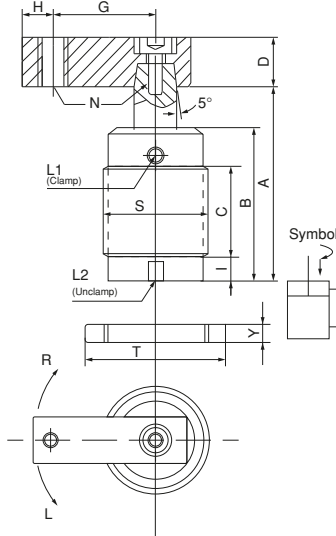


| Referans Nr. | Bağlama Tipi<br>Mounting Type | Bağlama Kolu<br>Clamping Arm | Max. Basınç<br>Max. Pressure | Normal Basınç<br>Normal Pres. | Hareket Tipi<br>Acting Type    | Dönme Açısı<br>Swivel Angle  | Dönme Strok<br>Swivel Stroke (mm) | Bağlama Strok<br>Clamp. Str. (mm) | Delik Çapı / Bore<br>Diameter Ø (mm) | Piston Çubuğu<br>Piston Rod Ø | Bağl. Gücü/Clamp<br>Force (25kg/cm <sup>2</sup> ) | A (mm) Sökme<br>Unclamp | B (mm) | C (mm) | D (mm)    | G (mm) | H (mm) | I (mm) | L1 Bağlama / Clamp<br>L2 Sökme / Unclamp | N (mm)      | S (mm)      | T (mm) Kontra Sim. 2.ad.<br>T (mm) 2 pcs/set | Y (mm) | Ağırlık<br>Weight (kg) |
|--------------|-------------------------------|------------------------------|------------------------------|-------------------------------|--------------------------------|------------------------------|-----------------------------------|-----------------------------------|--------------------------------------|-------------------------------|---|-------------------------|--------|--------|-----------|--------|--------|--------|--|-------------|-------------|--|--------|------------------------|
| 1047-NHTS025 | Dişli Gövde / Threaded Body   | Tek Kol / Single Arm         | 70 kg/cm <sup>2</sup>        | 20-45 kg/cm <sup>2</sup>      | Çift Hareketli / Double Acting | 90° (0°-45°, 60°, 180°) ± 2° | 12                                | 14                                | 25                                   | 18                            | 59  | 100                     | 70     | 35     | □<br>25.4 | 50     | 10     | 9      | 1/8<br>PF                                | M10<br>x1.5 | M45<br>x1.5 | Ø<br>65                                      | 10     | 0.8                    |
| 1047-NHTS032 |                               |                              |                              |                               |                                |                              | 14                                | 15                                | 32                                   | 20                            | 125   | 111                     | 76     | 45     | □<br>25.4 | 55     | 10     | 9      | 1/8<br>PF                                | M10<br>x1.5 | M50<br>x1.5 | Ø<br>70                                      | 11     | 1.1                    |
| 1047-NHTS040 |                               |                              |                              |                               |                                |                              | 14                                | 15                                | 40                                   | 20                            | 200   | 113.6                   | 80     | 45     | □<br>25.4 | 55     | 10     | 9      | 1/8<br>PF                                | M10<br>x1.5 | M55<br>x1.5 | Ø<br>75                                      | 11     | 1.25                   |
| 1047-NHTS050 |                               |                              |                              |                               |                                |                              | 14                                | 14                                | 50                                   | 20                            | 400   | 120                     | 87     | 50     | □<br>25.4 | 55     | 10     | 9      | 1/8<br>PF                                | M10<br>x1.5 | M65<br>x1.5 | Ø<br>85                                      | 12     | 1.7                    |



### Ürün Nr. 1047 Hidrolik Dönmeli Bağlama Product Nr. 1047 Hydraulic Swing Clamp

NHTS – Dişli Uyarlama, Tek Kol  
Borulu

NHTS – Threaded Version, Single Arm  
With Pipe

- Satın almadan önce hareket tipini ve dönme açısını bildiriniz.
- Before buying please, movement indicate the type and rotation angle.

