

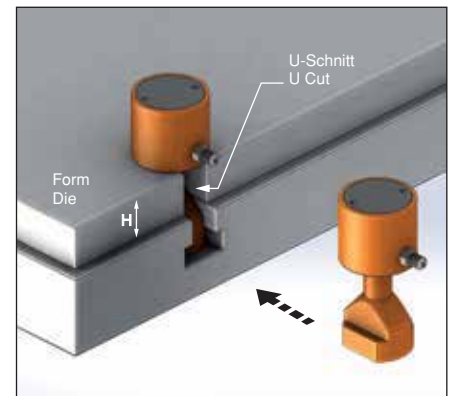
Modell / Model		CA-1	CA-2	CA-4	CA-6	CA-10	CA-16	CA-25
Spannkapazität Capacity of clamp	Ton	1	2	4	6	10	16	25
Total-Hub (X) Total stroke (X)	mm	6	8	8	8	8	8	8
Spannhub (Y) Stroke of clamp (Y)	mm	3	4	4	4	4	4	4
Schonhub (Z) Preserved stroke (Z)	mm	3	4	4	4	4	4	4
Zylinder-Gesamtvolumen Total volumn of cylinder	cc	3	7	13	21	32	54	76
Toleranzen Werkzeugunterteil-Dicke (H) The tolerance of the template thickness (H)	mm	±1.5	±2	±2	±2	±2	±2	±2

Hydraulischer Druck / Hydraulic pressure : 250kgf/cm²

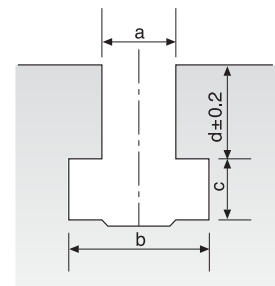
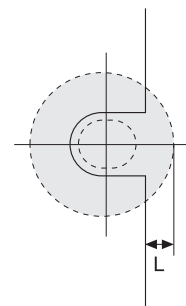
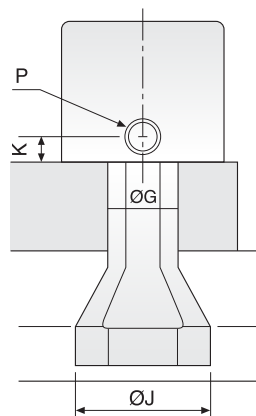
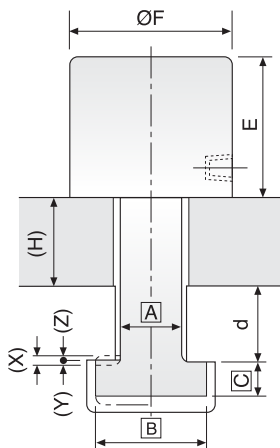


- Bei Bestellung bitte T-Nut-Größe (a,b,c,d) und Werkzeugunterteil-Dicke (H) angeben.
- Please indicate the size of T-slot (a,b,c,d) and the thickness (H) of the template for the die when purchasing.

Referenz-Nr. Order No.	ØF	E	ØG	ØJ	H+d max.	L max.	a min.	K	P
1010-CA01	44	48	12	30	60	12	8	9.5	PT1/8
1010-CA02	53	52	16	48	80	17	12	12	PT1/8
1010-CA04	65	58	23	58	90	20	16	15	PT1/4
1010-CA06	82	65	30	64	100	25	18	15	PT1/4
1010-CA10	99	71	38	78	110	30	22	15	PT1/4
1010-CA16	126	82	45	88	120	38	28	17	PT1/4
1010-CA25	150	100	55	98	140	45	36	23	PT1/4



- 1010**
- Spannmaße A, B und C werden in T-Nut gespannt festgelegt.
 - Wenn Spannmaß (H+d) höher als obige Werte ist, wird dies als Sonderkonstruktion bewertet.
 - Temperatur Standard : 60°
 - Temperatur Optional : 160°
- 1010**
- The sizes of clamps (A),(B) and (C) are made based on the size of T slot.
 - If the thickness of clamp (H+d) is more than the max. value listed on the left, it will be regarded as special pattern.
 - Standard Temperature : 60°
 - Optional Temperature : 160°



L: Länge Schablone zum Spannen
L: Template's length for clamp