

Werkzeug-Schnellwechselsystem

Quick Mold Change System



Werkzeug-Schnellwechselsystem
(Spritzguss)

QUICK MOLD CHANGE SYSTEM
(INJECTION)

Werkzeug-Schnellwechselsystem
(Pressen)

QUICK DIE CHANGE SYSTEM
(PRESS)



Werkzeug-Schnellwechselsystem

Wenn Werkzeuge schneller gewechselt werden müssen, weil es verschiedene Anfragen und weniger Stückzahlen gibt, ist es Zeit auf das schnelle Schnellwechselsystem zu wechseln.

Quick Die Change System

It's an era for making high frequency of die changing with multiple patterns and small quantity. In order to save die changing time and ensure operational safety, it is just in time to apply Quick Die Change System.

Anwendung

- Pressen und hydraulische - Spritzguss
- unterschiedliche automatische Maschinen

Application

- Press - hydraulic press - injection
- Different automatic machine clamp system

Elektronische Bediensäule Electronic Control Operation Panel

- mit Verriegelungssteuerung ausgestattet.
- It is equipped with interlock control switch for connecting to the machine.
- mit Sicherheitschalter zur Vermeidung von Betriebsfehler.
- It is designed with safety control device which prevents any operation error.
- Anwendung Programmsteuerung vorhanden
- PLC Uygulama mevcuttur.

Werkzeugheber / Die Lifter

Modell / Model: DL - DB - DLS - DBS

- Hydraulisch oder gefedert.
- Hydraulijc type, spring type.
- Befestigung in T-Nur oder U-Nut.
- Install in the T-slot or U-slot.



Werkzeugschiebearm / Die Arm

Modell / Model: RC - RD - RE/RF - RS - RSM

- auf Maschinentisch leicht schiebbar.
- Can pull out and push in the die from the plate easily.
- 4 unterschiedlich Werkzeugarm – Modelle,
- There are 4 different models of die arm.

Hydraulische Luftdruck-Pumpeneinheit Air Driven Hydraulic Pump Unit

- Geeignet für die Druckprüfung und Verriegelung mit Maschinen.
- Capable of pressure inspection and interlocking with machines.
- Die Bewegungen zwischen den einzelnen Geräten werden gegenseitig festgelegt, um die Betriebssicherheit zu gewährleisten.
- The movements between each devices will be pinned down mutually in order to ensure operational safety.

Werkzeugspanner / Die Clamp

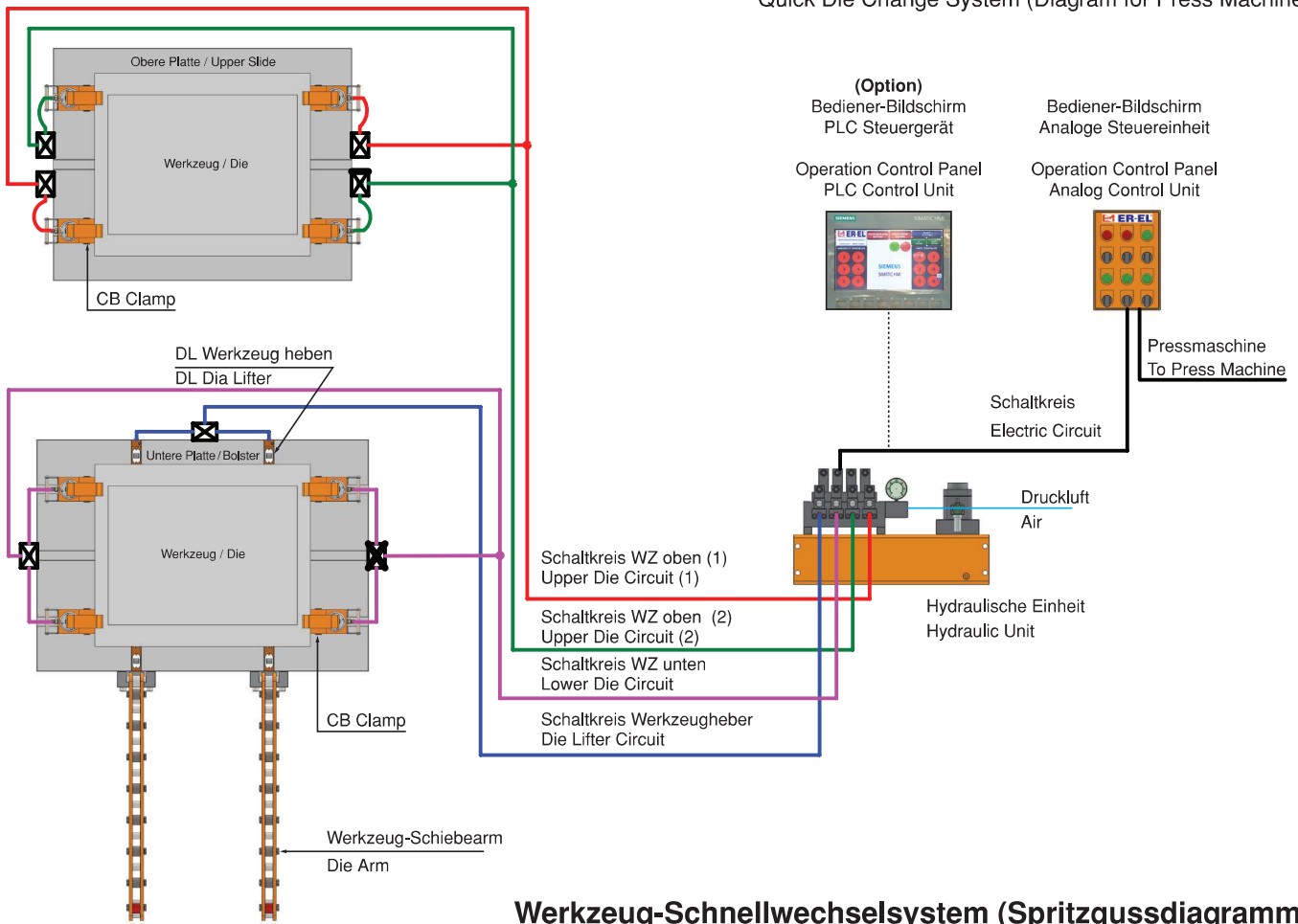
Modell / Model : CA - CAS - CV - CC - CB - CBS - CD

- ersetzt konventionelle Methoden.
- Replacing the traditional method which uses screws to fix dies.
- Einsatz bei Maschinen mit T-Nut-Tisch.
- Using T-slots to lock or fix directly on the plate.



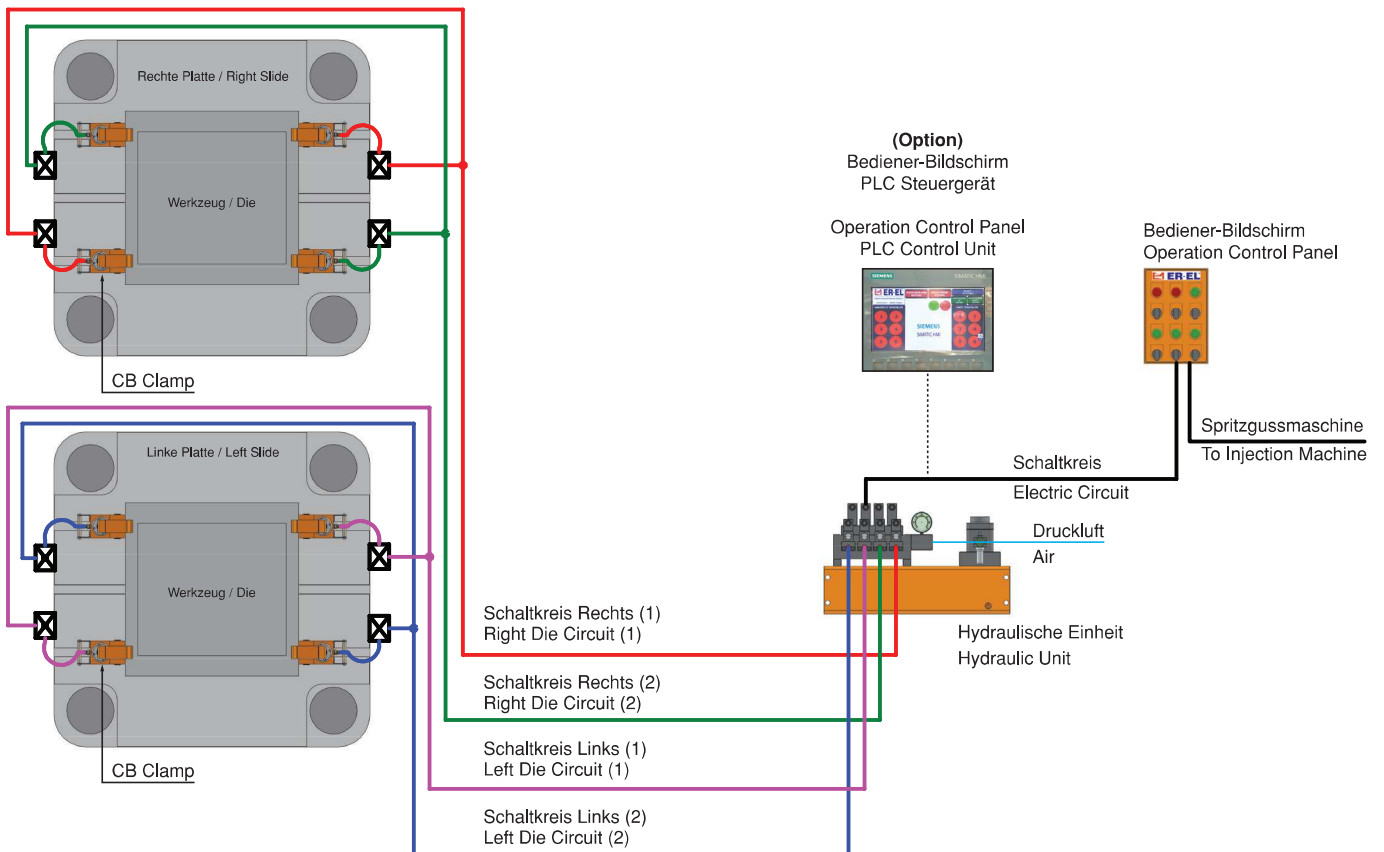
Werkzeug-Schnellwechselsystem (Pressendiagramm)

Quick Die Change System (Diagram for Press Machine)



Werkzeug-Schnellwechselsystem (Spritzgussdiagramm)

Quick Mold Change System (Diagram for Injection Machine)

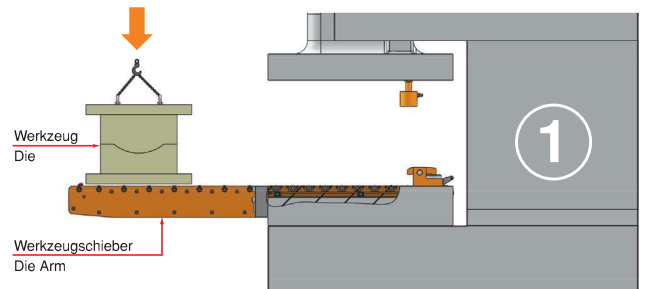


Einlegen des Werkzeugs

Beladen Sie das Werkzeug mit einem Kran oder Gabelstapler.
Die Werkzeugschieber ermöglichen eine einfache Beladung.

Load the die

Load the die using a crane or forklift.
The pre-rollers enable easy loading.

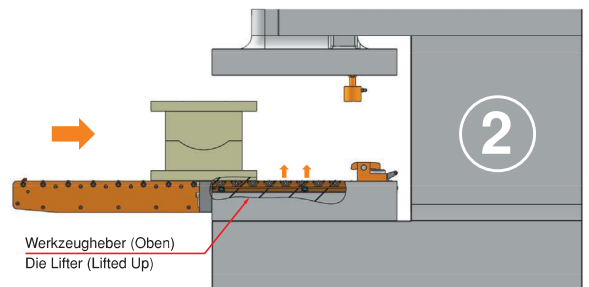


Schieben Sie das Werkzeug auf die untere Platte.

Durch den Werkzeugheber und Werkzeugschiebern ist zum Bewegen des Werkzeugs nur minimale Kraft erforderlich.
Die Werkzeugheber werden in den T- / U-Nuten eingebaut.
Werkzeugheber: Hydraulikdruck **ON**

Transfer the die to the bolster.

With the pre-rollers and die lifters, minimal force is required to move the die.
The lifters are set in the T- / U-slots.
Die Lifter : Hydraulic pressure **ON**

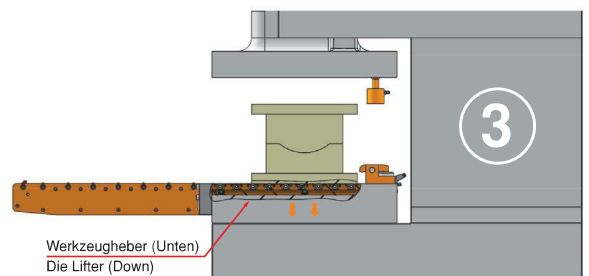


Setzen Sie das Werkzeug auf die Platte.

Bei Drucktastenbedienung wird der Werkzeugheber gesenkt und das Werkzeug berührt die Platte.
Werkzeugheber: Hydraulikdruck **OFF**

Set the die on the bolster.

With push-button operation, the die lifter releases and the die makes contact with the bolster.
Die Lifter : Hydraulic Pressure **OFF**

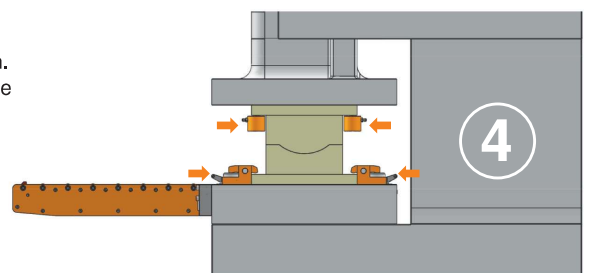


Platzieren Sie die hydraulischen Spannelemente .

Platzieren Sie die hydraulischen Spannelemente dem Werkzeug entsprechend ein.
Schieben Sie die hydraulischen Spannelemente in den T-Nuten und bringen Sie sie in die Nähe des Werkzeugs.
Hydraulische Spannelemente: Hydraulikdruck **OFF**

Set the automatic clamps.

Set the slide to the bottom dead center .
Slide automatic clamps on the T -slot and bring them near the die.
Hydraulic Clamp : Hydraulic Pressure **OFF**

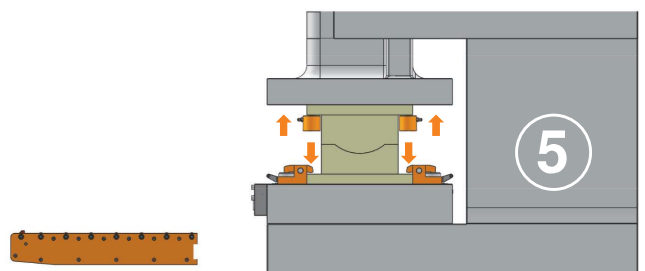


Spannen Sie das Werkzeug.

Bei Drucktastenbedienung werden die Spannelemente gespannt.
Nach der Sicherheitsüberprüfung kann der Werkzeugschieber entfernt werden.
Hydraulische Spannelemente: Hydraulikdruck **ON**

Lock the die.

With push-button operation, automatic clamps lock the die.
After safety confirmation, the pre-roller can be removed.
Hydraulic Clamp : Hydraulic Pressure **ON**



| Modell / Model | | CA-1 | CA-2 | CA-4 | CA-6 | CA-10 | CA-16 | CA-25 |
|--|-----|------|------|------|------|-------|-------|-------|
| Spannkapazität Capacity of clamp | Ton | 1 | 2 | 4 | 6 | 10 | 16 | 25 |
| Total-Hub (X) Total stroke (X) | mm | 6 | 8 | 8 | 8 | 8 | 8 | 8 |
| Spannhub (Y) Stroke of clamp (Y) | mm | 3 | 4 | 4 | 4 | 4 | 4 | 4 |
| Schonhub (Z) Preserved stroke (Z) | mm | 3 | 4 | 4 | 4 | 4 | 4 | 4 |
| Zylinder-Gesamtvolumen Total volumn of cylinder | cc | 3 | 7 | 13 | 21 | 32 | 54 | 76 |
| Toleranzen Werkzeugunerteil-Dicke (H) The tolerance of the template thickness (H) | mm | ±1,5 | ±2 | ±2 | ±2 | ±2 | ±2 | ±2 |

Hydraulischer Druck / Hydraulic pressure : 250kgf/cm²

| Referenz-Nr. Order No. | ØF | E | ØG | ØJ | H+d max. | L max. | a min. | K | P |
|---------------------------|-----|-----|----|----|-------------|-----------|-----------|-----|-------|
| 1010-CA01 | 44 | 48 | 12 | 30 | 60 | 12 | 8 | 9,5 | PT1/8 |
| 1010-CA02 | 53 | 52 | 16 | 48 | 80 | 17 | 12 | 12 | PT1/8 |
| 1010-CA04 | 65 | 58 | 23 | 58 | 90 | 20 | 16 | 15 | PT1/4 |
| 1010-CA06 | 82 | 65 | 30 | 64 | 100 | 25 | 18 | 15 | PT1/4 |
| 1010-CA10 | 99 | 71 | 38 | 78 | 110 | 30 | 22 | 15 | PT1/4 |
| 1010-CA16 | 126 | 82 | 45 | 88 | 120 | 38 | 28 | 17 | PT1/4 |
| 1010-CA25 | 150 | 100 | 55 | 98 | 140 | 45 | 36 | 23 | PT1/4 |

1010

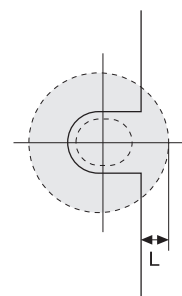
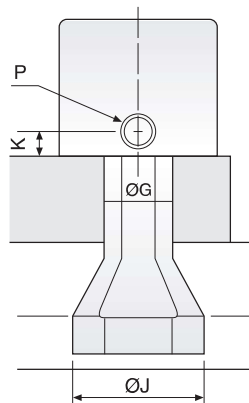
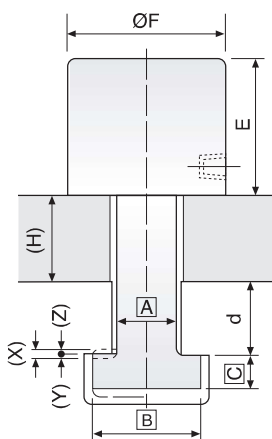
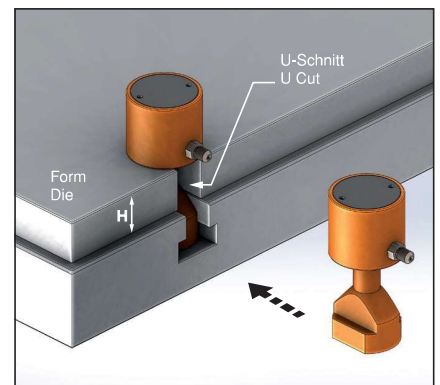
- Spannmaße A, B und C werden in T-Nut gespannt festgelegt.
- Wenn Spannmaß (H+d) höher als obige Werte ist, wird dies als Sonderkonstruktion bewertet.
- Temperatur Standard : 60°

1010

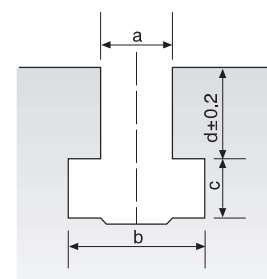
- The sizes of clamps (A),(B) and (C) are made based on the size of T slot.
- If the thickness of clamp (H+d) is more than the max. value listed on the left, it will be regarded as special pattern.
- Standard Temperature : 60°

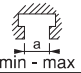


- Bei Bestellung bitte T-Nut-Größe (a,b,c,d) und Werkzeugunterteil-Dicke (H) angeben.
- Please indicate the size of T-slot (a,b,c,d) and the thickness (H) of the template for the die when purchasing.



L: Länge Schablone zum Spannen
L: Template's length for clamp



| Referenz-Nr. Order No. |  min - max | Spannkapazität Capacity of Clamp | Hubweg Traveling Stroke (S) | Hubgeschwindigkeit Traveling Speed m/sec. | X | Z | ØF | E |
|---------------------------|--|-------------------------------------|-----------------------------------|---|---|---|-----|----|
| 1010-CAS04 | 28 - 32 | 27 | - | 1 | 8 | 4 | 65 | 62 |
| 1010-CAS06 | 28 - 32 | 36 | - | 1 | 8 | 4 | 82 | 69 |
| 1010-CAS10 | 28 - 32 | 42 | - | 1 | 8 | 4 | 99 | 75 |
| 1010-CAS16 | 28 - 32 | 51 | - | 1 | 8 | 4 | 126 | 86 |

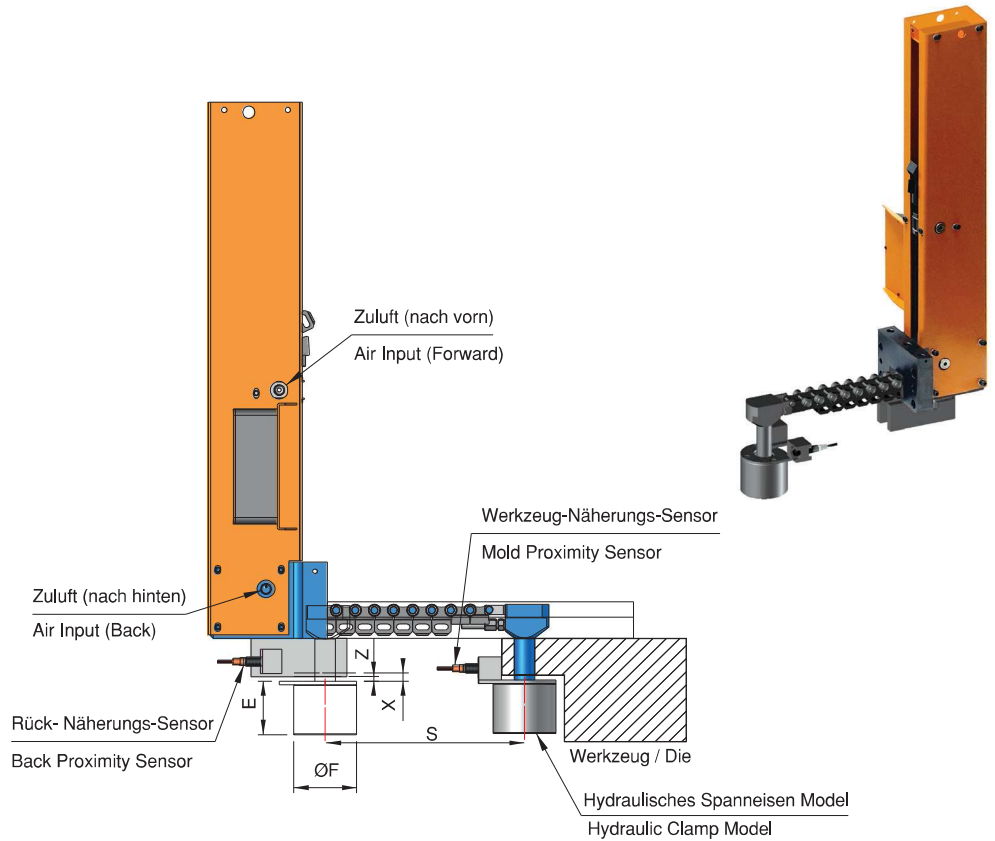
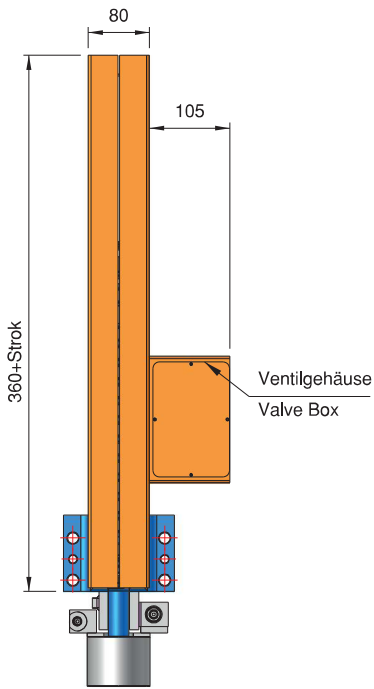


1010

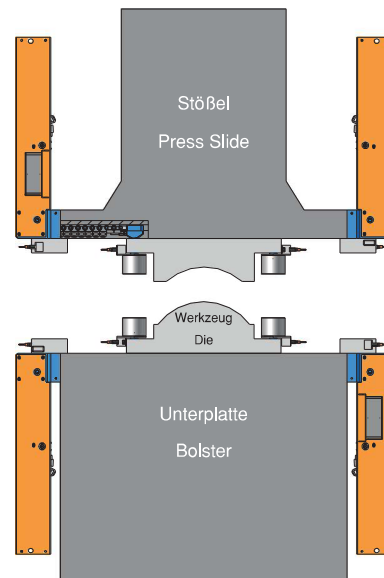
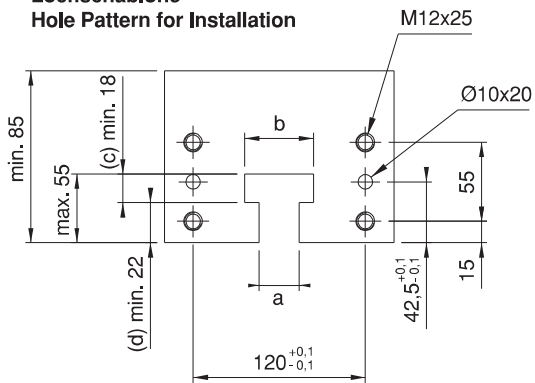
- Bei Bestellung den Hubweg nennen
- Hydraulische Spannkraft 250kgf/cm²
- Pneumatische Schiebekonsolle Luftdruck mMax. 10 bar

1010

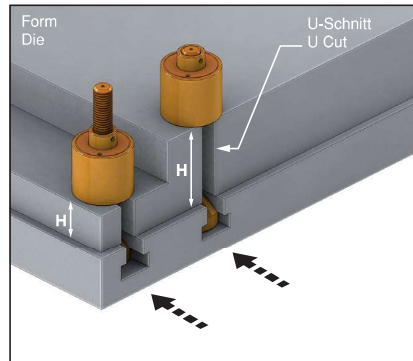
- Please inform the stroke distance before purchase
- Hydraulic clamp pressure 250kgf/cm
- Pneumatic Slide Console Air Bar Max.



Lochschiablone Hole Pattern for Installation



| Modell / Model | | CV-4 | CV-6 | CV-10 |
|--|-----|------|------|-------|
| Spannkapazität Capacity of clamp | Ton | 4 | 6 | 10 |
| Total-Hub (X) Total stroke (X) | mm | 8 | 8 | 8 |
| Spannhub (Y) Stroke of clamp (Y) | mm | 4 | 4 | 4 |
| Schonhub (Z) Preserved stroke (Z) | mm | 4 | 4 | 4 |
| Zylinder-Gesamtvolumen Total volumn of cylinder | cc | 13 | 21 | 32 |
| Toleranzen Werkzeugunerteil-Dicke (H) The tolerance of the template thickness (H) | mm | ±2 | ±2 | ±2 |



Hydraulischer Druck / Hydraulic pressure : 250kgf/cm²

| Referenz-Nr. Order No. | | A | B | C | D | E + K1 | Einstellidistanz adjust distance | F | Max. L | M | ØG | ØJ | K | P |
|---------------------------|----|------|----|----|-----|--------|-------------------------------------|----|--------|-----|----|----|----|--------|
| 1010-CV042020125 | 20 | 19.6 | 32 | 12 | 85 | 70 | 15 | 65 | 125 | M20 | 20 | 58 | 15 | PT 1/4 |
| 1010-CV042020160 | 20 | 19.6 | 32 | 12 | 110 | 70 | 40 | 65 | 160 | M20 | 20 | 58 | 15 | PT 1/4 |
| 1010-CV042022125 | 22 | 21.6 | 35 | 14 | 85 | 70 | 15 | 65 | 125 | M20 | 20 | 58 | 15 | PT 1/4 |
| 1010-CV042022160 | 22 | 21.6 | 35 | 14 | 110 | 70 | 40 | 65 | 160 | M20 | 20 | 58 | 15 | PT 1/4 |
| 1010-CV062424125 | 24 | 23.6 | 40 | 16 | 85 | 77 | 8 | 82 | 125 | M24 | 24 | 64 | 15 | PT 1/4 |
| 1010-CV062424160 | 24 | 23.6 | 40 | 16 | 110 | 77 | 33 | 82 | 160 | M24 | 24 | 64 | 15 | PT 1/4 |
| 1010-CV062428125 | 28 | 27.6 | 44 | 18 | 85 | 77 | 8 | 82 | 125 | M24 | 24 | 64 | 15 | PT 1/4 |
| 1010-CV062428160 | 28 | 27.6 | 44 | 18 | 110 | 77 | 33 | 82 | 160 | M24 | 24 | 64 | 15 | PT 1/4 |
| 1010-CV102727160 | 27 | 26.6 | 46 | 18 | 110 | 83 | 27 | 99 | 160 | M27 | 27 | 78 | 15 | PT 1/4 |
| 1010-CV102727200 | 27 | 26.6 | 46 | 18 | 125 | 83 | 42 | 99 | 200 | M27 | 27 | 78 | 15 | PT 1/4 |
| 1010-CV102732160 | 32 | 31.6 | 50 | 20 | 110 | 83 | 27 | 99 | 160 | M27 | 27 | 78 | 15 | PT 1/4 |
| 1010-CV102732200 | 32 | 31.6 | 50 | 20 | 125 | 83 | 42 | 99 | 200 | M27 | 27 | 78 | 15 | PT 1/4 |
| 1010-CV103036160 | 36 | 35.6 | 56 | 23 | 110 | 83 | 27 | 99 | 160 | M30 | 30 | 88 | 15 | PT 1/4 |
| 1010-CV103036200 | 36 | 35.6 | 56 | 23 | 135 | 83 | 52 | 99 | 200 | M30 | 30 | 88 | 15 | PT 1/4 |
| 1010-CV103036250 | 36 | 35.6 | 56 | 23 | 150 | 83 | 67 | 99 | 250 | M30 | 30 | 88 | 15 | PT 1/4 |

1010

- Schraubenabstandseinstellung kann vorgenommen werden.
- Temperatur Standard : 60°

1010

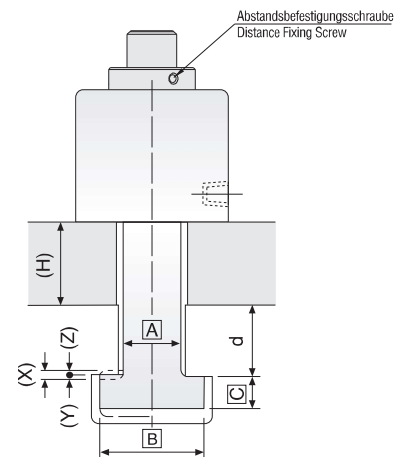
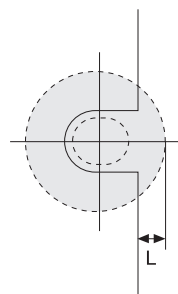
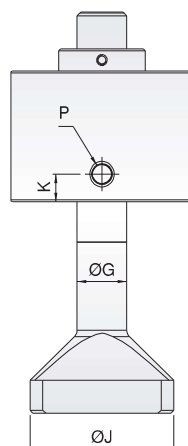
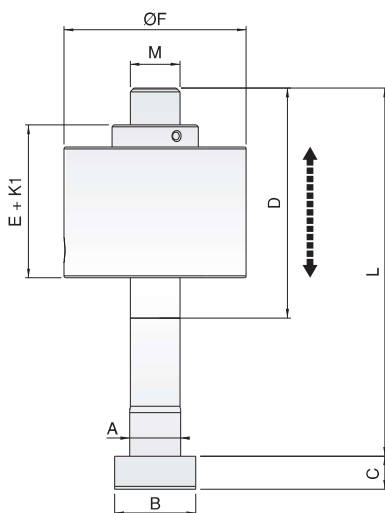
- Screw-distance adjustment can be made.
- Standard Temperature : 60°

Hinweis

Der eingestellte Hub (Z) muss bei einer Änderung der Einstellungen kontrolliert werden.

Notes

The set stroke (Z) must be checked when changing the settings.



| Modell / Model | | CC-1 | CC-2 | CC-4 | CC-6 | CC-10 |
|--|-----|------|------|------|------|-------|
| Spannkapazität Capacity of clamp | Ton | 1 | 2 | 4 | 6 | 10 |
| Total-Hub (X) Total stroke (X) | mm | 9 | 9 | 9 | 12 | 12 |
| Spannhub (Y) Stroke of clamp (Y) | mm | 4 | 4 | 4 | 4 | 4 |
| Schonhub (Z) Preserved stroke (Z) | mm | 5 | 5 | 5 | 8 | 8 |
| Zylinder-Gesamtvolumen Total volumn of cylinder | cc | 3 | 7.5 | 13 | 21 | 38 |
| Toleranzen Werkzeugunerteil-Dicke (H) The tolerance of the template thickness (H) | mm | ±1.5 | ±2 | ±2 | ±2 | ±2 |



- Bei Bestellung bitte T-Nut-Größe (a,b,c,d) und Werkzeugunerteil-Dicke (H) angeben.
- Please indicate the size of T-slot (a,b,c,d) and the thickness (H) of the template for the die when purchasing.

Hydraulischer Druck / Hydraulic pressure : 250kgf/cm²

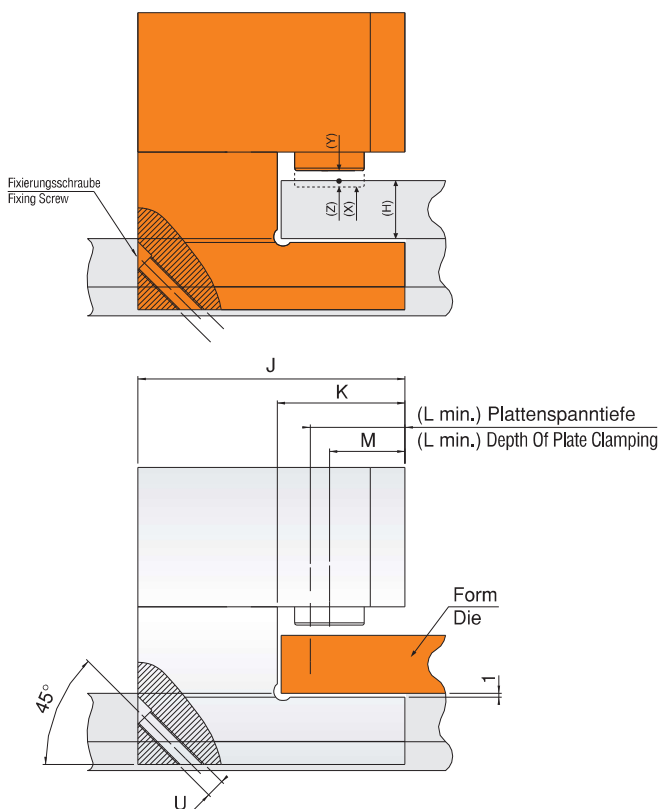
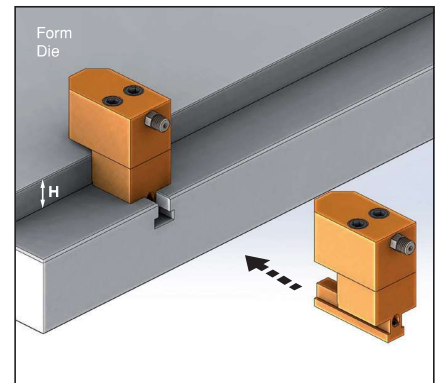
| Referenz-Nr. Order No. | H min. - max | A min. | C min. | E | F | G | I | J | K | L min. | M | T | U |
|---------------------------|-----------------|-----------|-----------|-----|------|------|-------|-----|----|-----------|------|-----|-----|
| 1015-CC01 | 20-35 | 10 | 6.5 | 43 | G+43 | H+9 | Ø16 | 75 | 33 | 27 | 21.5 | 1/8 | M5 |
| 1015-CC02 | 25-40 | 14 | 10 | 50 | G+50 | H+9 | Ø18 | 91 | 43 | 30 | 25 | 1/8 | M5 |
| 1015-CC04 | 25-40 | 18 | 12 | 65 | G+60 | H+9 | Ø30 | 115 | 55 | 40 | 32.5 | 1/8 | M8 |
| 1015-CC06 | 35-55 | 22 | 14 | 80 | G+65 | H+12 | Ø37.5 | 130 | 65 | 48 | 40 | 1/4 | M10 |
| 1015-CC10 | 40-60 | 24 | 16 | 100 | G+82 | H+12 | Ø50 | 160 | 85 | 60 | 49 | 1/4 | M12 |

1015

- Spannmaße A, B C und D werden in T-Nut gespannt festgelegt.
- Temperatur Standard : 60°

1015

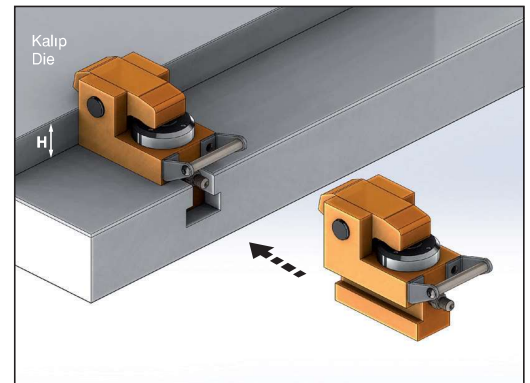
- The sizes of clamps(A),(B),(C) and (D) are made based on the size of T-slot.
- Standard Temperature : 60°



| Referenz-Nr. Order No. | L | K | J | H min. | H+d min. max | E min. | F | G | a min. | C min. | P |
|---------------------------|------|-----|------|-----------|-----------------|-----------|-----|----|-----------|-----------|-------|
| 1015-CB01 | 74.5 | 60 | 14.5 | 25 | 100 | 42 | 44 | 20 | 10 | 6.5 | PT1/8 |
| 1015-CB02 | 110 | 90 | 20 | 25 | 100 | 73 | 68 | 32 | 14 | 10 | PT1/4 |
| 1015-CB04 | 134 | 110 | 24 | 25 | 130 | 77 | 79 | 40 | 18 | 12 | PT1/4 |
| 1015-CB06 | 159 | 130 | 29 | 30 | 150 | 92 | 96 | 46 | 22 | 14 | PT1/4 |
| 1015-CB10 | 189 | 159 | 30 | 40 | 140 | 114 | 117 | 54 | 24 | 16 | PT1/4 |
| 1015-CB16 | 230 | 200 | 30 | 40 | 130 | 126 | 129 | 58 | 28 | 20 | PT1/4 |
| 1015-CB25 | 265 | 235 | 30 | 45 | 120 | 148 | 156 | 70 | 36 | 23 | PT1/4 |



| Modell / Model | CB-1 | CB-2 | CB-4 | CB-6 | CB-10 | CB-16 | CB-25 |
|---|-------|-------|-------|-------|--------|--------|--------|
| | CBL-1 | CBL-2 | CBL-4 | CBL-6 | CBL-10 | CBL-16 | CBL-25 |
| Spannkapazität Capacity of clamp | 1 | 2 | 4 | 6 | 10 | 16 | 25 |
| Total-Hub (X) Total stroke (X) | 6 | 8 | 8 | 8 | 8 | 8 | 8 |
| Spannhub (Y) Stroke of clamp (Y) | 2.5 | 3 | 3 | 3 | 3 | 3 | 3 |
| Schonhub (Z) Preserved stroke (Z) | 3.5 | 5 | 5 | 5 | 5 | 5 | 5 |
| Zylinder-Gesamtvolumen Total volumn of cylinder | 3 | 7.5 | 13 | 21 | 38 | 55 | 98 |
| Toleranzen Werkzeugunterteil-Dicke (H) The tolerance of the template thickness (H) | ±1.5 | ±2 | ±2 | ±2 | ±2 | ±2 | ±2 |



1015

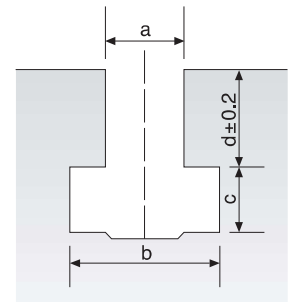
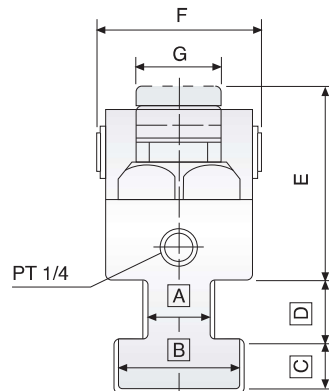
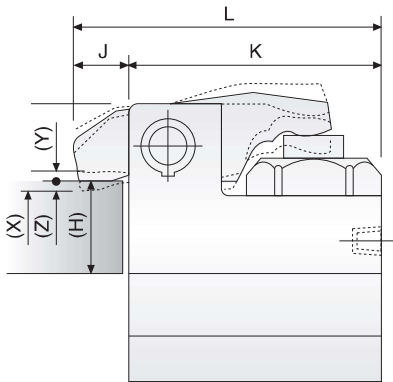
- Spannmaße A, B C und D werden in T-Nut gespannt festgelegt.
- Temperatur Standard : 60°
- Hidrolischer Druck 250kgf/cm²

1015

- The sizes of clamps(A),(B),(C) and (D) are made based on the size of T-slot.
- Standard Temperature : 60°
- Hydraulic pressure : 250kgf/cm²

- Bei Bestellung bitte T-Nut-Größe (a,b,c,d) und Werkzeugunterteil-Dicke (H) angeben.

- Please indicate the size of T-slot (a,b,c,d) and the thickness (H) of the template for the die when purchasing.



| Referenz-Nr. Order No. | L | K | J | H min. | H+d min. max | E min. | F | G | a min. | C min. | P |
|---------------------------|------|-----|------|-----------|-----------------|-----------|-----|----|-----------|-----------|-------|
| 1015-CBL01 | 74.5 | 60 | 14.5 | 25 | 100 | 42 | 44 | 20 | 10 | 6.5 | PT1/8 |
| 1015-CBL02 | 110 | 90 | 20 | 25 | 100 | 73 | 68 | 32 | 14 | 10 | PT1/4 |
| 1015-CBL04 | 134 | 110 | 24 | 25 | 130 | 77 | 79 | 40 | 18 | 12 | PT1/4 |
| 1015-CBL06 | 159 | 130 | 29 | 30 | 150 | 92 | 96 | 46 | 22 | 14 | PT1/4 |
| 1015-CBL10 | 189 | 159 | 30 | 40 | 140 | 114 | 117 | 54 | 24 | 16 | PT1/4 |
| 1015-CBL16 | 230 | 200 | 30 | 40 | 130 | 126 | 129 | 58 | 28 | 20 | PT1/4 |
| 1015-CBL25 | 265 | 235 | 30 | 45 | 120 | 148 | 156 | 70 | 36 | 23 | PT1/4 |

Hydraulik-Spann-Modell CBL

Hydraulic Clamp Model CBL



1015

- Vorrichtungsmße (A),(B),(C) und (D) werden im Zustand gespannt T-Nut bestimmt.
- Standard-Temperatur : 60°
- Hydraulischer Druck : 250kgf/cm²

1015

- The sizes of clamps(A),(B),(C) and (D) are made based on the size of T-slot.
- Standard Temperature : 60°
- Hydraulic pressure : 250kgf/cm²

- Hinweis mit Verriegelungsoption

- Note With locking option

| Modell / Model | | CBS-1 | CBS-2 | CBS-4 | CBS-6 | CBS-10 | CBS-16 | CBS-25 |
|--|-----|-------|-------|-------|-------|--------|--------|--------|
| Spannkapazität Capacity of clamp | Ton | 1 | 2 | 4 | 6 | 10 | 16 | 25 |
| Total-Hub (X) Total stroke (X) | mm | 6 | 8 | 8 | 8 | 8 | 8 | 8 |
| Spannhub (Y) Stroke of clamp (Y) | mm | 2.5 | 3 | 3 | 3 | 3 | 3 | 3 |
| Schonhub (Z) Preserved stroke (Z) | mm | 3.5 | 5 | 5 | 5 | 5 | 5 | 5 |
| Zylinder-Gesamtvolumen Total volumn of cylinder | cc | 3 | 7.5 | 13 | 21 | 38 | 55 | 98 |
| Toleranzen Werkzeugunterteil-Dicke(H) The tolerance of the template thickness (H) | mm | ±1.5 | ±2 | ±2 | ±2 | ±2 | ±2 | ±2 |
| Hubweg (S) Traveling Stroke (S) | | | | | | | | |

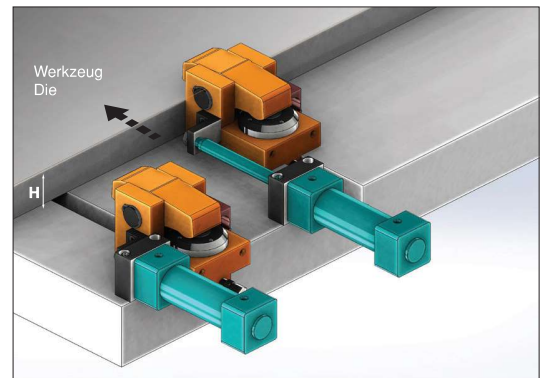


- Bei Bestellung Maße T-Nut (a,b,c,d) und Dicke Werkzeugschablone (H) nennen
- Please indicate the size of T-slot (a,b,c,d) and the thickness (H) of the template for the die when purchasing.

Bei Bestellung den Hubweg nennen
Hydraulischer Druck : 250kgf/cm²

Please inform the stroke distance before purchase.
Hydraulic pressure : 250kgf/cm²

| Referenz-Nr. Order No. | L | K | J | H min. | H+d min. max | E min. | F | G | a min. | C min. | P |
|---------------------------|------|-----|------|--------|--------------|--------|-----|----|--------|--------|-------|
| 1015-CBS01 | 74.5 | 60 | 14.5 | 25 | 100 | 42 | 44 | 20 | 10 | 6.5 | PT1/8 |
| 1015-CBS02 | 110 | 90 | 20 | 25 | 100 | 73 | 68 | 32 | 14 | 10 | PT1/4 |
| 1015-CBS04 | 134 | 110 | 24 | 25 | 130 | 77 | 79 | 40 | 18 | 12 | PT1/4 |
| 1015-CBS06 | 159 | 130 | 29 | 30 | 150 | 92 | 96 | 46 | 22 | 14 | PT1/4 |
| 1015-CBS10 | 189 | 159 | 30 | 40 | 140 | 114 | 117 | 54 | 24 | 16 | PT1/4 |
| 1015-CBS16 | 230 | 200 | 30 | 40 | 130 | 126 | 129 | 58 | 28 | 20 | PT1/4 |
| 1015-CBS25 | 265 | 235 | 30 | 45 | 120 | 148 | 156 | 70 | 36 | 23 | PT1/4 |



1015

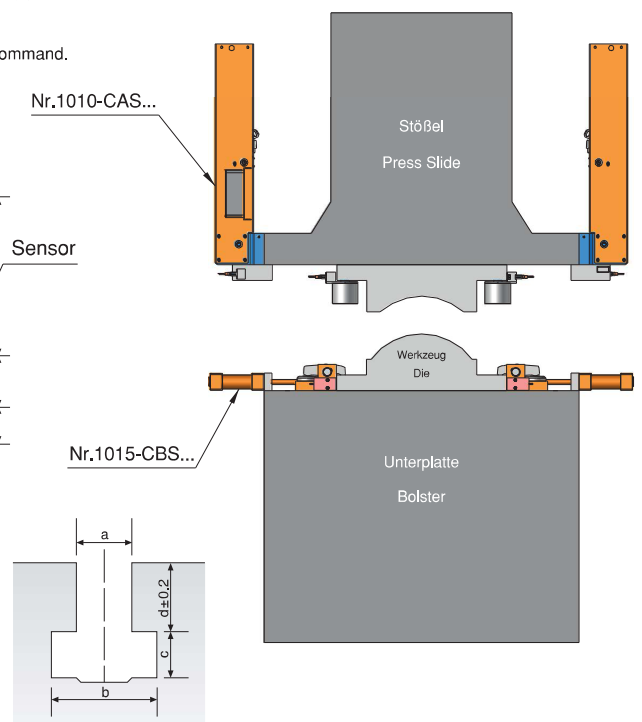
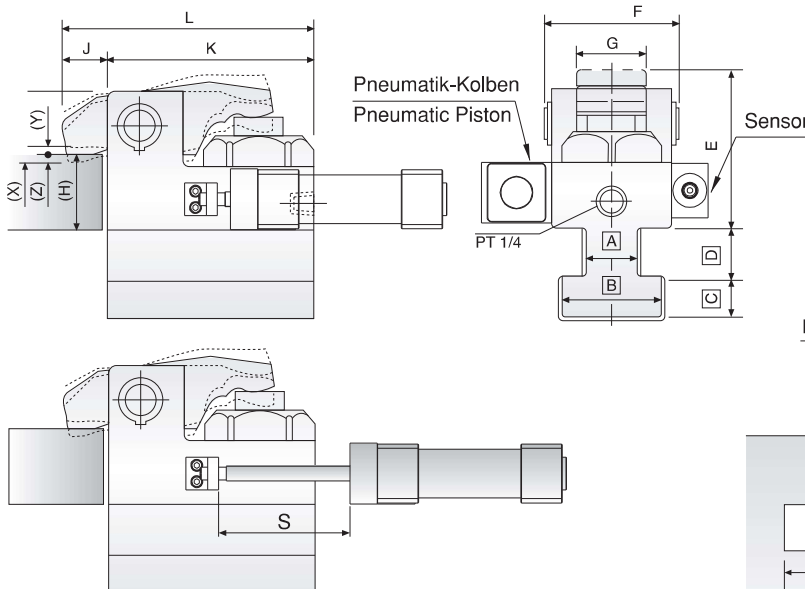
- Vorrichtungsmaße (A),(B),(C) und (D) werden im Zustand gespannt T-Nut bestimmt.
- Standard-Temperatur : 60°

1015

- The sizes of clamps(A),(B),(C) and (D) are made based on the size of T-slot.
- Standard Temperature : 60°

Hinweis
Bewegung durch automatischen Befehl

Note
Proceeds with automatic command.





| Modell / Model | | CD-2 | CD-4 | CD-6 | CD-10 | CD-16 | CD-25 |
|--|-----|------|------|------|-------|-------|-------|
| Spannkapazität Capacity of clamp | Ton | 2 | 4 | 6 | 10 | 16 | 25 |
| Total-Hub (X) Total stroke (X) | mm | 8 | 8 | 8 | 8 | 8 | 8 |
| Spannhub (Y) Stroke of clamp (Y) | mm | 3 | 3 | 3 | 3 | 3 | 3 |
| Schonhub (Z) Preserved stroke (Z) | mm | 5 | 5 | 5 | 5 | 5 | 5 |
| Zylinder-Gesamtvolumen Total volumn of cylinder | cc | 7.5 | 13 | 21 | 38 | 55 | 98 |
| Toleranzen Werkzeugunerteil-Dicke (H) The tolerance of the template thickness (H) | mm | ±2 | ±2 | ±2 | ±2 | ±2 | ±2 |

Hydraulischer Druck / Hydraulic pressure : 250kgf/cm²

| Referenz-Nr. Order No. | A | B | C | D | E min. | F | G | W | N max. | T |
|---------------------------|----|----|-----|-----|-----------|-----|----|-----|-----------|---------|
| 1015-CD02 | 12 | 20 | 80 | 98 | 90 | 76 | 30 | 124 | 25 | M10x20D |
| 1015-CD04 | 12 | 25 | 100 | 109 | 93 | 87 | 30 | 135 | 30 | M12x24D |
| 1015-CD06 | 15 | 30 | 120 | 126 | 109 | 104 | 30 | 152 | 35 | M12x24D |
| 1015-CD10 | 15 | 35 | 150 | 148 | 131 | 124 | 36 | 174 | 40 | M14x28D |
| 1015-CD16 | 20 | 40 | 200 | 166 | 142 | 138 | 44 | 200 | 50 | M18x36D |
| 1015-CD25 | 20 | 45 | 235 | 200 | 163 | 168 | 48 | 240 | 60 | M22x45D |

1015

- Temperatur Standard : 60°

1015

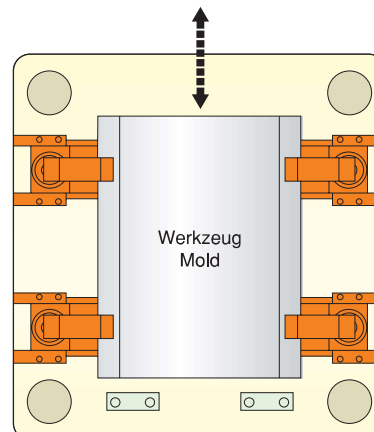
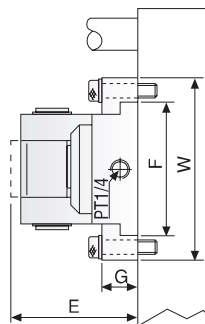
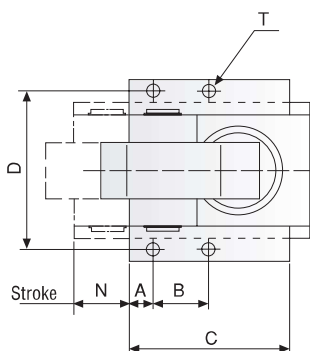
- Standard Temperature : 60°

Hinweis

Anwendung bei Maschinenplatten mit Bohrungen möglich

Note

It can be used in machines with holes on the plate.



| Modell / Model | | CG-4 | CG-6 | CG-10 | CG-16 | CG-25 | CG-50 |
|--------------------------------------|-----|------|------|-------|-------|-------|-------|
| Spannkapazität Capacity of clamp | Ton | 4 | 6 | 10 | 16 | 25 | 50 |
| Haltekraft Retaining force | Ton | 0.80 | 1.2 | 2 | 3.2 | 5 | 10 |
| Schonhub (Z) Preserved stroke (Z) | mm | 1.5 | 1.5 | 2 | 2 | 2 | 2 |



Hydraulischer Druck / Hydraulic pressure : 250kgf/cm²

- Bei der Bestellung bitte die Werkzeughöhe (H) bekanntge
- Please thickness (H) of the template for the die when purchasing.

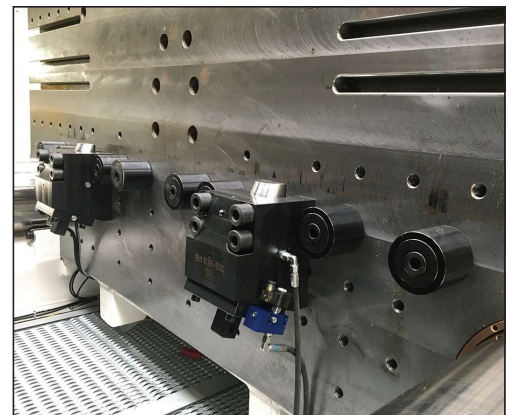
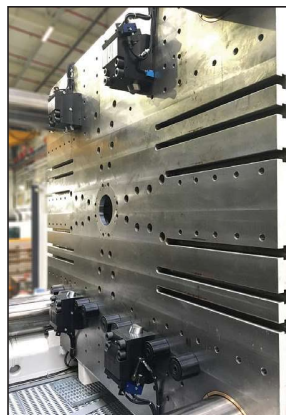
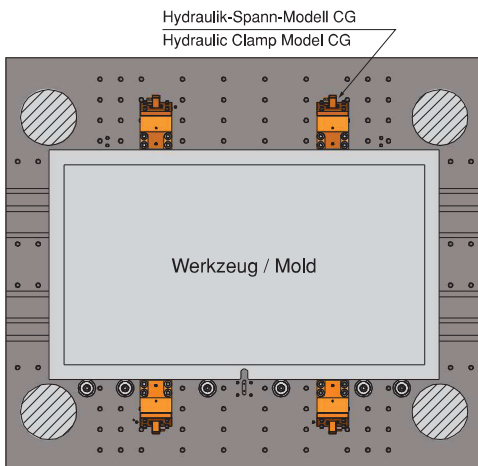
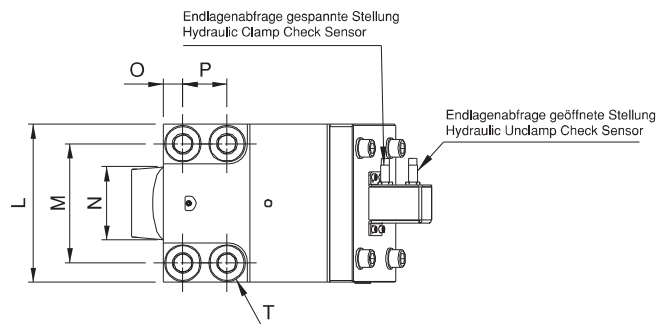
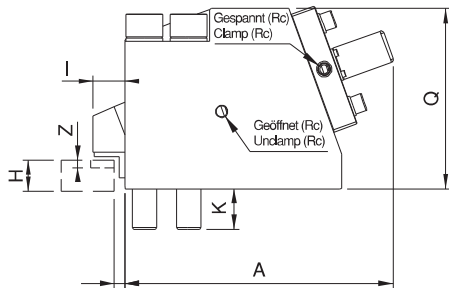
| Referenz-Nr. Order No. | I | J | K | L | M | N | O | P | Q | Rc | H | T |
|---------------------------|----|---|----|-----|-----|-----|----|----|-----|-----|----|-----|
| 1015-CG04 | 17 | 2 | 27 | 90 | 62 | 35 | 14 | - | 115 | 1/4 | 25 | M16 |
| 1015-CG06 | 19 | 3 | 33 | 110 | 76 | 45 | 17 | - | 124 | 1/4 | 30 | M20 |
| 1015-CG10 | 23 | 3 | 36 | 135 | 95 | 50 | 20 | - | 131 | 1/4 | 30 | M24 |
| 1015-CG16 | 28 | 5 | 33 | 138 | 104 | 60 | 17 | 40 | 156 | 1/4 | 30 | M20 |
| 1015-CG25 | 33 | 5 | 40 | 170 | 130 | 75 | 20 | 50 | 188 | 1/4 | 40 | M24 |
| 1015-CG50 | 35 | 5 | 50 | 215 | 162 | 100 | 27 | 60 | 227 | 3/8 | 50 | M33 |

1015

- Temperatur Standard : 60°

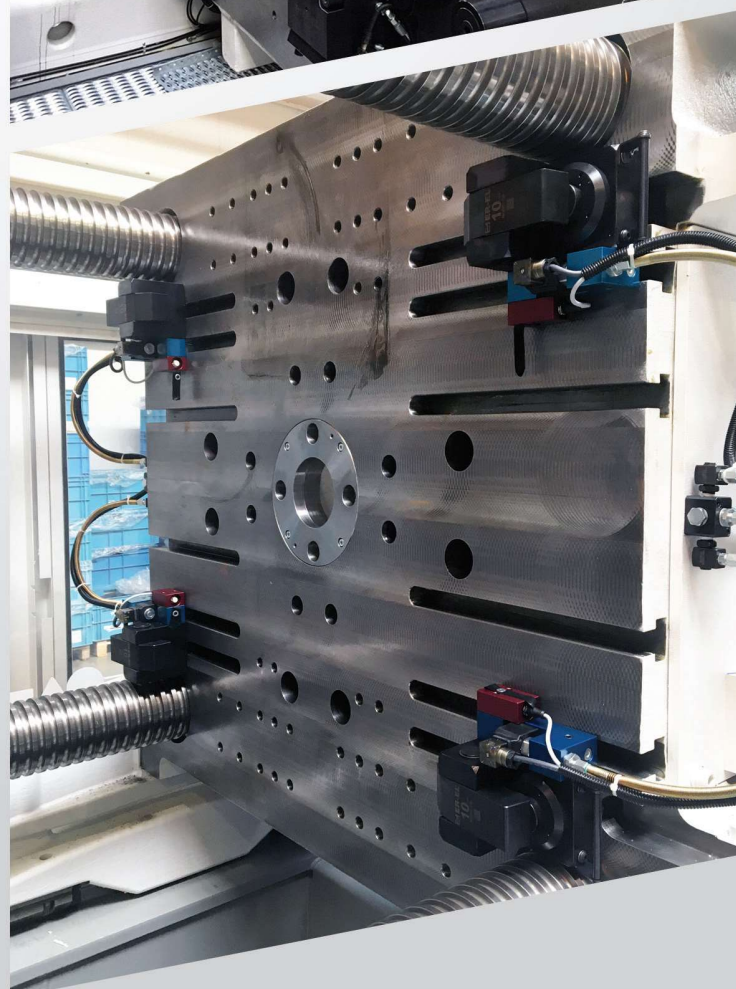
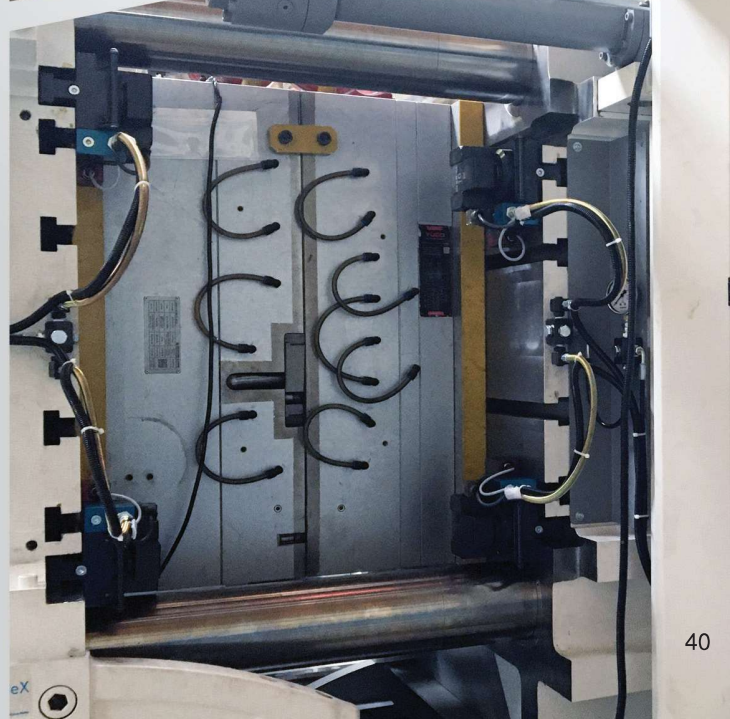
1015

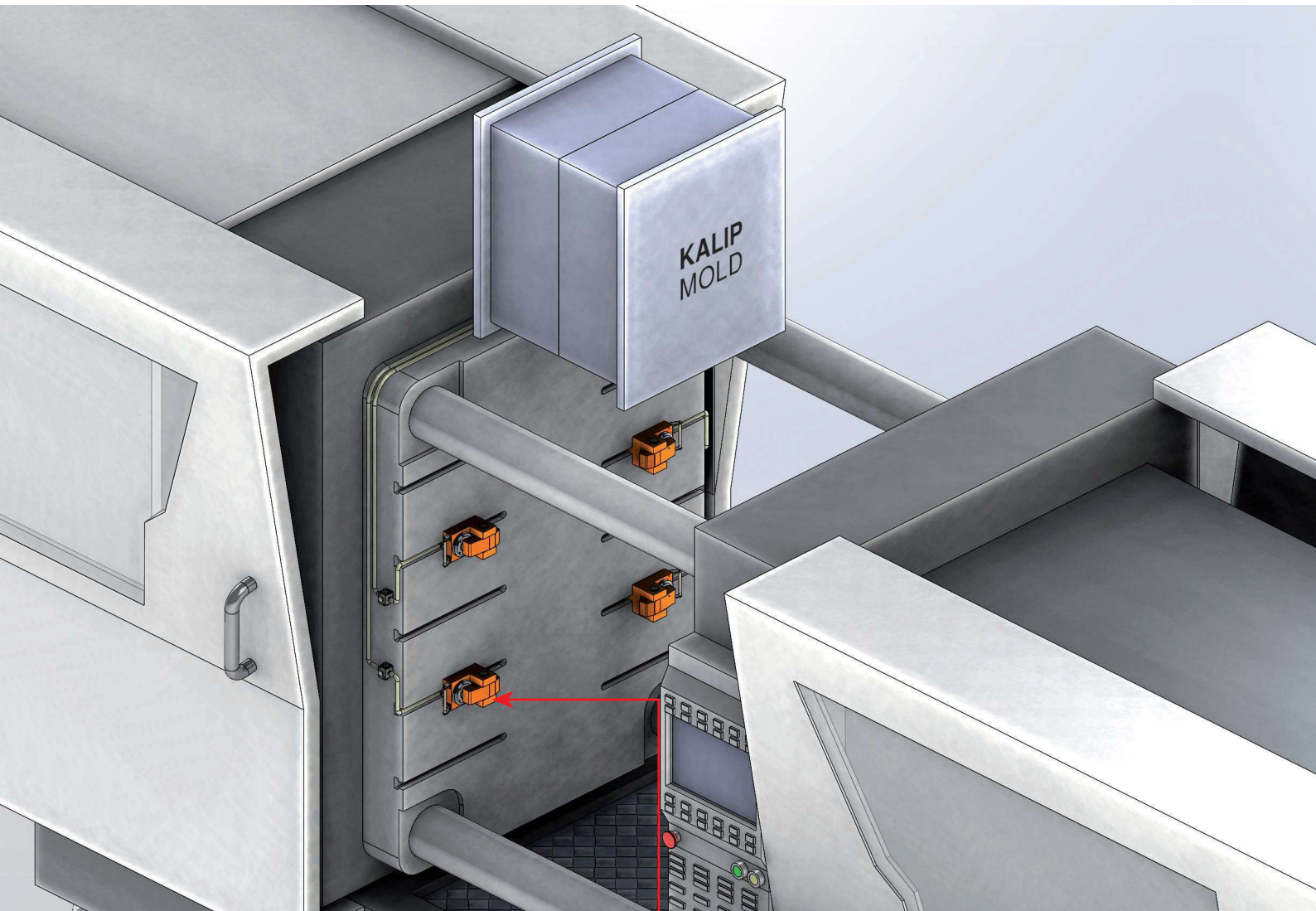
- Standard Temperature : 60°



Werkzeug-Schnellwechselsystem

Quick Mold Change System





Hydraulische Spannelemente / Hydraulic Clamp Models



Model CA



Model CV



Model CB



Model CBS



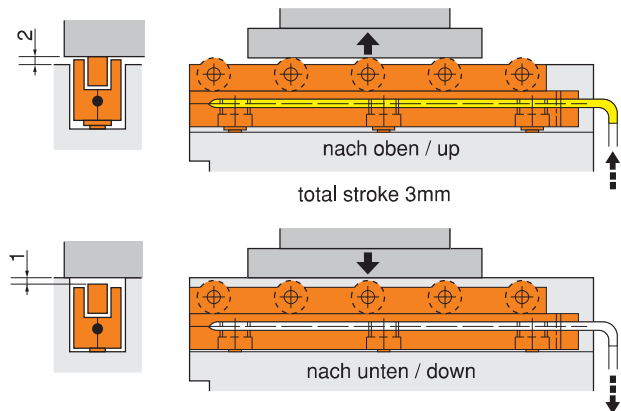
Model CC



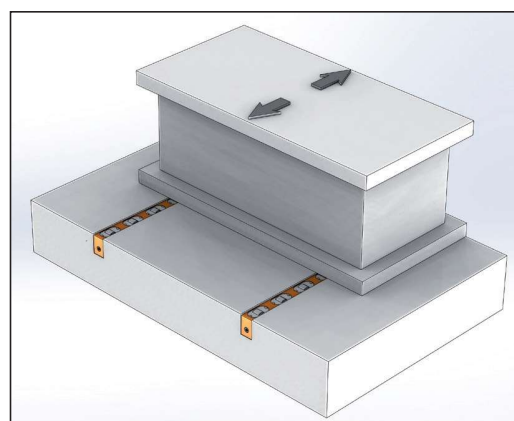
Model CD



Model CG



| | |
|--|----------------------------|
| Außenmaße Outline Dimensions | <p>D□18 Serie / Series</p> |
| Plattenbearbeitungsmaß (U-Nut) Processing Size for Plate (U-slot) | |

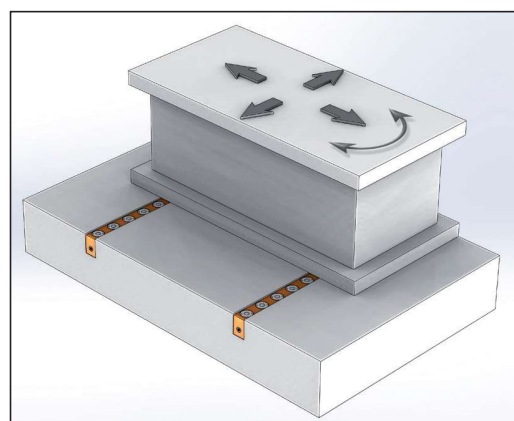


Model DL Bewegungsrichtung
Model DL Movement Direction

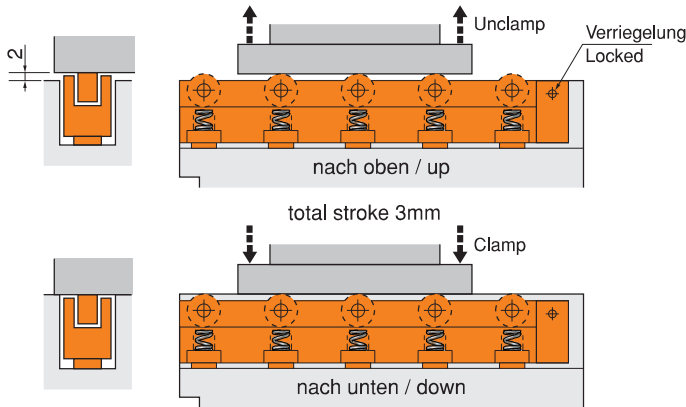
| Referenz-Nr. Order No. | L | D□18 | | | | Hydr. Zylinder Hyd. cylinder | |
|---------------------------|------|------------------------|-----------------------------|-----------------------|-----------------------------|---------------------------------|-----------------------------|
| | | DL18 | | DB18 | | Menge Quantity | Kapazität Capacity kg |
| | | Ring Roller (DL) | Kapazität Capacity kg | Kugel Ball (DB) | Kapazität Capacity kg | | |
| 1020-0200 | 200 | 3 | 300 | 5 | 250 | 2 | 560 |
| 1020-0300 | 300 | 5 | 500 | 7 | 350 | | |
| 1020-0400 | 400 | 6 | 560 | 10 | 500 | | |
| 1020-0500 | 500 | 8 | 800 | 12 | 600 | 3 | 840 |
| 1020-0600 | 600 | 9 | 840 | 15 | 750 | | |
| 1020-0700 | 700 | 11 | 840 | 17 | 840 | | |
| 1020-0800 | 800 | 12 | 1120 | 20 | 1000 | 4 | 1120 |
| 1020-0900 | 900 | 14 | 1120 | 22 | 1100 | | |
| 1020-1000 | 1000 | 15 | 1250 | 25 | 1250 | | |

1020
• Temperatur Standard : 60°

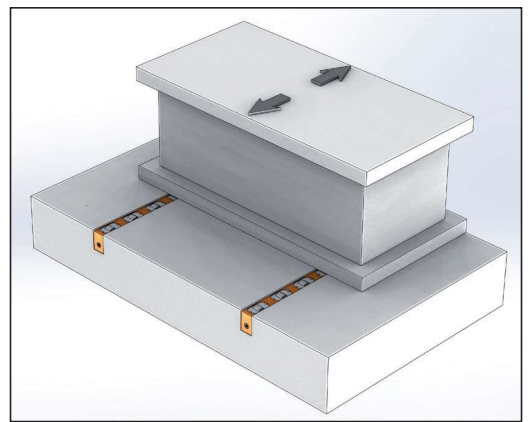
1020
• Standard Temperature : 60°



Model DB Bewegungsrichtung
Model DB Movement Direction

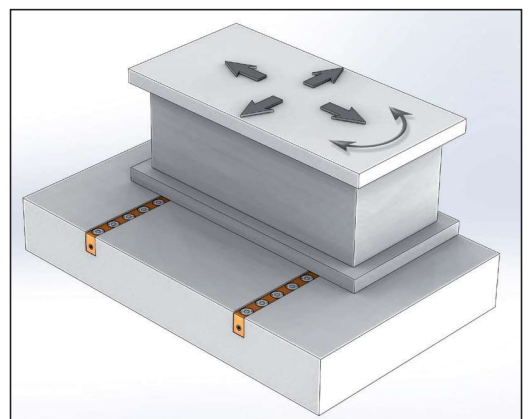


| | |
|--|----------------------------|
| Außenmaße Outline Dimensions | <p>D□18 Serie / Series</p> |
| Plattenbearbeitungsmaß (U-Nut) Processing Size for Plate (U-slot) | |



Model DLS Bewegungsrichtung
Model DLS Movement Direction

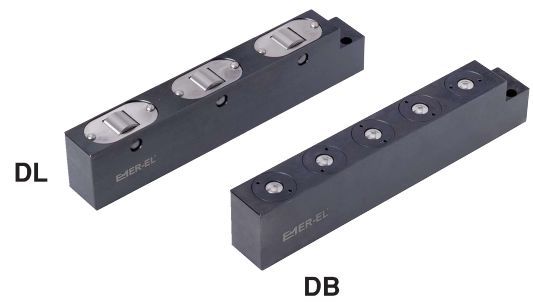
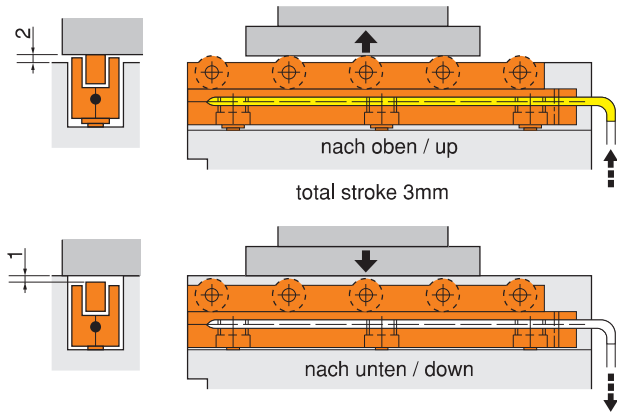
| Referenz-Nr. Order No. | L | D□18 | | | | | |
|---------------------------|------|-------------------------|----|-----------------------------|------------------------|----|-----------------------------|
| | | DLS18 | | | DBS18 | | |
| | | Ring Roller (DLS) | | Kapazität Capacity kg | Kugel Ball (DBS) | | Kapazität Capacity kg |
| 1022-0200 | 200 | 3 | 4 | 200 | 5 | 6 | 150 |
| 1022-0300 | 300 | 5 | 6 | 300 | 7 | 8 | 200 |
| 1022-0400 | 400 | 6 | 7 | 350 | 10 | 11 | 275 |
| 1022-0500 | 500 | 8 | 9 | 450 | 12 | 13 | 325 |
| 1022-0600 | 600 | 9 | 10 | 500 | 15 | 16 | 400 |
| 1022-0700 | 700 | 11 | 12 | 600 | 17 | 18 | 450 |
| 1022-0800 | 800 | 12 | 13 | 650 | 20 | 21 | 525 |
| 1022-0900 | 900 | 14 | 15 | 750 | 22 | 23 | 575 |
| 1022-1000 | 1000 | 15 | 16 | 800 | 25 | 26 | 650 |



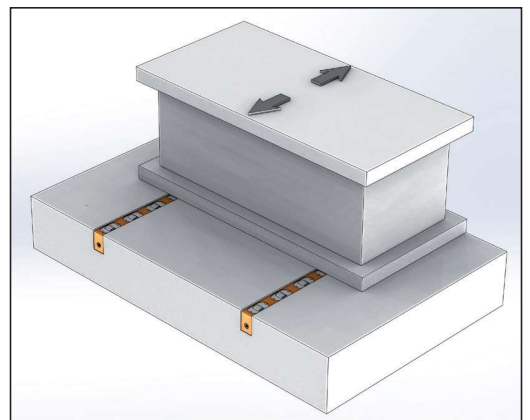
Model DBS Bewegungsrichtung
Model DBS Movement Direction

1022
• Temperatur Standard : 60°

1022
• Standard Temperature : 60°



| | |
|--|-----------------------------|
| Außenmaße Outline Dimensions | <p>D□22 Serisi / Serial</p> |
| Plattenbearbeitungsmaß (U-Nut) Processing Size for Plate (U-slot) | |



Model DL Bewegungsrichtung
Model DL Movement Direction

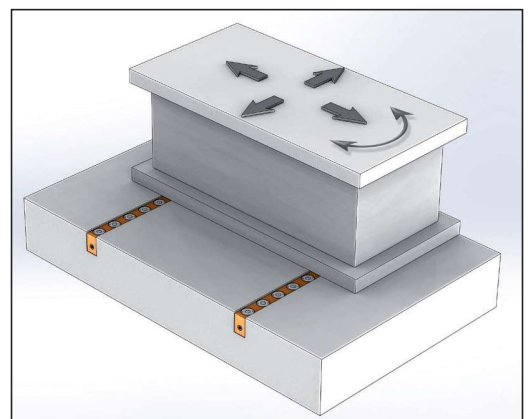
| Referenz-Nr. Order No. | L | D□22 | | | | Menge Quantity | Kapazität Capacity kg |
|---------------------------|------|------------------------|-----------------------------|-----------------------|-----------------------------|-------------------|-----------------------------|
| | | DL22 | | DB22 | | | |
| | | Ring Roller (DL) | Kapazität Capacity kg | Kugel Ball (DB) | Kapazität Capacity kg | | |
| 1020-0200 | 200 | 3 | 480 | 5 | 370 | 2 | 1000 |
| 1020-0300 | 300 | 5 | 800 | 7 | 518 | | |
| 1020-0400 | 400 | 6 | 960 | 10 | 740 | 3 | 1500 |
| 1020-0500 | 500 | 8 | 1280 | 12 | 888 | | |
| 1020-0600 | 600 | 9 | 1400 | 15 | 1110 | | |
| 1020-0700 | 700 | 11 | 1500 | 17 | 1250 | 4 | 2000 |
| 1020-0800 | 800 | 12 | 1920 | 20 | 1480 | | |
| 1020-0900 | 900 | 14 | 2000 | 22 | 1628 | | |
| 1020-1000 | 1000 | 15 | 2000 | 25 | 1850 | | |

1020

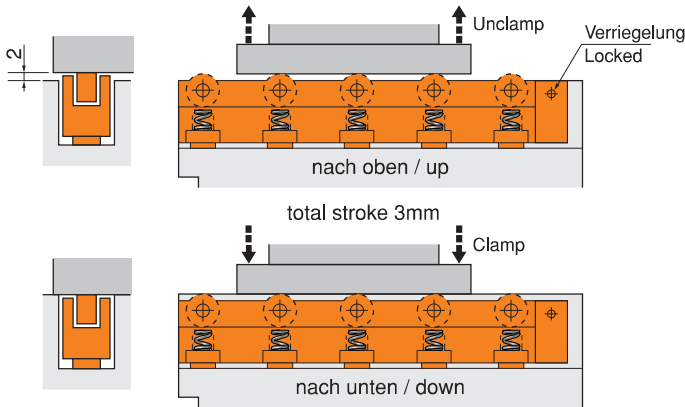
- Temperatur Standard : 60°

1020

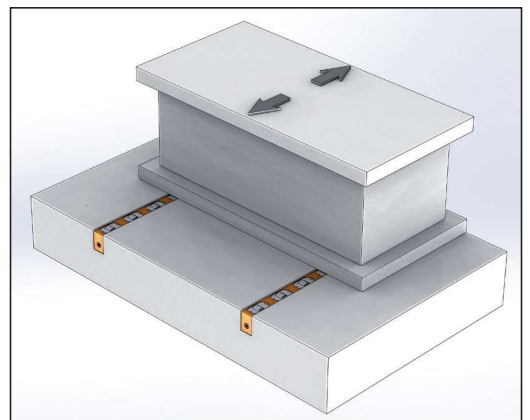
- Standard Temperature : 60°



Model DB Bewegungsrichtung
Model DB Movement Direction

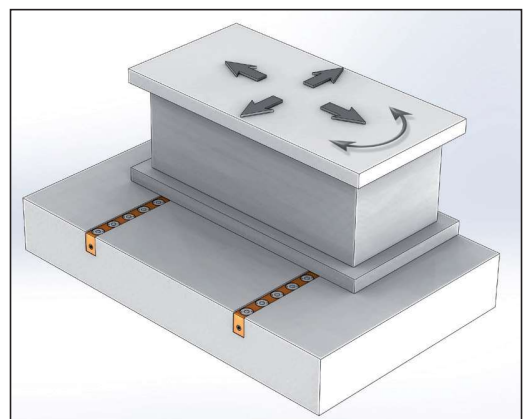


| | |
|--|-----------------------------|
| Außenmaße Outline Dimensions | <p>D□22 Serisi / Serial</p> |
| Plattenbearbeitungsmaß (U-Nut) Processing Size for Plate (U-slot) | |



Model DLS Bewegungsrichtung
Model DLS Movement Direction

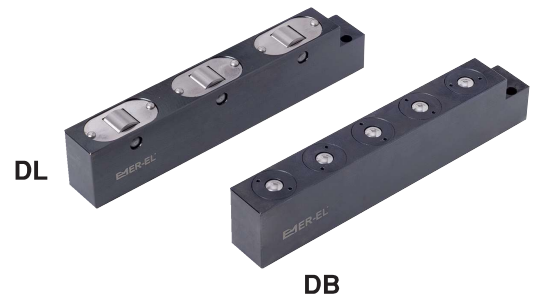
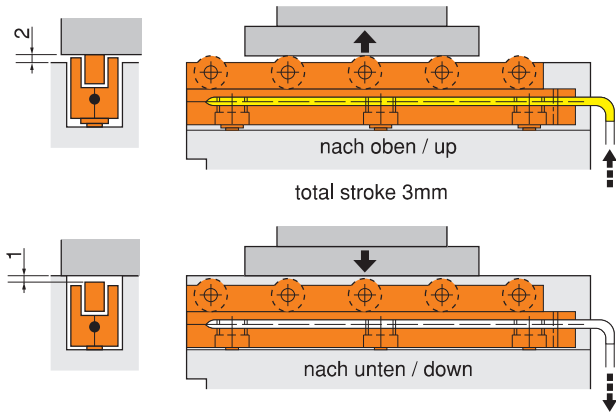
| Referenz-Nr. Order No. | L | D□22 | | | | | |
|---------------------------|------|-------------------------|----|-----------------------------|------------------------|----|-----------------------------|
| | | DLS22 | | | DBS22 | | |
| | | Ring Roller (DLS) | | Kapazität Capacity kg | Kugel Ball (DBS) | | Kapazität Capacity kg |
| 1022-0200 | 200 | 3 | 3 | 240 | 5 | 5 | 200 |
| 1022-0300 | 300 | 5 | 5 | 400 | 7 | 7 | 280 |
| 1022-0400 | 400 | 6 | 6 | 480 | 10 | 10 | 400 |
| 1022-0500 | 500 | 8 | 8 | 640 | 12 | 12 | 480 |
| 1022-0600 | 600 | 9 | 9 | 720 | 15 | 15 | 600 |
| 1022-0700 | 700 | 11 | 11 | 880 | 17 | 17 | 680 |
| 1022-0800 | 800 | 12 | 12 | 960 | 20 | 20 | 800 |
| 1022-0900 | 900 | 14 | 14 | 1120 | 22 | 22 | 880 |
| 1022-1000 | 1000 | 15 | 15 | 1200 | 25 | 25 | 1000 |



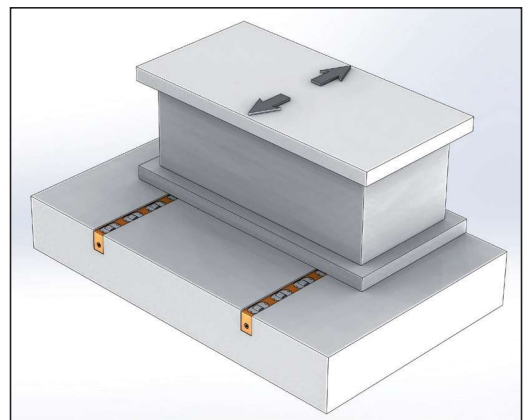
Model DBS Bewegungsrichtung
Model DBS Movement Direction

1022
• Temperatur Standard : 60°

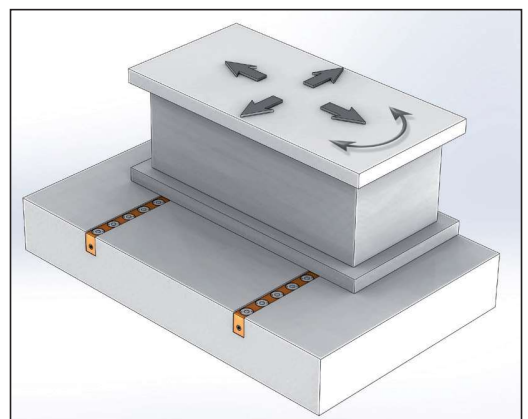
1022
• Standard Temperature : 60°



| | |
|--|----------------------------|
| Außenmaße Outline Dimensions | <p>D□28 Serie / Series</p> |
| Plattenbearbeitungsmaß (U-Nut) Processing Size for Plate (U-slot) | |



Model DL Bewegungsrichtung
Model DL Movement Direction

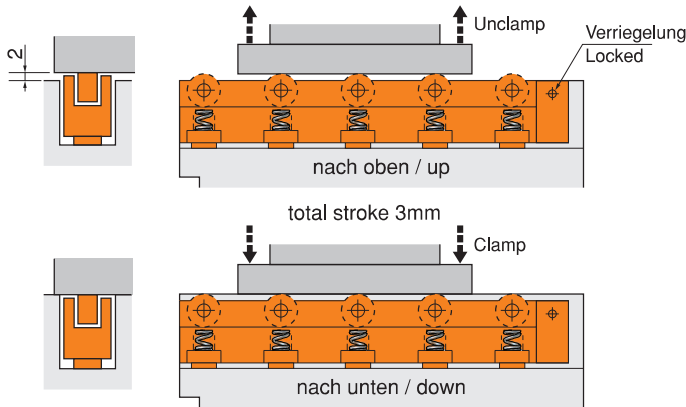


Model DB Bewegungsrichtung
Model DB Movement Direction

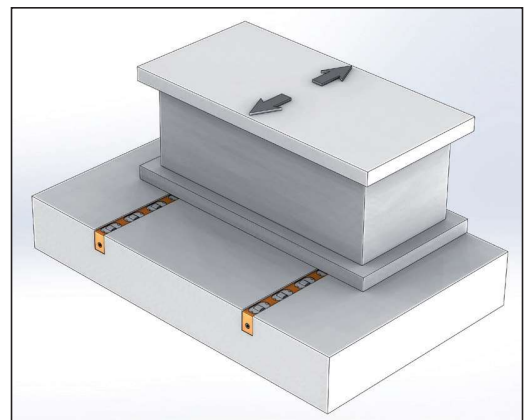
| Referenz-Nr. Order No. | L | D□28 | | | | Hydr. Zylinder Hyd. cylinder | |
|---------------------------|------|------------------------|-----------------------------|-----------------------|-----------------------------|---------------------------------|-----------------------------|
| | | DL28 | | DB28 | | Menge Quantity | Kapazität Capacity kg |
| | | Ring Roller (DL) | Kapazität Capacity kg | Kugel Ball (DB) | Kapazität Capacity kg | | |
| 1020-0200 | 200 | 3 | 750 | 5 | 475 | 2 | 1260 |
| 1020-0300 | 300 | 5 | 1250 | 7 | 665 | | |
| 1020-0400 | 400 | 6 | 1260 | 10 | 950 | 3 | 1890 |
| 1020-0500 | 500 | 8 | 1890 | 12 | 1140 | | |
| 1020-0600 | 600 | 9 | 1890 | 15 | 1425 | 4 | 2520 |
| 1020-0700 | 700 | 11 | 1890 | 17 | 1615 | | |
| 1020-0800 | 800 | 12 | 2520 | 20 | 1900 | 5 | 3150 |
| 1020-0900 | 900 | 14 | 2520 | 22 | 2090 | | |
| 1020-1000 | 1000 | 15 | 3150 | 25 | 2375 | 6 | 3780 |
| 1020-1100 | 1100 | 16 | 3150 | 27 | 2565 | | |
| 1020-1200 | 1200 | 17 | 3150 | 30 | 2850 | 7 | 4410 |
| 1020-1300 | 1300 | 18 | 3780 | 32 | 3040 | | |
| 1020-1400 | 1400 | 19 | 3780 | 35 | 3325 | 8 | 5040 |
| 1020-1500 | 1500 | 20 | 3780 | 37 | 3515 | | |
| 1020-1600 | 1600 | 22 | 4410 | 40 | 3800 | 8 | 5040 |
| 1020-1700 | 1700 | 24 | 4410 | 42 | 3990 | | |
| 1020-1800 | 1800 | 25 | 4410 | 45 | 4275 | | |
| 1020-1900 | 1900 | 27 | 5040 | 47 | 4465 | | |

1020
• Temperatur Standard : 60°

1020
• Standard Temperature : 60°

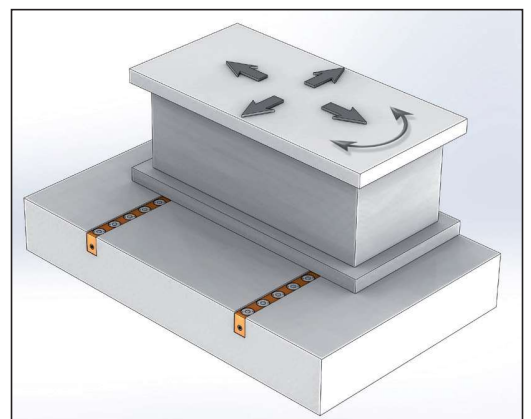


| | |
|--|----------------------------|
| Außenmaße Outline Dimensions | <p>D□28 Serie / Series</p> |
| Plattenbearbeitungsmaß (U-Nut) Processing Size for Plate (U-slot) | |



Model DLS Bewegungsrichtung
Model DLS Movement Direction

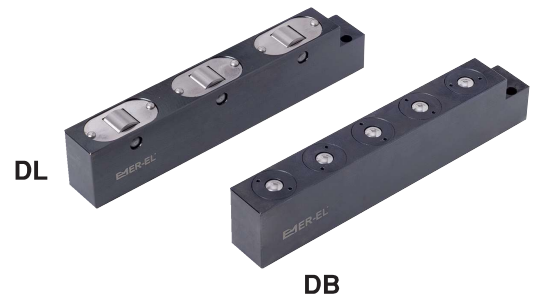
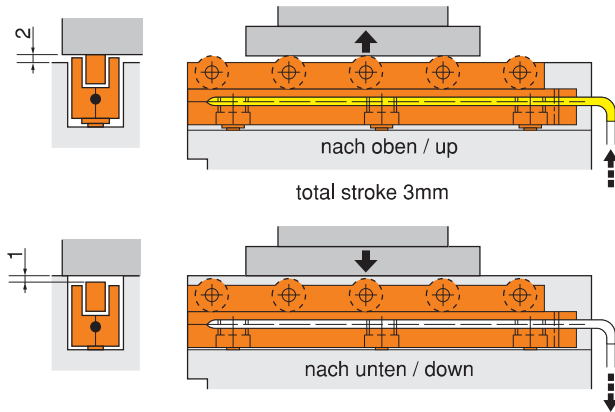
| Referenz-Nr. Order No. | L | D□28 | | | | | |
|---------------------------|------|-------------------------|----|-----------------------------|------------------------|----|-----------------------------|
| | | DLS28 | | | DBS28 | | |
| | | Ring Roller (DLS) | | Kapazität Capacity kg | Kugel Ball (DBS) | | Kapazität Capacity kg |
| 1022-0200 | 200 | 3 | 4 | 500 | 5 | 5 | 315 |
| 1022-0300 | 300 | 5 | 6 | 750 | 7 | 7 | 441 |
| 1022-0400 | 400 | 6 | 7 | 875 | 10 | 10 | 630 |
| 1022-0500 | 500 | 8 | 9 | 1125 | 12 | 12 | 756 |
| 1022-0600 | 600 | 9 | 10 | 1250 | 15 | 15 | 945 |
| 1022-0700 | 700 | 11 | 12 | 1500 | 17 | 17 | 1071 |
| 1022-0800 | 800 | 12 | 13 | 1625 | 20 | 20 | 1260 |
| 1022-0900 | 900 | 14 | 15 | 1875 | 22 | 22 | 1386 |
| 1022-1000 | 1000 | 15 | 16 | 2000 | 25 | 25 | 1575 |
| 1022-1100 | 1100 | 16 | 17 | 2125 | 27 | 27 | 1701 |
| 1022-1200 | 1200 | 17 | 18 | 2250 | 30 | 30 | 1890 |
| 1022-1300 | 1300 | 18 | 19 | 2375 | 32 | 32 | 2016 |
| 1022-1400 | 1400 | 19 | 20 | 2500 | 35 | 35 | 2205 |
| 1022-1500 | 1500 | 20 | 21 | 2625 | 37 | 37 | 2331 |
| 1022-1600 | 1600 | 22 | 23 | 2875 | 40 | 40 | 2520 |
| 1022-1700 | 1700 | 24 | 25 | 3125 | 42 | 42 | 2646 |
| 1022-1800 | 1800 | 25 | 26 | 3250 | 45 | 45 | 2835 |
| 1022-1900 | 1900 | 27 | 28 | 3500 | 47 | 47 | 2961 |



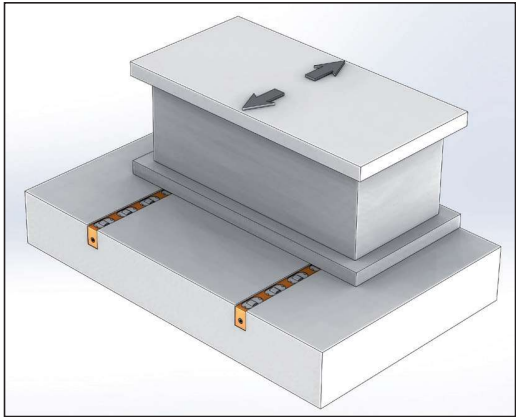
Model DBS Bewegungsrichtung
Model DBS Movement Direction

1022
• Temperatur Standard : 60°

1022
• Standard Temperature : 60°

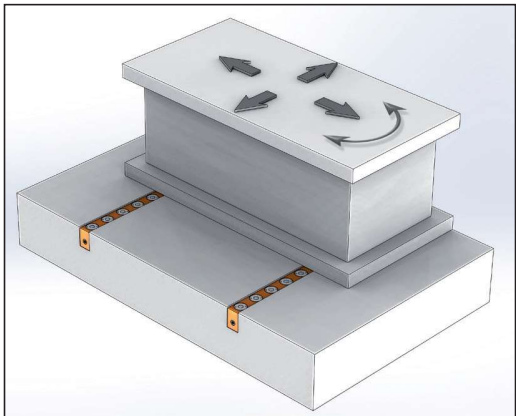


| | |
|--|----------------------------|
| Außenmaße Outline Dimensions | <p>D□36 Serie / Series</p> |
| Plattenbearbeitungsmaß (U-Nut) Processing Size for Plate (U-slot) | |



Model DL Bewegungsrichtung
Model DL Movement Direction

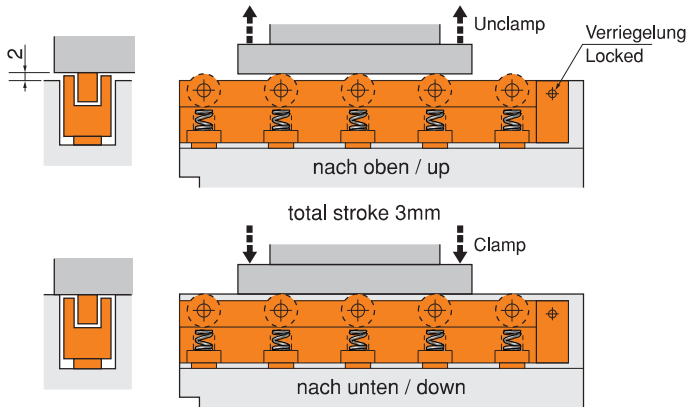
| Referenz-Nr. Order No. | L | D□36 | | | | Hydr. Zylinder Hyd. cylinder | |
|---------------------------|------|------------------------|-----------------------------|-----------------------|-----------------------------|---------------------------------|-----------------------------|
| | | DL36 | | DB36 | | Menge Quantity | Kapazität Capacity kg |
| | | Ring Roller (DL) | Kapazität Capacity kg | Kugel Ball (DB) | Kapazität Capacity kg | | |
| 1020-0200 | 200 | 3 | 1050 | 5 | 600 | 2 | 1700 |
| 1020-0300 | 300 | 5 | 1750 | 7 | 840 | | |
| 1020-0400 | 400 | 6 | 1700 | 10 | 1200 | | |
| 1020-0500 | 500 | 8 | 2600 | 12 | 1440 | 3 | 2600 |
| 1020-0600 | 600 | 9 | 2600 | 15 | 1800 | | |
| 1020-0700 | 700 | 11 | 2600 | 17 | 2040 | | |
| 1020-0800 | 800 | 12 | 2600 | 20 | 2400 | 4 | 3500 |
| 1020-0900 | 900 | 14 | 3500 | 22 | 2640 | | |
| 1020-1000 | 1000 | 15 | 3500 | 25 | 3000 | | |
| 1020-1100 | 1100 | 16 | 3500 | 27 | 3240 | 5 | 4400 |
| 1020-1200 | 1200 | 17 | 4400 | 30 | 3600 | | |
| 1020-1300 | 1300 | 18 | 4400 | 32 | 3840 | | |
| 1020-1400 | 1400 | 19 | 4400 | 35 | 4200 | 6 | 5300 |
| 1020-1500 | 1500 | 20 | 4400 | 37 | 4400 | | |
| 1020-1600 | 1600 | 22 | 5300 | 40 | 4800 | | |
| 1020-1700 | 1700 | 24 | 5300 | 42 | 5040 | | |
| 1020-1800 | 1800 | 25 | 5300 | 45 | 5300 | | |
| 1020-1900 | 1900 | 27 | 5300 | 47 | 5300 | | |



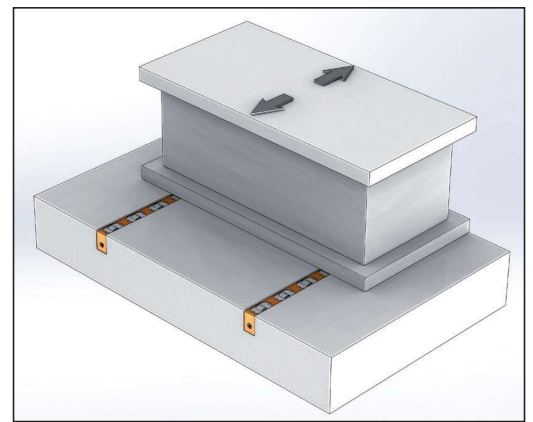
Model DB Bewegungsrichtung
Model DB Movement Direction

1020
• Temperatur Standard : 60°

1020
• Standard Temperature : 60°

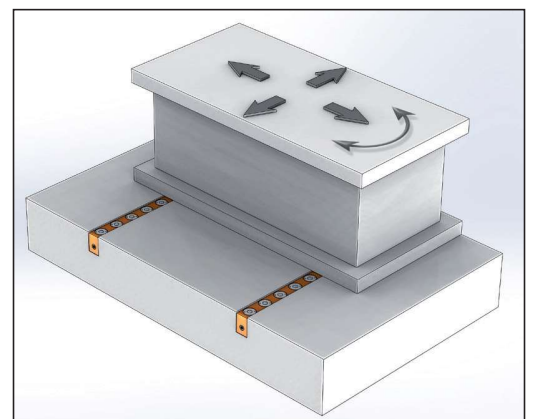


| | |
|--|----------------------------|
| Außenmaße Outline Dimensions | <p>D□36 Serie / Series</p> |
| Plattenbearbeitungsmaß (U-Nut) Processing Size for Plate (U-slot) | |



Model DLS Bewegungsrichtung
Model DLS Movement Direction

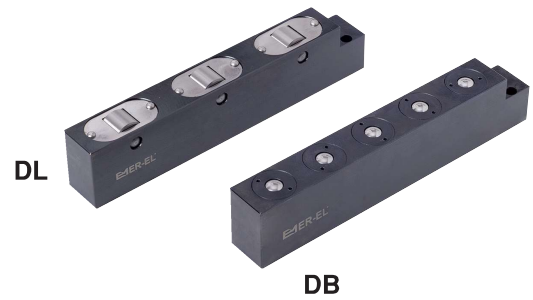
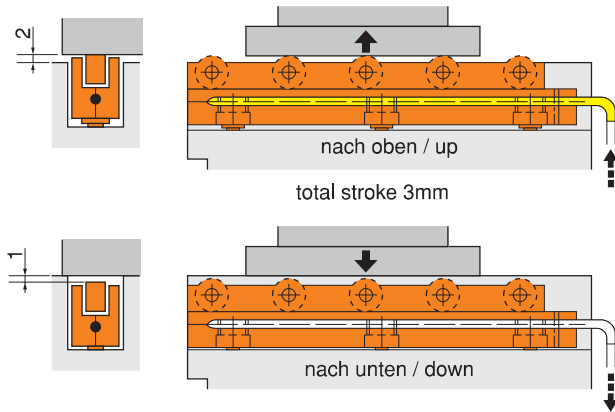
| Referenz-Nr. Order No. | L | D□36 | | | | | |
|---------------------------|------|-------------------------|----|-----------------------------|------------------------|----|-----------------------------|
| | | DLS36 | | | DBS36 | | |
| | | Ring Roller (DLS) | | Kapazität Capacity kg | Kugel Ball (DBS) | | Kapazität Capacity kg |
| 1022-0200 | 200 | 3 | 3 | 600 | 5 | 5 | 500 |
| 1022-0300 | 300 | 5 | 5 | 1000 | 7 | 7 | 700 |
| 1022-0400 | 400 | 6 | 6 | 1200 | 10 | 10 | 1000 |
| 1022-0500 | 500 | 8 | 8 | 1600 | 12 | 12 | 1200 |
| 1022-0600 | 600 | 9 | 9 | 1800 | 15 | 15 | 1500 |
| 1022-0700 | 700 | 11 | 11 | 2200 | 17 | 17 | 1700 |
| 1022-0800 | 800 | 12 | 12 | 2400 | 20 | 20 | 2000 |
| 1022-0900 | 900 | 14 | 14 | 2800 | 22 | 22 | 2200 |
| 1022-1000 | 1000 | 15 | 15 | 3000 | 25 | 25 | 2500 |
| 1022-1100 | 1100 | 16 | 16 | 3200 | 27 | 27 | 2700 |
| 1022-1200 | 1200 | 17 | 17 | 3400 | 30 | 30 | 3000 |
| 1022-1300 | 1300 | 18 | 18 | 3600 | 32 | 32 | 3200 |
| 1022-1400 | 1400 | 19 | 19 | 3800 | 35 | 35 | 3500 |
| 1022-1500 | 1500 | 20 | 20 | 4000 | 37 | 37 | 3700 |
| 1022-1600 | 1600 | 22 | 22 | 4400 | 40 | 40 | 4000 |
| 1022-1700 | 1700 | 24 | 24 | 4800 | 42 | 42 | 4200 |
| 1022-1800 | 1800 | 25 | 25 | 5000 | 45 | 45 | 4500 |
| 1022-1900 | 1900 | 27 | 27 | 5400 | 47 | 47 | 4700 |



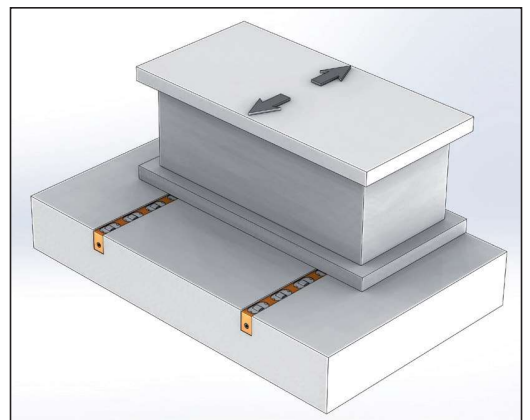
Model DBS Bewegungsrichtung
Model DBS Movement Direction

1022
• Temperatur Standard : 60°

1022
• Standard Temperature : 60°

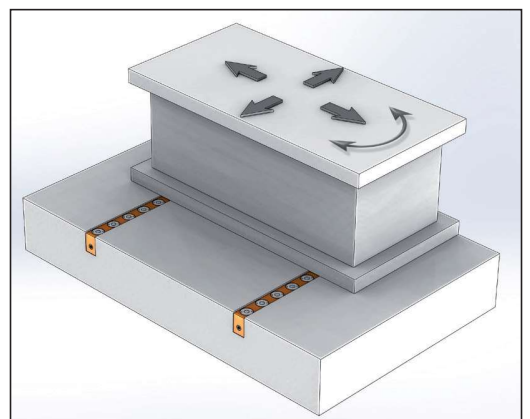


| | D□50 Serie / Series | D□50 Serie / Series |
|--|---------------------|---------------------|
| Außenmaße Outline Dimensions | | |
| Plattenbearbeitungsmaß (U-Nut) Processing Size for Plate (U-slot) | | |



Model DL Bewegungsrichtung
Model DL Movement Direction

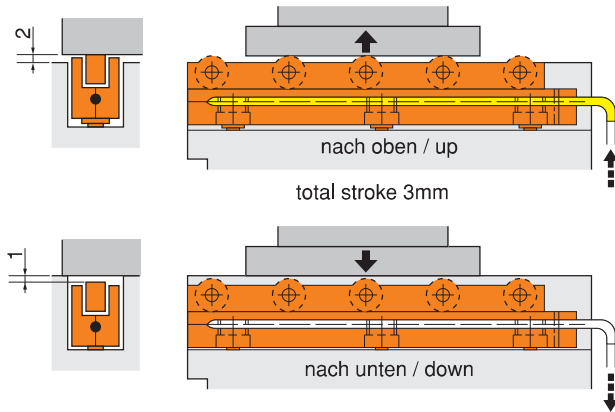
| Referenz-Nr. Order No. | L | D□50 | | | | | |
|---------------------------|------|------------------------|-----------------------------|-----------------------|-----------------------------|-------------------|-----------------------------|
| | | DL50 | | DB50 | | Menge Quantity | Kapazität Capacity kg |
| | | Ring Roller (DL) | Kapazität Capacity kg | Kugel Ball (DB) | Kapazität Capacity kg | | |
| 1020-0200 | 200 | 2 | 1000 | 4 | 640 | 2 | 2200 |
| 1020-0300 | 300 | 3 | 1500 | 6 | 960 | | |
| 1020-0400 | 400 | 4 | 2000 | 9 | 1440 | 3 | 3300 |
| 1020-0500 | 500 | 5 | 2500 | 11 | 1760 | | |
| 1020-0600 | 600 | 6 | 3000 | 13 | 2080 | | |
| 1020-0700 | 700 | 7 | 3300 | 16 | 2560 | 4 | 4400 |
| 1020-0800 | 800 | 8 | 3300 | 18 | 2880 | | |
| 1020-0900 | 900 | 9 | 4400 | 20 | 3200 | | |
| 1020-1000 | 1000 | 10 | 4400 | 23 | 3680 | | |
| 1020-1100 | 1100 | 11 | 4400 | 25 | 4000 | 5 | 5500 |
| 1020-1200 | 1200 | 12 | 5500 | 27 | 4320 | | |
| 1020-1300 | 1300 | 13 | 5500 | 29 | 4640 | | |
| 1020-1400 | 1400 | 14 | 5500 | 31 | 4960 | | |
| 1020-1500 | 1500 | 15 | 5500 | 33 | 5280 | | |
| 1020-1600 | 1600 | 16 | 6500 | 35 | 5600 | 6 | 6600 |
| 1020-1700 | 1700 | 17 | 6500 | 38 | 6080 | | |
| 1020-1800 | 1800 | 18 | 6500 | 40 | 6400 | | |
| 1020-1900 | 1900 | 19 | 6500 | 42 | 6720 | | |
| 1020-2000 | 2000 | 20 | 7700 | 44 | 7040 | | |
| 1020-2100 | 2100 | 21 | 7700 | 46 | 7360 | | |
| 1020-2200 | 2200 | 22 | 7700 | 48 | 7680 | | |
| 1020-2300 | 2300 | 23 | 7700 | 50 | 7700 | | |
| 1020-2400 | 2400 | 24 | 8800 | 52 | 8320 | | |
| 1020-2500 | 2500 | 25 | 8800 | 54 | 8640 | | |



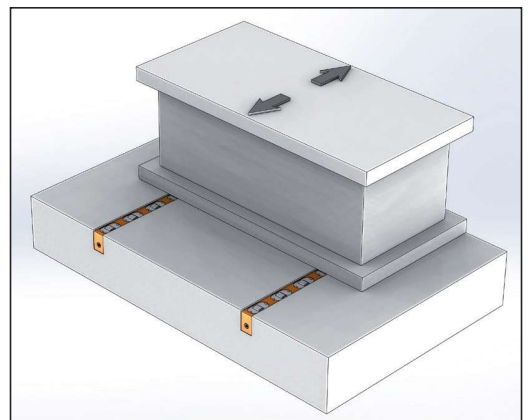
Model DB Bewegungsrichtung
Model DB Movement Direction

1020
• Temperatur Standard : 60°

1020
• Standard Temperature : 60°



| | |
|--|----------------------------|
| Außenmaße Outline Dimensions | <p>D□80 Serie / Series</p> |
| Plattenbearbeitungsmaß (U-Nut) Processing Size for Plate (U-slot) | |



Model DL Bewegungsrichtung
Model DL Movement Direction

| Referenz-Nr. Order No. | L | D□80 | | | |
|---------------------------|------|------------------------|-----------------------------|--------------------------------|-----------------------------|
| | | DL80 | | Hid. Silindir Hyd. cylinder | |
| | | Ring Roller (DL) | Kapazität Capacity kg | Menge Quantity | Kapazität Capacity kg |
| 1020-0200 | 200 | - | - | - | - |
| 1020-0300 | 300 | - | - | - | - |
| 1020-0400 | 400 | - | - | - | - |
| 1020-0500 | 500 | 5 | 3250 | 2 | 5600 |
| 1020-0600 | 600 | 6 | 3900 | | |
| 1020-0700 | 700 | 7 | 4550 | | |
| 1020-0800 | 800 | 8 | 5200 | 3 | 8400 |
| 1020-0900 | 900 | 9 | 5850 | | |
| 1020-1000 | 1000 | 10 | 6500 | | |
| 1020-1100 | 1100 | 11 | 7150 | 4 | 11200 |
| 1020-1200 | 1200 | 12 | 7800 | | |
| 1020-1300 | 1300 | 13 | 8450 | | |
| 1020-1400 | 1400 | 14 | 9100 | | |
| 1020-1500 | 1500 | 15 | 9750 | 5 | 14000 |
| 1020-1600 | 1600 | 16 | 10400 | | |
| 1020-1700 | 1700 | 17 | 11050 | | |
| 1020-1800 | 1800 | 18 | 11700 | 6 | 16800 |
| 1020-1900 | 1900 | 19 | 12350 | | |
| 1020-2000 | 2000 | 20 | 13000 | | |
| 1020-2100 | 2100 | 21 | 13650 | 7 | 19600 |
| 1020-2200 | 2200 | 22 | 14300 | | |
| 1020-2300 | 2300 | 23 | 14950 | | |
| 1020-2400 | 2400 | 24 | 15600 | | |
| 1020-2500 | 2500 | 25 | 16250 | 8 | 22400 |

1020
• Temperatur Standard : 60°

1020
• Standard Temperature : 60°

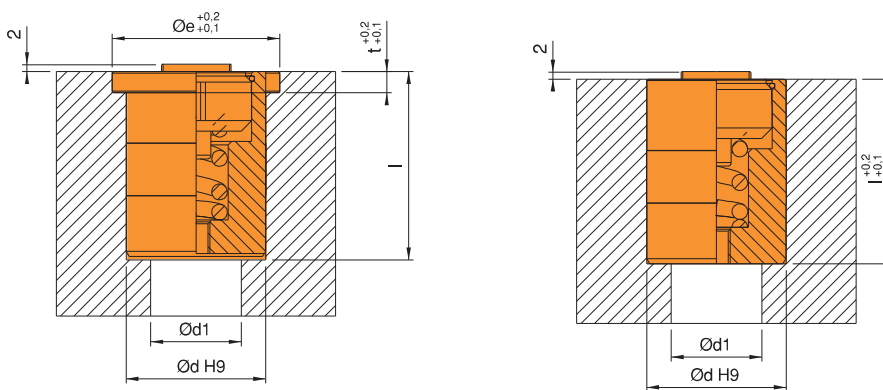
| Referenz-Nr. Order No. | d | Kapazität Capacity kg | e | t | l | d1 | (g) |
|---------------------------|----|-----------------------------|----|-----|----|----|---------|
| 1022-DLSD0050 | 20 | 50 | 25 | 3.5 | 31 | 10 | 45 |
| 1022-DLSD0080 | 24 | 80 | 30 | 4 | 39 | 14 | 75 |
| 1022-DLSD0125 | 30 | 125 | 35 | 5 | 45 | 20 | 140 |
| 1022-DLSD0200 | 40 | 200 | 50 | 6 | 54 | 30 | 375 |
| 1022-DLSDD050 | 20 | 50 | - | - | 30 | 10 | 35 |
| 1022-DLSDD080 | 24 | 80 | - | - | 38 | 14 | 70 |
| 1022-DLSDD125 | 30 | 125 | - | - | 44 | 20 | 130 |
| 1022-DLSDD200 | 40 | 200 | - | - | 53 | 30 | 240 |



DLSD

DLSDD

1022



Federzylinder Werkzeugheber Modell DLS

Die Lifter Spring Cylinder Model DBS

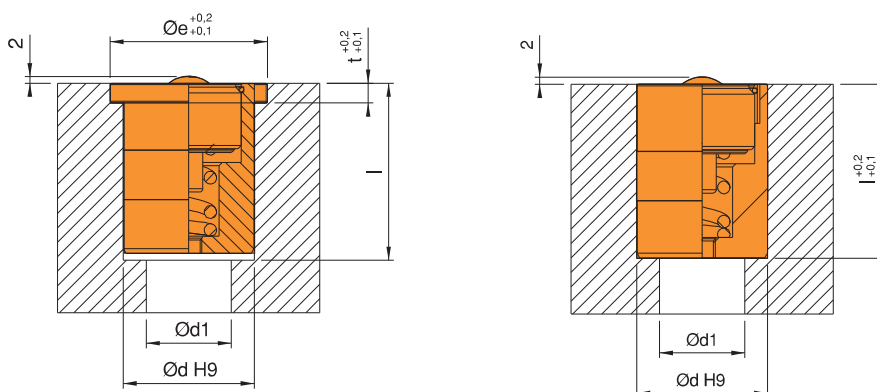
| Referenz-Nr. Order No. | d | Kapazität Capacity kg | e | t | l | d1 | (g) |
|---------------------------|----|-----------------------------|----|-----|----|----|---------|
| 1022-DBSD0025 | 20 | 25 | 25 | 3.5 | 31 | 10 | 45 |
| 1022-DBSD0040 | 24 | 40 | 30 | 4 | 39 | 14 | 85 |
| 1022-DBSD0063 | 30 | 63 | 35 | 5 | 45 | 20 | 150 |
| 1022-DBSD0100 | 40 | 100 | 50 | 6 | 54 | 30 | 350 |
| 1022-DBSDD025 | 20 | 25 | - | - | 30 | 10 | 40 |
| 1022-DBSDD040 | 24 | 40 | - | - | 38 | 14 | 80 |
| 1022-DBSDD063 | 30 | 63 | - | - | 44 | 20 | 140 |
| 1022-DBSDD100 | 40 | 100 | - | - | 53 | 30 | 325 |



DBSD

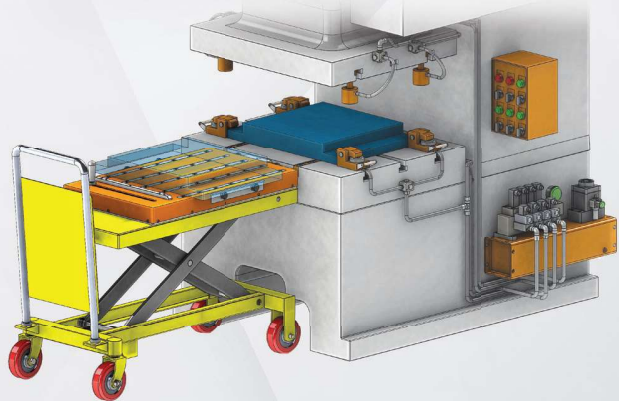
DBSDD

1022



Werkzeugtransportplatte

Mold Transport Tray



Anwendungsbeispiele für Werkzeugwechselwagen / Mold Transport Tray Applications



Werkzeugtransportplatte
Mold Transport Tray



Werkzeugwechselwagen
Mold Transport Tray (Trolley)



Elektrischer Werkzeugwechselwagen
Mold Transport Tray (Electric Forklift)



Werkzeugwechselwagen (Gabelstapler)
Mold Transport Tray (Forklift)



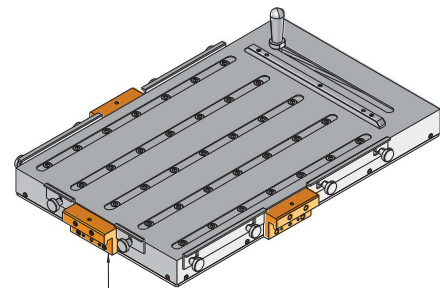
| Referenz-Nr. Order No. | A | L2 | H | L | Kapazität Capacity |
|---------------------------|-----|-----|----|-----|-----------------------|
| 1024-500670 | 500 | 670 | 71 | 818 | 1 Tonne / Tone |

1024

- Für Werkzeuge bis zu einem Gewicht von 1 Tonne geeignet. Er reduziert den Oberflächenkontakt, wenn das Werkzeug während der Beladung bewegt werden soll, um auf den Pressentisch oder ins Regal zu platzieren. So bietet es die Möglichkeit, das Werkzeug einfach und schnell ohne großen Kraftaufwand zu beladen.
- Sie kann auf Werkzeugwagen oder Gabelstaplern montiert werden und ist einfach zu bedienen.

1024

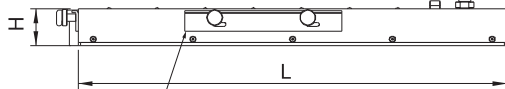
- Molds up to 1 ton weight, it reduces surface contact when it is desired to be moved during loading to be placed on the press table or shelves. Thus, it provides the possibility of loading the mold easily and quickly without the need for much power.
- It can be mounted on mold cart or forklifts and can be easily used.



Ausrichthaken Auf vordere und seitliche Flächen kann es montiert werden.

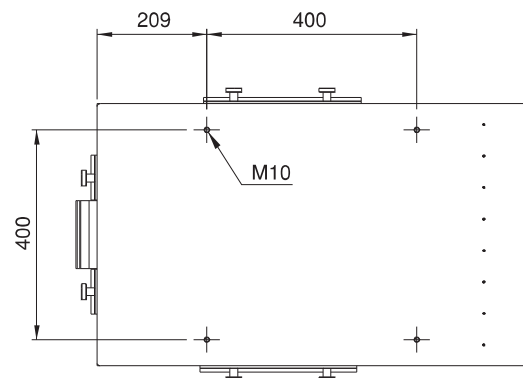
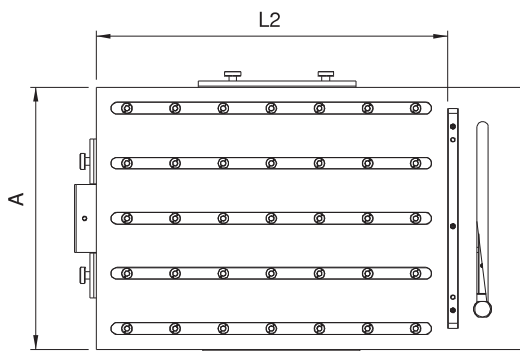
It can be mounted on the front and side surfaces.

Systembewegungsarm
System Motion Arm



Sicherheitsanschlüge auf 4 Seiten
Four-Sided Safety Stopper

Montagelöcher für Transportwagen oder ähnliche Systeme
Mounting Holes For Transport Tray and Similar Equipment



Anwendungsbeispiele für Werkzeugwechselwagen / Mold Transport Tray Applications



Werkzeugtransportplatte
Mold Transport Tray



Werkzeugwechselwagen
Mold Transport Tray (Trolley)



Elektrischer Werkzeugwechselwagen
Mold Transport Tray (Electric Forklift)



Werkzeugwechselwagen (Gabelstapler)
Mold Transport Tray (Forklift)

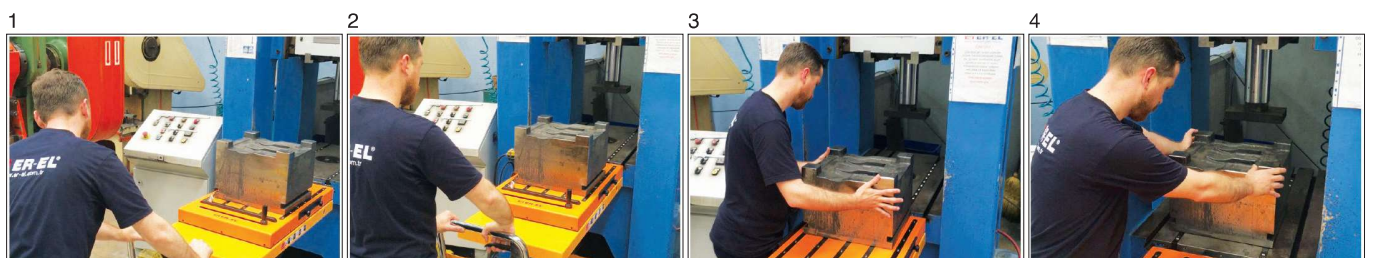
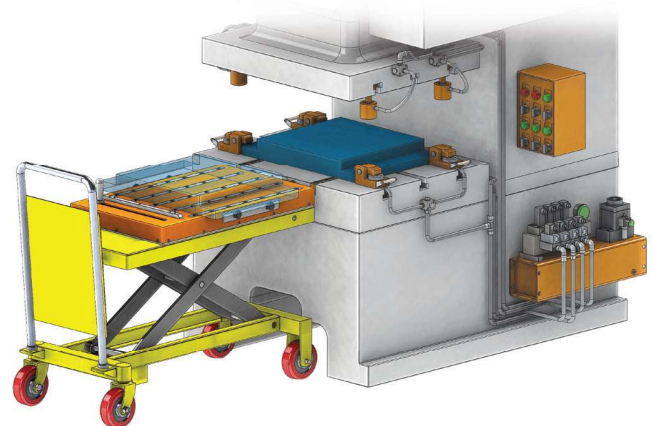
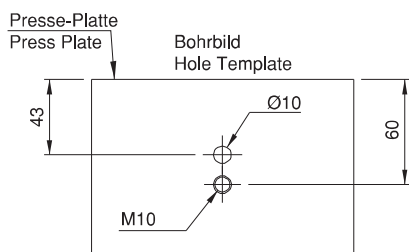
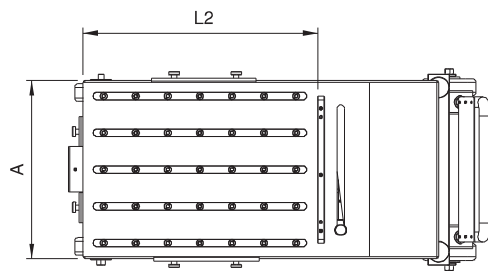
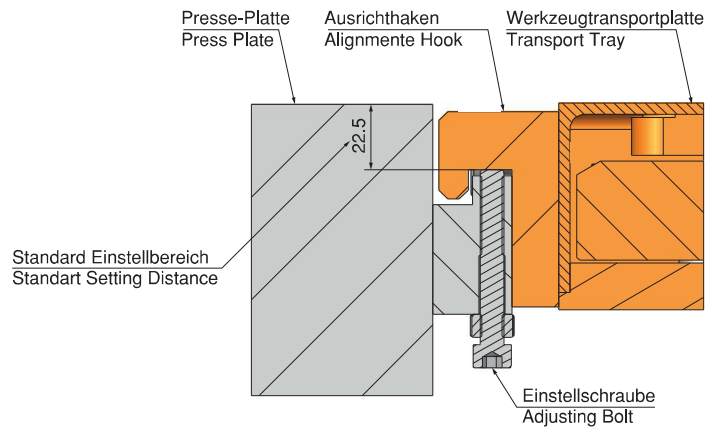
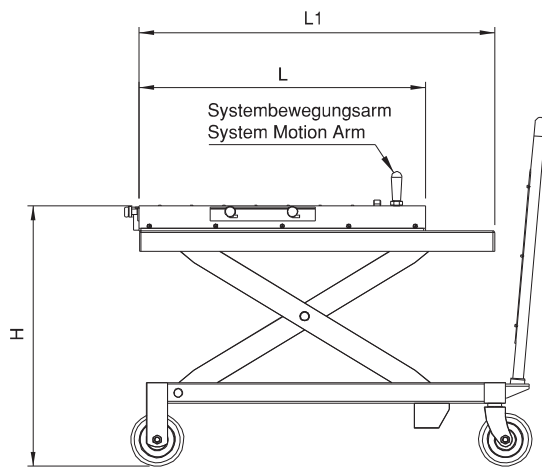
| Referenz-Nr. Order No. | A | L2 | H (min. - max.) | L | L1 | Kapazität Capacity |
|---------------------------|-----|-----|--------------------|-----|------|-----------------------|
| 1024-500671 | 500 | 670 | 480 - 1050 | 818 | 1015 | 1 Tonne / Tone |

1024

- Für Werkzeuge bis zu einem Gewicht von 1 Tonne geeignet. Er reduziert den Oberflächenkontakt, wenn das Werkzeug während der Beladung bewegt werden soll, um auf den Pressentisch oder ins Regal zu platzieren. So bietet es die Möglichkeit, das Werkzeug einfach und schnell ohne großen Kraftaufwand zu beladen.

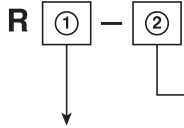
1024

- Molds up to 1 ton weight, it reduces surface contact when it is desired to be moved during loading to be placed on the press table or shelves. Thus, it provides the possibility of loading the mold easily and quickly without the need for much power.

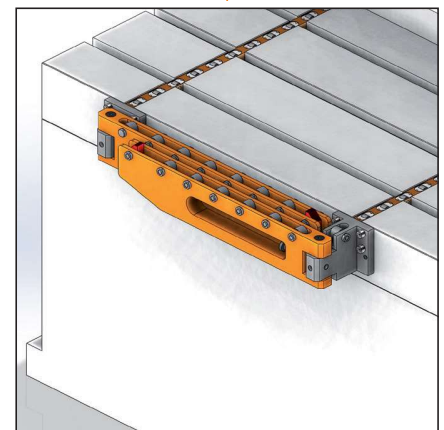
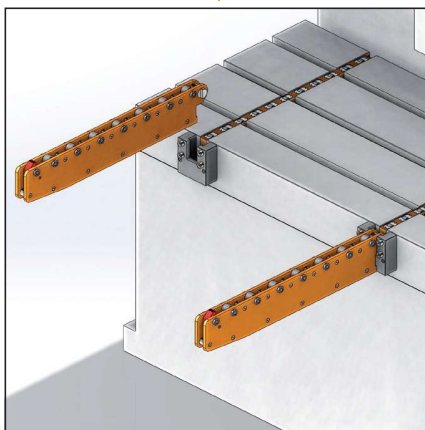
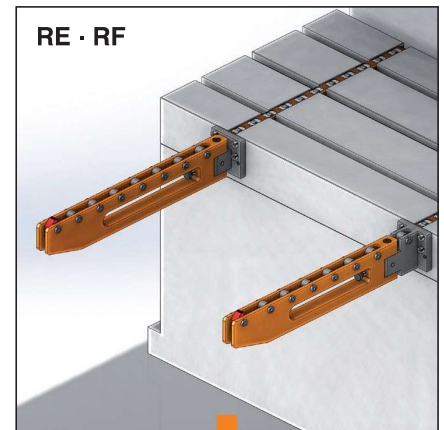
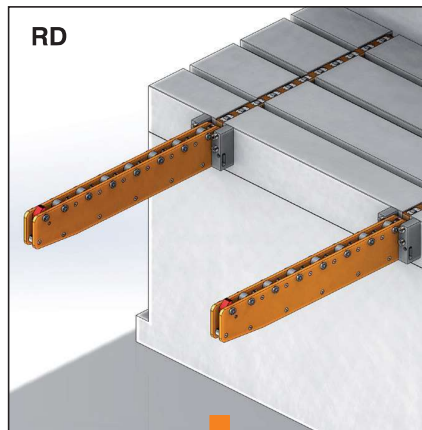
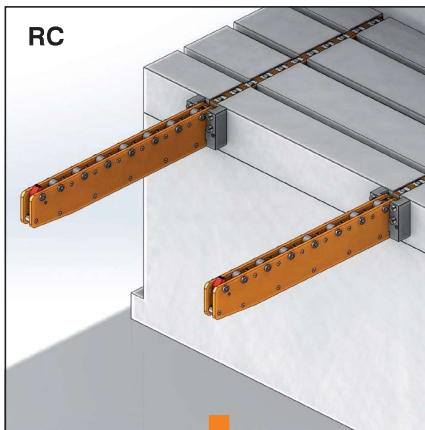
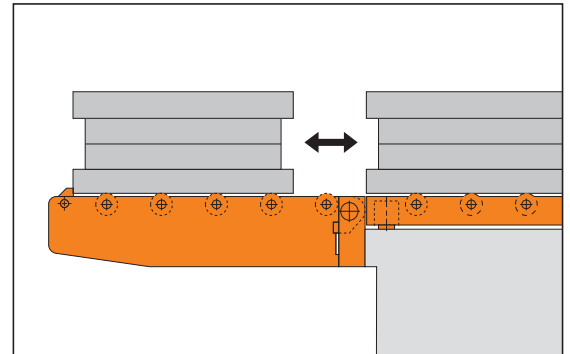


Modell / Model RC - RD - RE/RF

Modellauswahl / Model Selection



| Modell Model | Lagermethode Storage Method | Beschreibung Specification |
|-----------------|-----------------------------------|-------------------------------|
| C | demontiert / dismantling | 580 mm |
| D | hängend / hanging | 760 mm |
| E | klappend (kurz) / folding (short) | 880 mm |
| F | klappend (lang) / folding (long) | 990 mm |

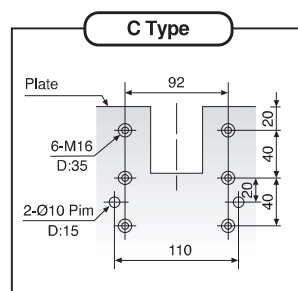
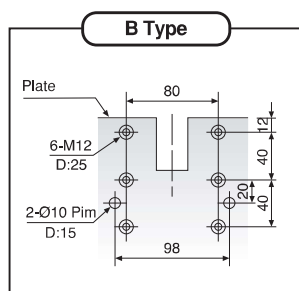
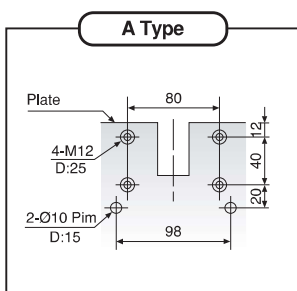
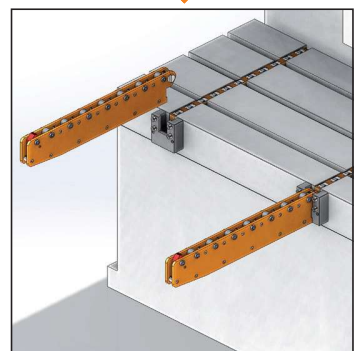
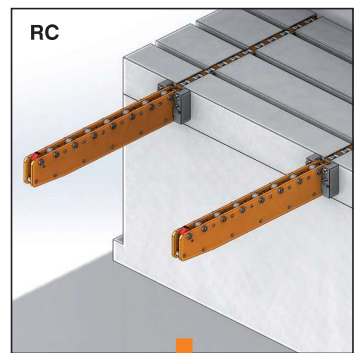
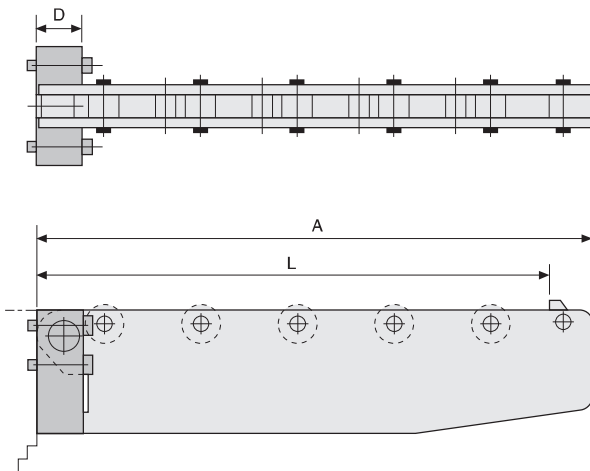
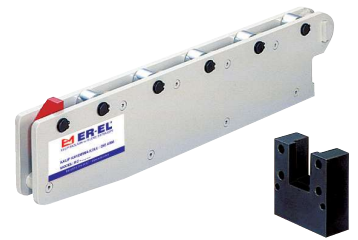


| Referenz-Nr. Order No. | Modell Stütze Model of Support | erforderliche Werkzeuglänge Length Needed of the Die L (mm) | Max. Kapazität Max. Capacity (kgf) | Gesamtlänge Total Length A (mm) | Maße Stütze Size of Support | | | Lochform für Montage Hole Pattern For Installation | Anzahl Zylinder Number of Roller |
|---------------------------|-----------------------------------|--|--|---------------------------------------|--------------------------------|-----|-----|---|-------------------------------------|
| | | | | | D | B | H | | |
| 1025-RC580 | RC-12 | 500 | 800 | 550 | 48 | 115 | 118 | A Type | 5 |
| 1025-RC760 | RC-12 | 700 | 600 | 750 | 48 | 115 | 118 | A Type | 7 |
| 1025-RC880 | RC-16 | 800 | 800 | 850 | 48 | 115 | 158 | B Type | 8 |
| 1025-RC990 | RC-20 | 900 | 900 | 950 | 48 | 115 | 188 | B Type | 9 |
| 1027-RC05125 | RC-14H | 500 | 1250 | 550 | 55 | 130 | 138 | C Type | 7 |
| 1027-RC05160 | RC-16H | 500 | 1600 | 550 | 55 | 130 | 158 | C Type | 7 |
| 1027-RC05200 | RC-18H | 500 | 2000 | 550 | 55 | 130 | 178 | C Type | 7 |
| 1027-RC07125 | RC-14H | 700 | 1250 | 750 | 55 | 130 | 138 | C Type | 9 |
| 1027-RC07160 | RC-16H | 700 | 1600 | 750 | 55 | 130 | 158 | C Type | 9 |
| 1027-RC07200 | RC-18H | 700 | 2000 | 750 | 55 | 130 | 178 | C Type | 9 |
| 1027-RC08125 | RC-16H | 800 | 1250 | 850 | 55 | 130 | 158 | C Type | 10 |
| 1027-RC08160 | RC-18H | 800 | 1600 | 850 | 55 | 130 | 178 | C Type | 10 |
| 1027-RC08200 | RC-20H | 800 | 2000 | 850 | 55 | 130 | 188 | C Type | 10 |
| 1027-RC09160 | RC-22H | 900 | 1600 | 950 | 55 | 130 | 218 | C Type | 11 |

1027

Modell / Model RC (Demontage / Dismantling)

- Arm und Stütze können separat verwendet werden
- The arm itself and the support in Model RC can be used separately.

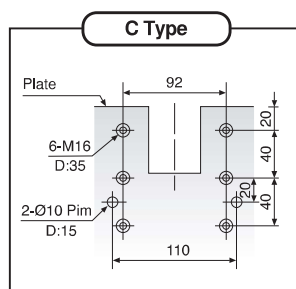
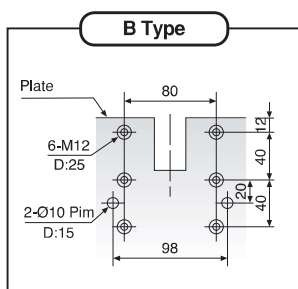
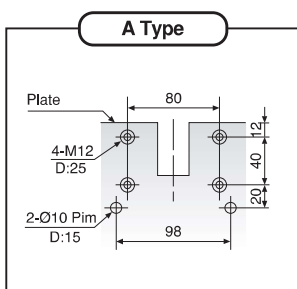
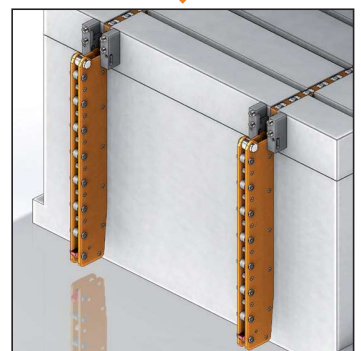
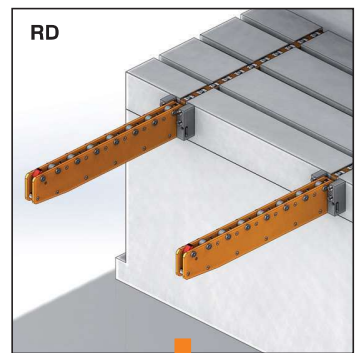
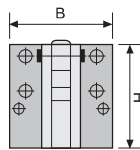
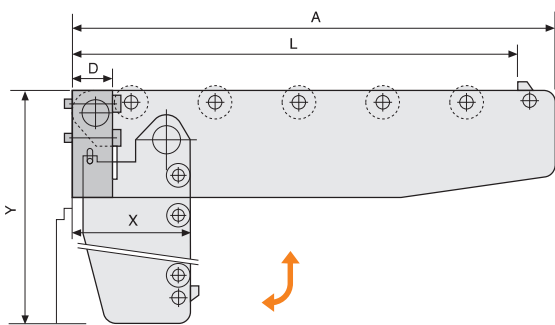


| Referenz-Nr. Order No. | erforderliche Werkzeuiglänge Length Needed of the Die L (mm) | Max. Kapazität Max. Capacity (kgf) | Gesamtlänge Total Length A (mm) | Hängemaße Size of Hanging | | Maße Stütze Size of Support | | | Lochform für Montage Hole Pattern For Installation | Anzahl Zylinder Number of Roller |
|---------------------------|---|--|---------------------------------------|------------------------------|------|--------------------------------|-----|-----|---|--|
| | | | | X | Y | D | B | H | | |
| 1030-RD580 | 500 | 800 | 550 | 140 | 620 | 52 | 115 | 118 | A Type | 5 |
| 1030-RD760 | 700 | 600 | 750 | 140 | 820 | 52 | 115 | 118 | A Type | 7 |
| 1030-RD880 | 800 | 800 | 850 | 180 | 960 | 52 | 115 | 158 | B Type | 8 |
| 1030-RD990 | 900 | 900 | 950 | 220 | 1100 | 52 | 115 | 188 | B Type | 9 |
| 1030-RD05125 | 500 | 1250 | 550 | 170 | 645 | 62 | 130 | 138 | C Type | 7 |
| 1030-RD05160 | 500 | 1600 | 550 | 190 | 670 | 62 | 130 | 158 | C Type | 7 |
| 1030-RD05200 | 500 | 2000 | 550 | 210 | 675 | 62 | 130 | 178 | C Type | 7 |
| 1030-RD07125 | 700 | 1250 | 750 | 170 | 840 | 62 | 130 | 138 | C Type | 9 |
| 1030-RD07160 | 700 | 1600 | 750 | 190 | 865 | 62 | 130 | 158 | C Type | 9 |
| 1030-RD07200 | 700 | 2000 | 750 | 210 | 890 | 62 | 130 | 178 | C Type | 9 |
| 1030-RD08125 | 800 | 1250 | 850 | 190 | 960 | 62 | 130 | 158 | C Type | 10 |
| 1030-RD08160 | 800 | 1600 | 850 | 210 | 985 | 62 | 130 | 178 | C Type | 10 |
| 1030-RD08200 | 800 | 2000 | 850 | 220 | 995 | 62 | 130 | 188 | C Type | 10 |
| 1030-RD09160 | 900 | 1600 | 950 | 250 | 1130 | 62 | 130 | 218 | C Type | 11 |

1030

Modell / Model RD (Hängend / Hanging)

- Hängelänge (Y) muss niedriger als das Maß zwischen Boden und Platte sein.
- The hanging length (Y) of Model RD should be less than the height between the plate and the ground



| Referenz-Nr. Order No. | erforderliche Werkzeuglänge Length Needed of the Die L (mm) | Max. Kapazität Max. Capacity (kgf) | Gesamtlänge Total Length A (mm) | erforderliche min. Distanz für Montage Min. Distance for Installation C (mm) | Dimensionen (zugeklappt) dimensions (folded) | | Maße Stütze Size of Support | | Anzahl Zylinder Number of Roller | M | N | Lochform für Montage Hole Pattern For Installation |
|---------------------------|--|--|---------------------------------------|---|--|-----|--------------------------------|-----|--|----|-----|---|
| | | | | | X | Y | B | H | | | | |
| 1033-RERF580 | 500 | 800 | 550 | 525 | 90 | 150 | 115 | 118 | 5 | 57 | 120 | A Type |
| 1033-RERF760 | 700 | 600 | 750 | 725 | 90 | 150 | 115 | 118 | 7 | 57 | 120 | A Type |
| 1033-RERF880 | 800 | 800 | 850 | 825 | 90 | 150 | 115 | 158 | 8 | 57 | 120 | B Type |
| 1033-RERF990 | 900 | 900 | 950 | 925 | 90 | 150 | 115 | 188 | 9 | 57 | 120 | B Type |

1033

- Klappbar nach rechts oder links

1033

- Itself can be turned left or right for storage.

| Referenz-Nr. Order No. | erforderliche Werkzeuglänge Length Needed of the Die L (mm) | Max. Kapazität Max. Capacity (kgf) | Gesamtlänge Total Length A (mm) | erforderliche min. Distanz für Montage Min. Distance for Installation C (mm) | Dimensionen (zugeklappt) dimensions (folded) | | Maße Stütze Size of Support | | Anzahl Zylinder Number of Roller | M | N | Lochform für Montage Hole Pattern For Installation |
|---------------------------|--|--|---------------------------------------|---|--|-----|--------------------------------|-----|--|----|-----|---|
| | | | | | X | Y | B | H | | | | |
| 1035-RERF05160 | 500 | 1600 | 550 | 525 | 105 | 170 | 130 | 158 | 7 | 74 | 140 | C Type |
| 1035-RERF05200 | 500 | 2000 | 550 | 525 | 105 | 170 | 130 | 178 | 7 | 74 | 140 | C Type |
| 1035-RERF07160 | 700 | 1600 | 750 | 725 | 105 | 170 | 130 | 158 | 9 | 74 | 140 | C Type |
| 1035-RERF07200 | 700 | 2000 | 750 | 725 | 105 | 170 | 130 | 178 | 9 | 74 | 140 | C Type |
| 1035-RERF08160 | 800 | 1600 | 850 | 825 | 105 | 170 | 130 | 178 | 10 | 74 | 140 | C Type |
| 1035-RERF08200 | 800 | 2000 | 850 | 825 | 105 | 170 | 130 | 188 | 10 | 74 | 140 | C Type |
| 1035-RERF09160 | 900 | 1600 | 950 | 925 | 105 | 170 | 130 | 218 | 11 | 74 | 140 | C Type |
| 1035-RERF09200 | 900 | 2000 | 950 | 925 | 105 | 170 | 130 | 248 | 11 | 74 | 140 | C Type |

1035

- Klappbar nach rechts oder links
- Die Distanz der Montage der Modelle RE und RF muss größer als das Maß C sein.

Product Nr. 1035 Die Arm Model RE-RF

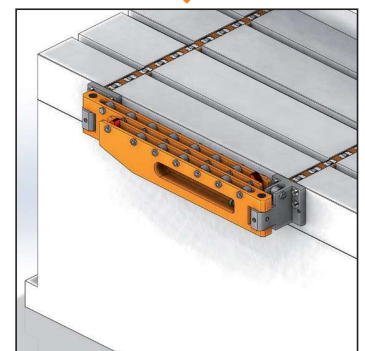
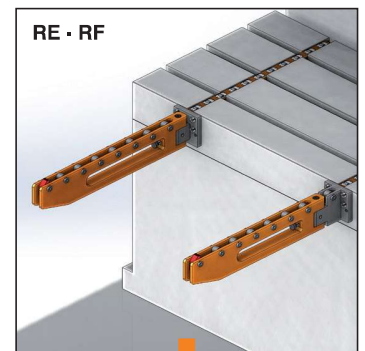
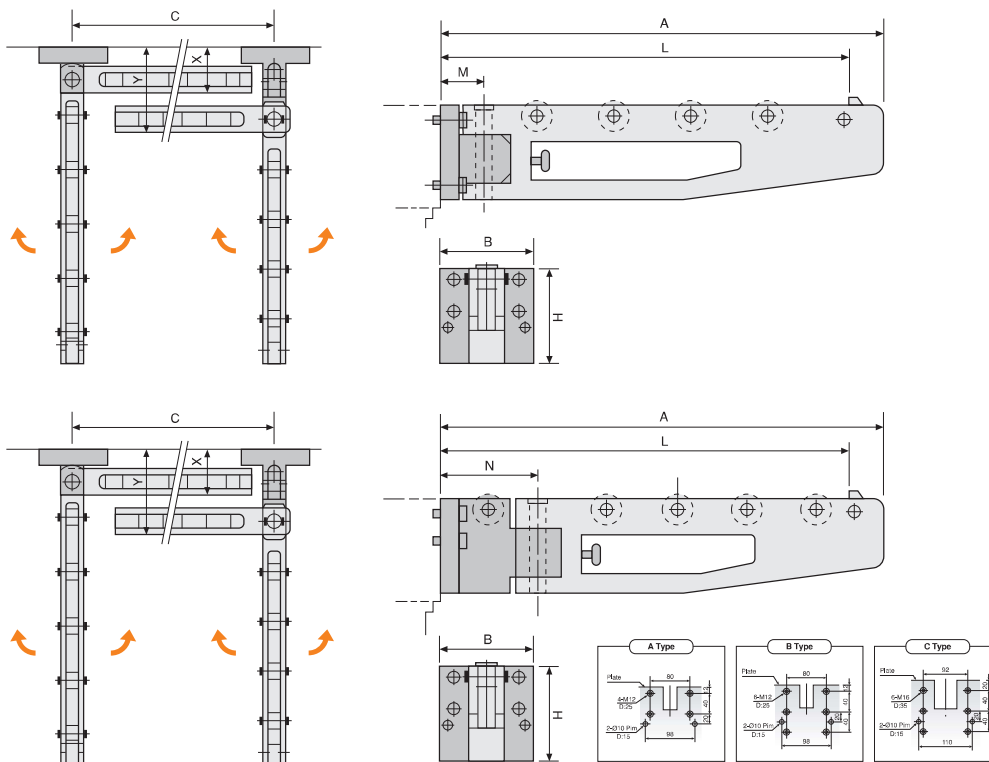
- Itself can be turned left or right for storage.
- The distance for installing the two arms of Model RE and RF should be more than the distance between the installations (C)



Modell RE Klappbar
Model RE Folding



Modell RF Klappbar
Model RF Folding

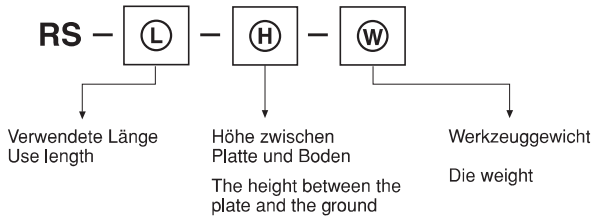


Modell / Model RS (Stütze / Supporter)

- Hinweis**
Projektbasierte Ausführung
- Note**
Project is special produce.

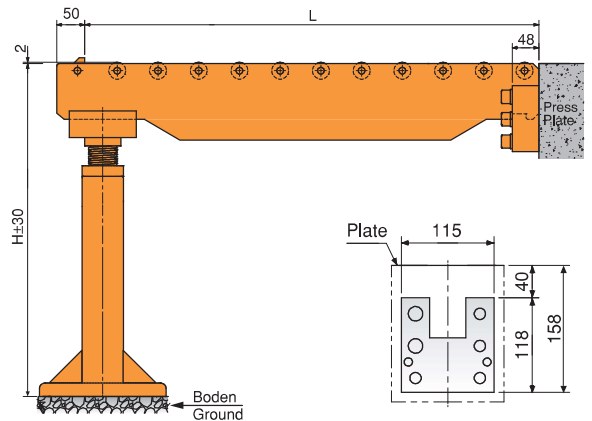


Modellauswahl / Model Selection

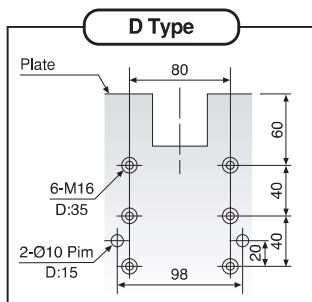


1037 Werkzeugschiebe-Konsole Modell RS (schweres Gewicht) 1037 Die Arm Model RS (Heavy Duty)

- Bei Bestellung bitte obige Werte angeben.
- Übernehmen Sie das Lochbild Typ (D) für die Installation.
- Please clearly indicate the above information while ordering.
- Adopt (D) type to install hole pattern.



LOCHSCHABLONEN HOLE PATTERN FOR INSTALLATION



Zubehör Accessories

Schlauchverbinder
Tube Connector
Referenz-Nr.
Order No.
1036-BT



Drehwirbel
Swivel
Referenz-Nr.
Order No.
1036-FD



Drehgelenk
Rotary Joint
Referenz-Nr.
Order No.
1036-DE



Spannbügel
Clamp Bracket
Referenz-Nr.
Order No.
1036-CACV



Spannbügel
Clamp Bracket
Referenz-Nr.
Order No.
1036-CB



Pumpenkabine
Pump Cabin
Referenz-Nr.
Order No.
1036-PK

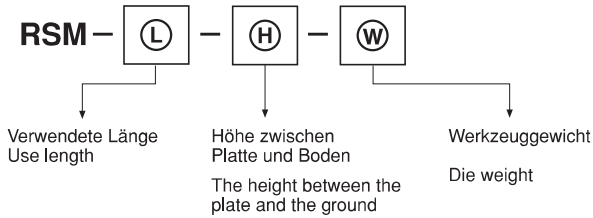


Modell / Model RSM (Stütze / Supporter)

- Not**
Projektbasierte Ausführung
- Note**
Project is special produce.

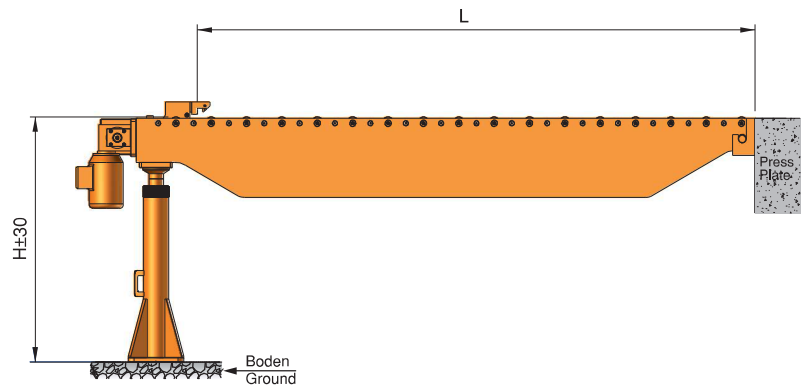



Modellauswahl / Model Selection



1038 Werkzeugschiebe-Konsole mit Motor Modell RSM 1038 Motor-Driven Die Arm Console Set - Model RSM (Heavy Duty)

- Bei Bestellung bitte obige Werte angeben.
- Pleasa cleary indicate the above information while ordering.



| Referenz-Nr. Order No. | L1 | L2 | H |  (kg) |
|---------------------------|-----|-----|-----|---|
| 1040-PB0801P1V | 250 | 225 | 367 | 15.55 |
| 1040-PB0801P2V | 310 | 285 | 367 | 18.55 |
| 1040-PB0801P3V | 428 | 403 | 367 | 21.50 |
| 1040-PB0801P4V | 487 | 462 | 367 | 24.70 |
| 1040-PC1201P3V | - | 397 | 367 | - |

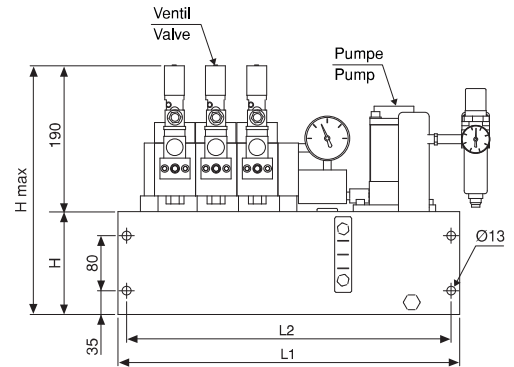
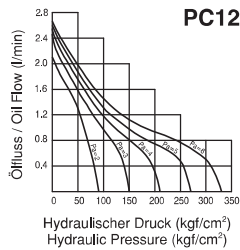
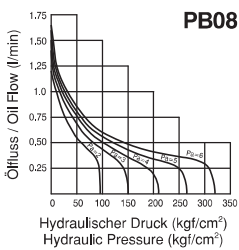


1040

- Wenn der hydraulische Druck den vorgegebenen Wert erreicht hat, wird die Pumpe ausgeschaltet, um Energie zu sparen. Auf der anderen Seite, wenn der Arbeitsdruck niedriger wird, wird der Luftdruck automatisch wiedergegeben.
- Der Steuerkreis prüft und verhindert evtl. Undichtheiten. Auch wenn der pneumatische Druck aussetzt, wird der hydraulische Druck aufrecht erhalten.
- Druckprüfung und Eigenschaft Spannen an die Maschinen ist vorhanden.
- Bei Anwendung mit CA und CB-16 oder 25 Spannsystem wird das Pumpenmodell PC12 empfohlen.
- Kapazität 500 max. bar
- Druckregelventil

1040

- The hydraulic pump is driven by air. Once the hydraulic pressure reaches the pressure setting, it stops pumping which is energy saving. Meanwhile, if the working pressure reduces, the pump would supply pressure automatically to keep working pressure continuously.
- The circuit control system is designed with the function of checking and avoiding oil leakage. If pneumatic pressure out, the hydraulic pressure still maintains.
- It is capable of pressure inspection and connecting to machines.
- It is suggested to adopt pump model PC12 when used with clamp model CA&CB-16 or 25.
- Capacity 400 max. bar
- Pressure control valve



| Referenz-Nr. Order No. | Schaltkreis Circuits |
|---------------------------|-------------------------|
| 1041-QDC01 | 1 |
| 1041-QDC02 | 2 |
| 1041-QDC03 | 3 |
| 1041-QDC04 | 4 |
| 1041-QMC04 | 4 |

1041

- QDC Presse Steuergerät
- QMC Spritzguss Steuergerät

1041

- QDC Press control unit
- QMC Injection control unit

Steuergerät

Control Unit



| Referenz-Nr. Order No. |
|---------------------------|
| 1041-PLCSMS |
| 1041-PLCGMT |

1041

- PLC Steuergerät Kategorie 4
- PLC Steuergerät

1041

- PLC Control Unit Category 4
- PLC Control Unit



PLC Steuergerät

PLC Control Unit



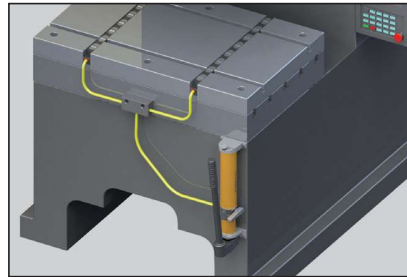
| |
|---------------------------|
| Referenz-Nr. Order No. |
| 1040-PB0101 |

1040

- Wird nur der Werkzeugheber benutzt, kann alternative eine hydraulische Handpumpe verwendet werden.
- 250 Bar

1040

- If only the die lifter is used, the usage of a manual hydraulic pump can alternatively be used.
- 250 Bar



alternatives System
Alternative Systems



Hydropneumatische Pumpe mit Fusspedal

Foot Pedal Hydropneumatic Pump

| Referenz-Nr. Order No. | Tankvolumen Working Pressure | Aktives Ölvolumen Reservoir Capacity | Pumpenausführung Usable Oil | Liter/min 50/700 bar lt./min. 50/700 bar | Luftdruck Air requirement min-max | Luftverbrauch Air Consumption | Betriebsdruck Pressure Rating | Ölanschluss Connection Thread | Gewicht inkl. Öl Weight incl. Oil | Maße Sizes mm |
|---------------------------|---------------------------------|---|--------------------------------|---|---|----------------------------------|----------------------------------|----------------------------------|--------------------------------------|------------------|
| 1040-PA0202 | 1500 cm ³ | 1000 cm ³ | Einstufig Single Stage | 600/110 cm ³ | 5-7 | 250 l/d | 50-700 | 3/8 NPT | 12 kg | 262x190x186 |

1040

- Fusspedal ermöglicht eine robuste Anwendung
- Fusspedal aktiviert das System mit 5-6 bar, das die Schieber mit Öl versorgt und entleert.
- Anwendung in unterschiedlichen Bereichen:
Hydraulische Zylinder, Werkzeugheber, Pressenbereiche



1040

- With foot pedal operation, hydro-pneumatic system makes it easier to use rigid.
- The foot pedal is operated with 5-6 bar in one movement and the system is activated and instead of manpower, it only serves to transfer oil to lifters.
- Hydropneumatic foot pumps producing 700 bar hydraulic oil pressure with minimum 5 bar air can be used in many different fields ; operating hydraulic cylinders, pullers, mold lifters and presses.

Elektrisches Hydraulik-Aggregat

Electric Hydraulic Pump Unit

| Referenz-Nr. Order No. | Ventil Valve | Durchfluss Flow | | bar |
|---------------------------|--------------|-----------------|---------|-----|
| | | (l/min) | (l/min) | |
| 1040-1P1VD | 1 | 6 | 14 | 100 |
| 1040-1P2VD | 2 | 6 | 14 | 100 |
| 1040-1P3VD | 3 | 6 | 14 | 100 |
| 1040-1P4VD | 4 | 6 | 14 | 100 |

1040

- Es ist für ein Direktanschluss-System geeignet.
- Bitte geben Sie vor dem Kauf die gewünschte Durchflussgeschwindigkeit (l/min) an.

1040

- It is suitable for direct connection system.
- Please, you specify about flow speed (l/minute) before make purchase.



| Referenz-Nr. Order No. | Maximaler Druck Maximum Pressure | Max. Arbeitsdruck Max Operation Pressure | Volumenstrom Hydraulic fluid expelled l/min | Öltank Oil Tank Capacity | Öl Oil |
|---------------------------|-------------------------------------|---|--|-----------------------------|-----------|
| 1040-06ABP | 36 | 6 Kg/cm ² | 16 | 5 lt | ISO-VG68 |
| 1040-10ABP | 60 | 6 Kg/cm ² | 10 | 5 lt | ISO-VG68 |
| 1040-25ABP | 150 | 6 Kg/cm ² | 5 | 5 lt | ISO-VG68 |
| 1040-44ABP | 250 | 6 Kg/cm ² | 3 | 5 lt | ISO-VG68 |

Hinweis

Geeignet für die Verwendung mit hydraulischen Komponenten
Spannungstypen : AC110V, AC220V, DC12V, DC24V

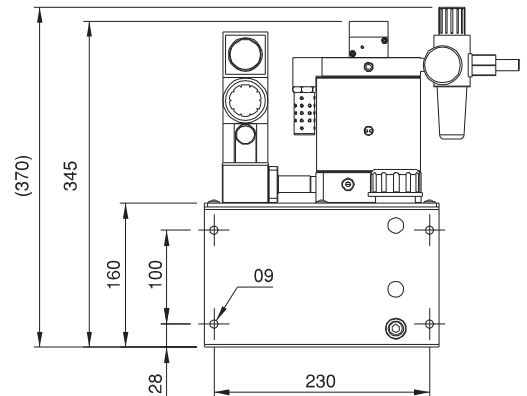
Note

Suitable for use with hydraulic components
Coil Type : AC110V, AC220V, DC12V, DC24V



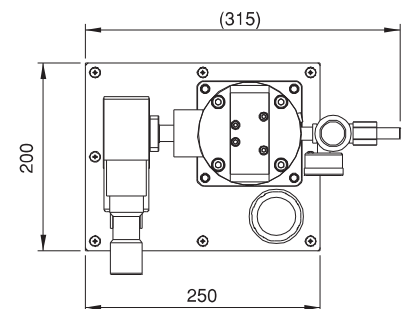
1040

- Die Druckerhöhungspumpe wird durch Luft angetrieben, um einen hydraulischen Druck für eine Kraftquelle für Hydraulikzylinder zu erzeugen. Die Fördermenge ist größer als bei einem herkömmlichen Booster. Kontinuierliche Druckverstärkung und keine Begrenzung des Verstärkerhubs für den arbeitenden Zylinder.
 - Die Druckeinstellung erfolgt über ein Luftdruckregelventil. Sobald der Druck den gewünschten Wert erreicht, stoppt der Antrieb sofort. Bei einem Druckabfall gleicht die Pumpe den Druck automatisch aus. Die Baureihe eignet sich besonders für den Einsatz im Bereich der hydraulischen Langzeitspannung. Außerdem ist sie energiesparend, ohne Öltemperaturerhöhung, wirtschaftlich und komfortabel.
 - Bei Einsatz der Doppelpumpe kann das Druckverhältnis gewählt werden. Es ist besonders geeignet für Vorrichtungen, die Hoch- und Niederdruckbetrieb zusammen erfordern.
- Typ A:** Ausgestattet mit ISO-geprüftem Verteiler und Magnetventil. Anwendbar für einfach oder doppelt wirkende Hydraulikzylinder. Ausgestattet mit HDV Richtungssteuerungswert zur Verbesserung der internen Leckage. Leckageproblem zu verbessern und die Lebensdauer der Luftpumpe zu gewährleisten.
- Typ B:** Ausgestattet mit einem Rohrblock mit PT-Anschlüssen für den Anschluss an ein manuelles Drehventil zur Betriebssteuerung.
- Reduziertes Öltankvolumen für Platzersparnis und bequeme Installation

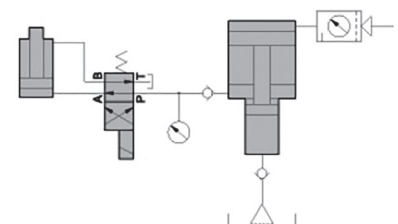


1040

- The booster pump is driven by air to output hydraulic pressure for a power source for hydraulic cylinder. Its flow rate is bigger than than of a conventional booter. Continuous pressure boosting and no limitation of booster stroke for the acting cylinder.
 - Pressure adjustment is made by an air pressure regulation valve. Once pressure reaches the desired value drive stops immediately. In case pressure drops the pump will compensate pressure automatically. The series is especially ideal for long time hydraulic clamping application. Also features energy saving no oil temperature growth economical and convenient.
 - When double-pump is applied you can select the boost pressure ratio. It is especially suitable for jig and fixture which requires high and low pressure operation together.
- A Type:** Equipped with ISO approved manifold and solenoid valve. Applicable for single-acting or double-acting hydraulic cylinder. Equipped with HDV direction control valve to improve internal leakage problem and ensure the service life of air pump.
- B Type:** Equipped with pipe block with PT ports permitting for connecting to a manual contort valve for operation control.
- Reduced oil tank volume for space saving and convenient installation



Hydraulikschemata
Circuit Diagram



| Referenz-Nr. Order No. | Verstärkter Druck Multiple Boost | Hochdruck Output High Pressure Output | A | B | C | ØD | E1 | E2 | F1 | F2 | F3 | H | ØK | ØM | N | PT |
|---------------------------|-------------------------------------|--|-----|-----|----|----|----|----|----|----|----|---|----|----|----|-------|
| 1040-HB0906 | 9 | 6cc | 157 | 107 | 50 | 46 | 58 | 72 | 43 | 56 | 55 | 7 | 7 | 11 | 71 | PT1/4 |
| 1040-HB0510 | 5 | 10cc | 157 | 107 | 50 | 46 | 58 | 72 | 43 | 56 | 55 | 7 | 7 | 11 | 71 | PT1/4 |
| 1040-HB3515 | 3.5 | 15cc | 157 | 107 | 50 | 46 | 58 | 72 | 43 | 56 | 55 | 7 | 7 | 11 | 71 | PT1/4 |
| 1040-HB0822 | 8 | 22cc | 210 | 139 | 71 | 58 | 82 | 95 | 62 | 80 | 70 | 9 | 9 | 14 | 96 | PT1/4 |
| 1040-HB0535 | 5 | 35cc | 210 | 139 | 71 | 58 | 82 | 95 | 62 | 80 | 70 | 9 | 9 | 14 | 96 | PT1/4 |
| 1040-HB3845 | 3.8 | 45cc | 210 | 139 | 71 | 58 | 82 | 95 | 62 | 80 | 70 | 9 | 9 | 14 | 96 | PT1/4 |



| | | | | | | | |
|--------------------------------------|----|----|----|----|----|----|----|
| M6 Höhe L mm M6 Length L mm | 7 | 6 | 5 | 4 | 3 | 2 | 1 |
| Anfangsdruck Start Pressure kg/cm | 20 | 25 | 30 | 35 | 40 | 45 | 50 |

Betriebsdruck
Max. Operation pressure 50kg/cm

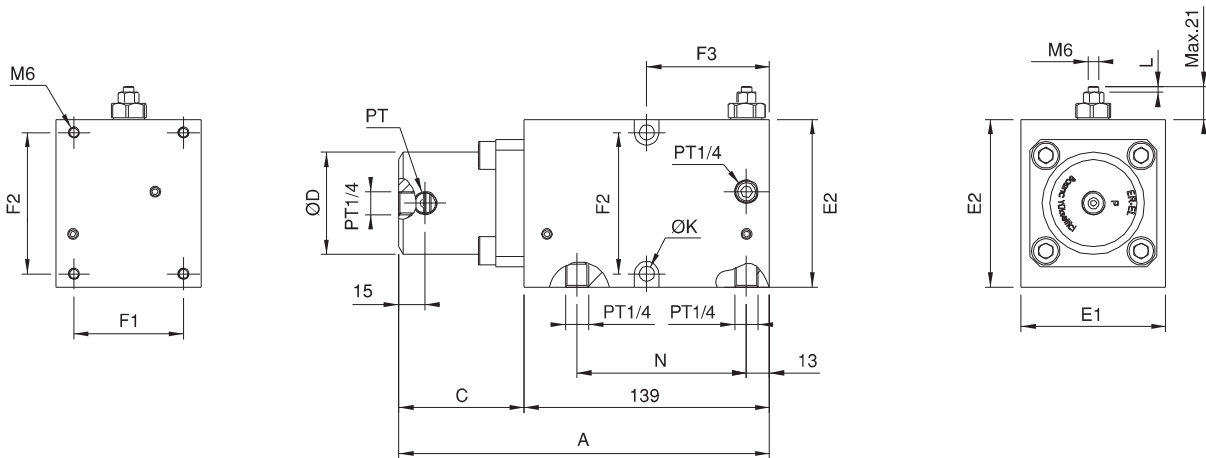
Eingestellter Druck 30kg/cm
Pressure set at 30kg/cm

1040

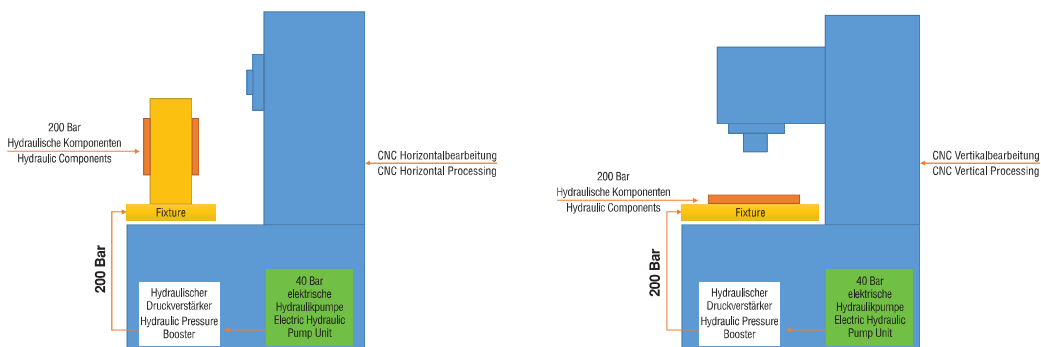
- An diese Einheit ist ein hydraulisch sequenzielles Ventil angeschlossen. Im Betrieb kann in das Zylinder Öl geführt, ermöglicht dualen Druck, aktiviert das sequenzielle Ventil und verstärkt den Druck mehrfach.
- Es ist geeignet für spezielle hydraulische Maschine und MC-Klemme in Niederdruck.
Ein Magnetventil muss montiert werden und man kann den HB Schnell-Lader verwenden.
Der Schnell-Lader wandelt den Öl-Niederdruck in Öl-Hochdruck automatisch und ermöglicht somit das Spannen im Hochdruck.

1040

- A hydraulic sequential valve is attached to the structure of this unit. When operating, it may oil to cylinder and makes it be at the dual pressure and let the sequential valve act and then it will provide multiple boosting pressure.
- It's fit for hydraulic special purpose machine and MC clamp in low pressure circuit. It needs a solenoid valve installed in the circuit and then it will be able to operate HB super-charger. The super-charger may be converted automatically from low oil-pressure to high oil-pressure and obtain a high pressure clamping.

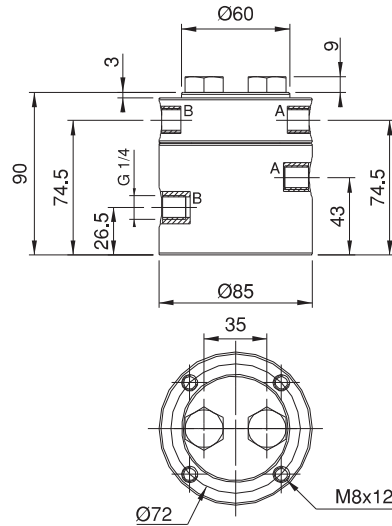
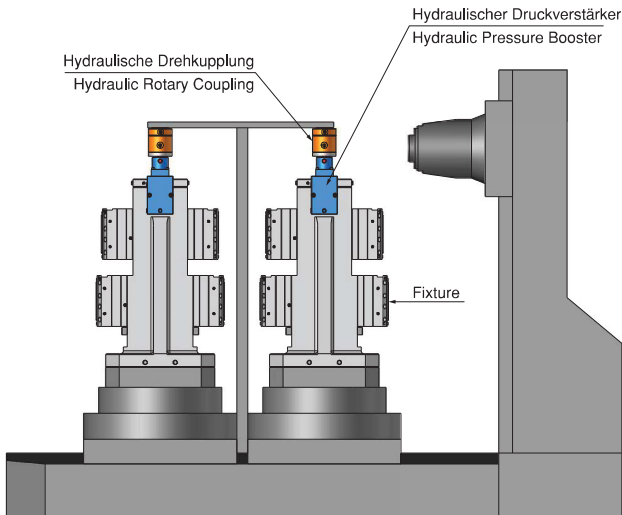


Anwendungsbeispiel / Application Example



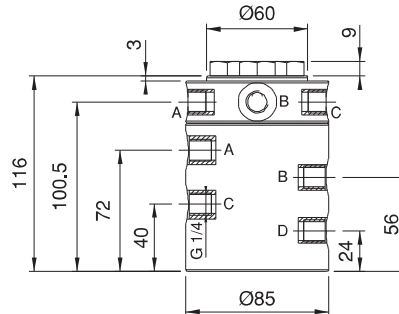
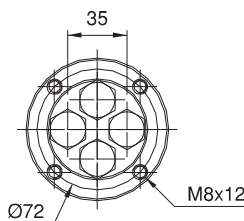
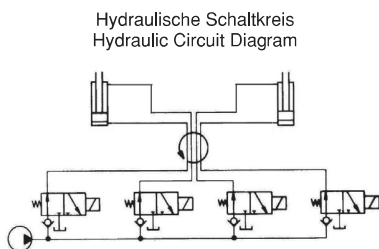
| Referenz-Nr. Order No. | Anzahl der Ausgänge Number of Outlets | Geschwindigkeit Speed | Max. bar | Δ (kg) |
|---------------------------|--|--------------------------|----------|---------------|
| 1040-02 | 2 | 5.0 m/sn | 300 | 2.3 |

1040



| Referans Nr. | Anzahl der Ausgänge Number of Outlets | Geschwindigkeit Speed | Max. bar | Δ (kg) |
|--------------|--|--------------------------|----------|---------------|
| 1040-04 | 4 | 5.0 m/sn | 300 | 2.8 |

1040



| Referans Nr. | Anzahl der Ausgänge Number of Outlets | Geschwindigkeit Speed | Max. bar | Δ (kg) |
|--------------|--|--------------------------|----------|---------------|
| 1040-06 | 6 | 5.0 m/sn | 300 | 4.2 |

1040

