

5-Achs Basismodul

5-Axis Clamping Block

Kombination

- Modulare Montagemöglichkeiten und 5-Seiten Bearbeitung auf CNC Horizontal-Bearbeitungszentren, CNC-Vertikal-Bearbeitungszentren, CNC-5-Achsen Maschinen mit "T" Nut und Rasterplatten verwendet.

Combination

- Its modular assembly and 5 edge ability, it can be used on CNC Horizontal, CNC Vertical CNC 5 Axis machines with T-Slots and rasterized plates.

Eigenschaften

- Bedienungsfreundlichkeit bei 5-Seiten Bearbeitung
- Erweiterbare Funktionalität
- Variable Montagemöglichkeiten
- wiederholbare Präzision bei Massenproduktion
- Hohe Spannkraft

Features

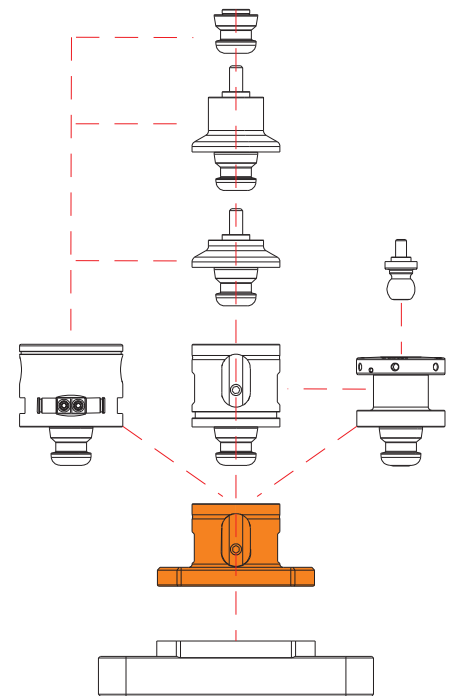
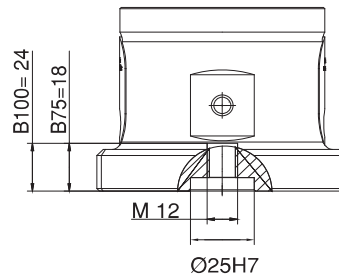
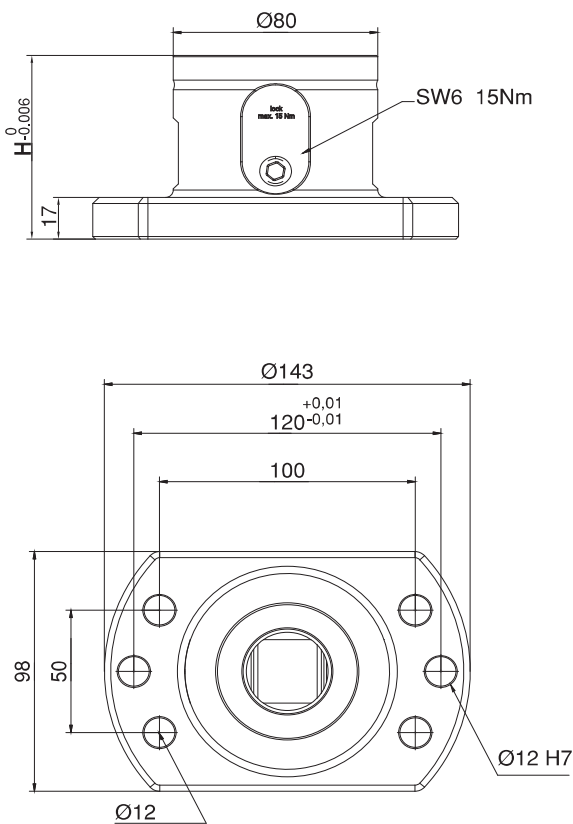
- Ease at 5 axis operations
- Height adjusting feature
- Variable fixing possibility
- Repeating precision at mass production
- High clamping force





Referenz-Nr. Order No.	Technische Daten / Specifications	
0900-UL800010	Durchmesser: 80mm Höhe: 75mm Haltekraft (M10): 3500 kgf Haltekraft (M12): 5000 kgf Wiederholgenauigkeit: <0.005 mm Gewicht: 3.65 kg	Diameter: 80mm Height: 75mm Retention force (M10): 3500 kgf Retention force (M12): 5000 kgf Repeatability: <0.005 mm Weight: 3.65 kg
0900-UL800012	Durchmesser: 80mm Höhe: 100mm Haltekraft (M10): 3500 kgf Haltekraft (M12): 5000 kgf Wiederholgenauigkeit: <0.005 mm Gewicht: 4.55 kg	Diameter: 80mm Height: 100mm Retention force (M10): 3500 kgf Retention force (M12): 5000 kgf Repeatability: <0.005 mm Weight: 4.45 kg

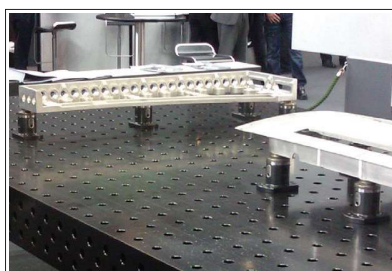
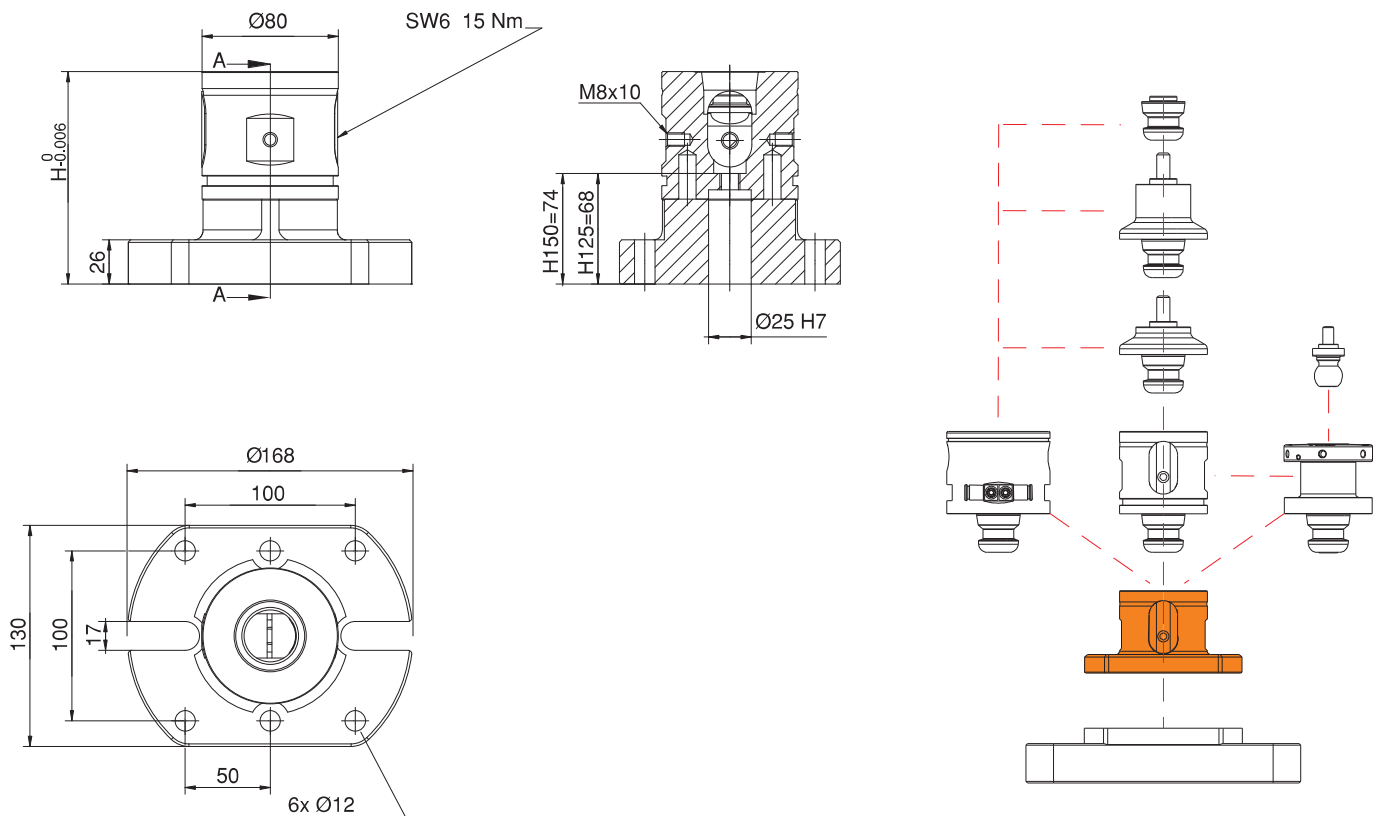
0900



Referenz-Nr. Order No.	Technische Daten / Specifications	
0900-UL800018	Durchmesser: 80mm Höhe (H): 125 mm Haltekraft (M10): 3500 kgf Haltekraft (M12): 5000 kgf Wiederholgenauigkeit: <0.005 mm Gewicht: 6.65 kg	Diameter: 80mm Height (H): 125mm Retention force (M10): 3500 kgf Retention force (M12): 5000 kgf Repeatability: <0.005 mm Weight: 6.65 kg
0900-UL800019	Durchmesser: 80mm Höhe (H): 150 mm Haltekraft (M10): 3500 kgf Haltekraft (M12): 5000 kgf Wiederholgenauigkeit: <0.005 mm Gewicht: 7.60 kg	Diameter: 80mm Height (H): 150mm Retention force (M10): 3500 kgf Retention force (M12): 5000 kgf Repeatability: <0.005 mm Weight: 7.60 kg
0900-UL800020	Durchmesser: 80mm Höhe (H): 175 mm Haltekraft (M10): 3500 kgf Haltekraft (M12): 5000 kgf Wiederholgenauigkeit: <0.005 mm Gewicht: 8.45 kg	Diameter: 80mm Height (H): 175mm Retention force (M10): 3500 kgf Retention force (M12): 5000 kgf Repeatability: <0.005 mm Weight: 8.45 kg



0900



Referenz-Nr. Order No.	Technische Daten / Specifications	
0900-UL800030	Durchmesser: 80mm Höhe (H): 75 mm Haltekraft (M10): 3500 kgf Haltekraft (M12): 5000 kgf Wiederholgenauigkeit: <0.005 mm Gewicht: 2.85 kg	Diameter: 80mm Height (H): 75mm Retention force (M10): 3500 kgf Retention force (M12): 5000 kgf Repeatability: <0.005 mm Weight: 2.85 kg
0900-UL800031	Durchmesser: 80mm Höhe (H): 100 mm Haltekraft (M10): 3500 kgf Haltekraft (M12): 5000 kgf Wiederholgenauigkeit: <0.005 mm Gewicht: 3.65 kg	Diameter: 80mm Height (H): 100mm Retention force (M10): 3500 kgf Retention force (M12): 5000 kgf Repeatability: <0.005 mm Weight: 3.65 kg
0900-UL800032	Durchmesser: 80mm Höhe (H): 125 mm Haltekraft (M10): 3500 kgf Haltekraft (M12): 5000 kgf Wiederholgenauigkeit: <0.005 mm Gewicht: 4.70 kg	Diameter: 80mm Height (H): 125mm Retention force (M10): 3500 kgf Retention force (M12): 5000 kgf Repeatability: <0.005 mm Weight: 4.70 kg

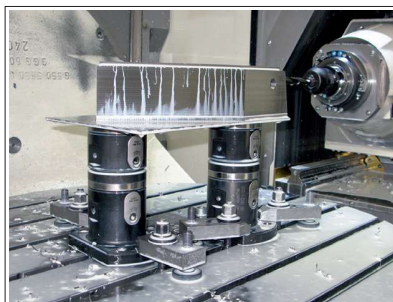
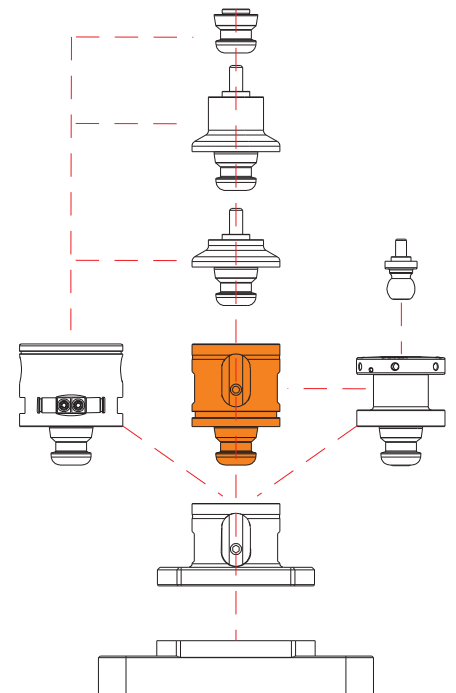
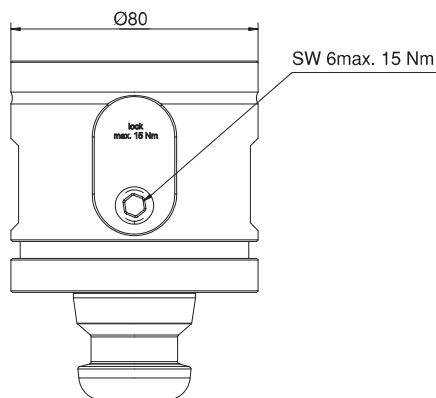
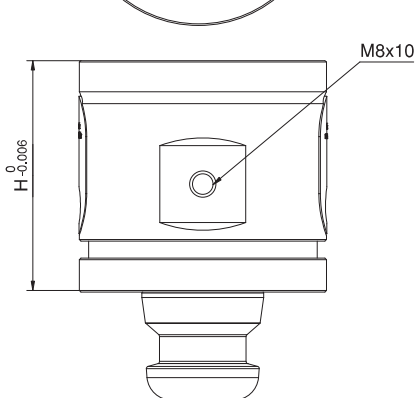
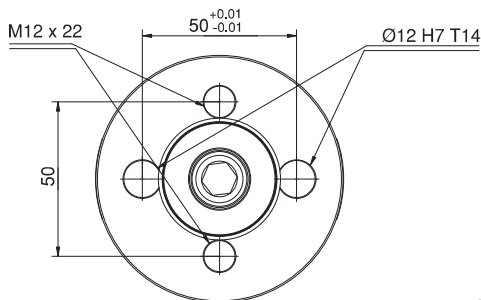


0900

- Anwendungshöhe: 75mm, 100 mm, 125mm
- Ermöglicht die Verwendung von bis zu 1m Aufrüstung.

0900

- 75mm, 100mm and 125 mm in height can be used.
- Allows the use of up to 1m upgrade.



Referenz-Nr. Order No.	Technische Daten / Specifications	
0900-UL800033	Durchmesser: 80mm Höhe (H): 75 mm Haltekraft (M10): 3500 kgf Haltekraft (M12): 5000 kgf Wiederholgenauigkeit: <0.005 mm Gewicht: 3.30 kg	Diameter: 80mm Height: 75mm Retention force (M10): 3500 kgf Retention force (M12): 5000 kgf Repeatability: <0.005 mm Weight: 3.30 kg

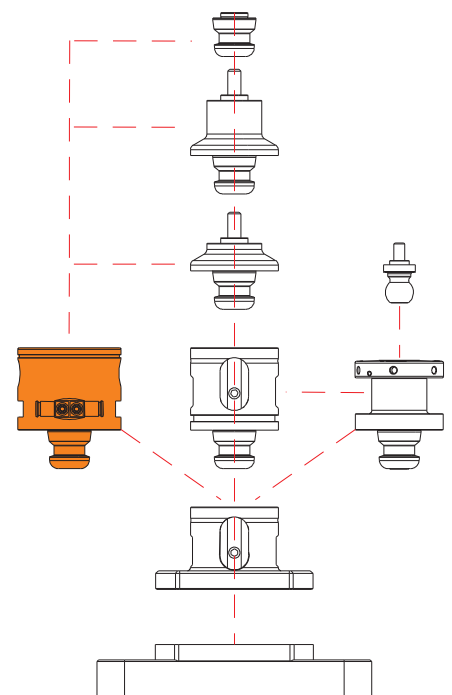
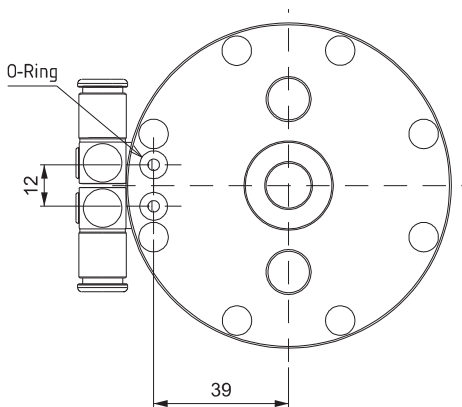
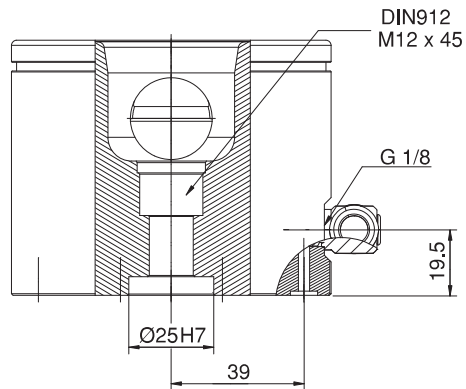
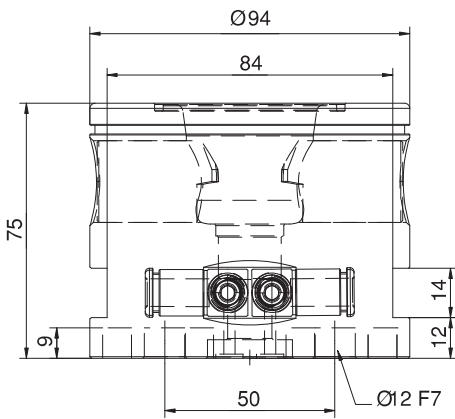


0900

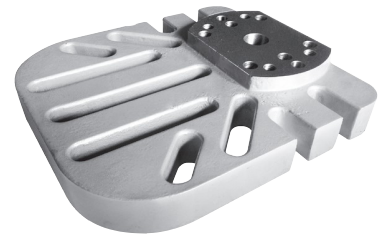
- pneumatisches Öffnen und Schließen bei Massenproduktion

0900

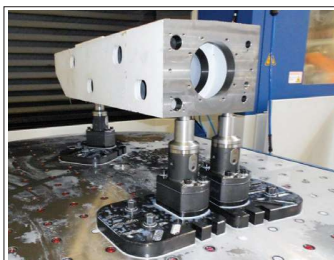
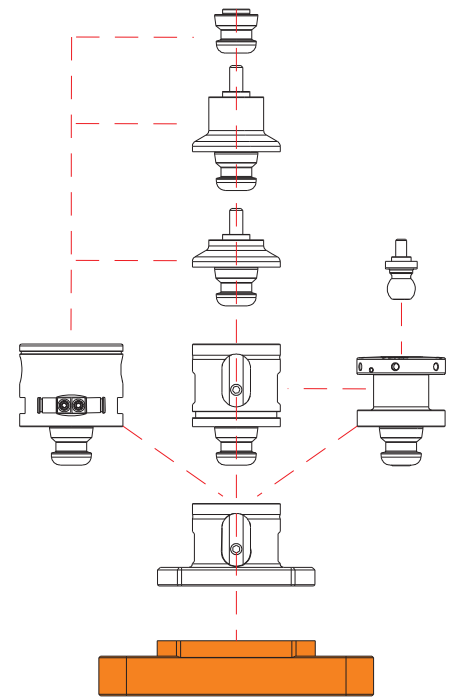
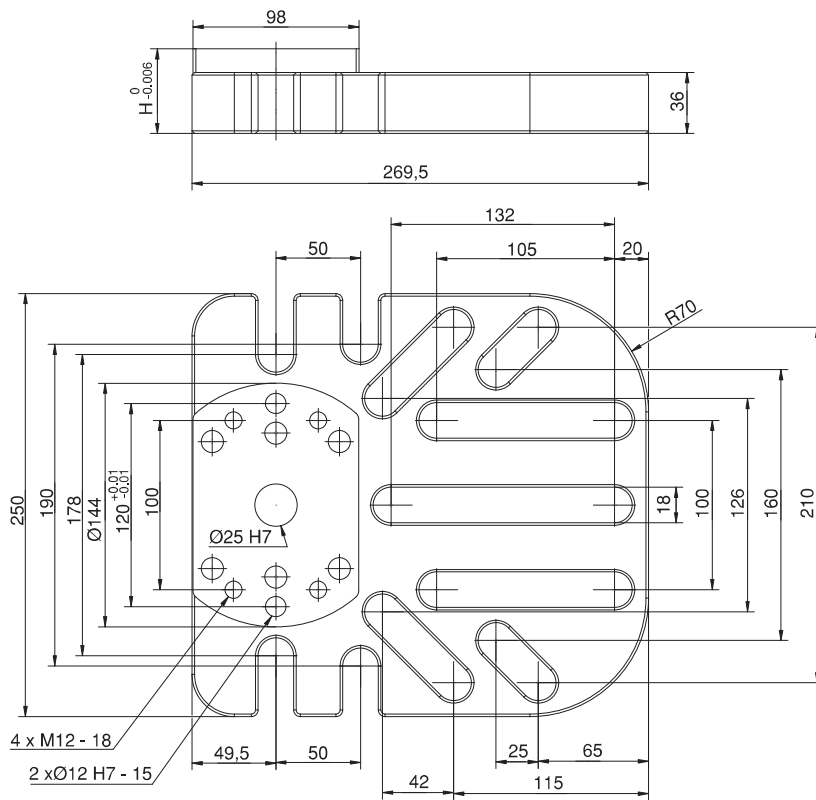
- Pneumatic opening and closing at mass production



Referenz-Nr. Order No.	Technische Daten / Specifications	
0900-UL800055	Höhe (H): 50 mm Länge: 250mm Breite: 270mm Gewicht: 14.20 kg	Height (H): 50mm Length: 250mm Width: 270mm Weight: 14.20 kg
0900-UL800056	Höhe (H): 100 mm Länge: 250mm Breite: 270mm Gewicht: 18.70 kg	Height (H): 100mm Length: 250mm Width: 270mm Weight: 18.70 kg
0900-UL800057	Höhe (H): 150 mm Länge: 250mm Breite: 270mm Gewicht: 21.20 kg	Height (H): 150mm Length: 250mm Width: 270mm Weight: 21.20 kg



0900



Referenz-Nr. Order No.	Technische Daten / Specifications	
0900-UL800126	1x SBC 40-25-5-16, 1x Befestigungsschraube M12x100mm Gewicht: 0.875 kg	1x SBC 40-25-5-16, 1x mounting screw M12x100mm Weight: 0.875 kg
0900-UL800123	1x SBC 40-25-5-16, 1x Befestigungsschraube M12x75mm Gewicht: 0.875 kg	1x SBC 40-25-5-16, 1x mounting screw M12x75mm Weight: 0.875 kg
0900-UL800120	1x SBC 40-25-5-12, 1x Befestigungsschraube M10x100mm Gewicht: 0.875 kg	1x SBC 40-25-5-12, 1x mounting screw M10x100mm Weight: 0.875 kg
0900-UL800117	1x SBC 40-25-5-12, 1x Befestigungsschraube M10x75mm Gewicht: 0.875 kg	1x SBC 40-25-5-12, 1x mounting screw M10x75mm Weight: 0.875 kg

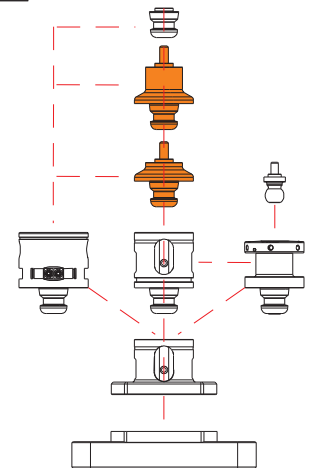
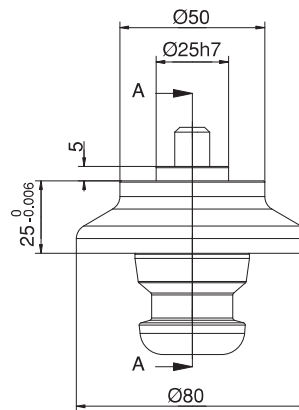
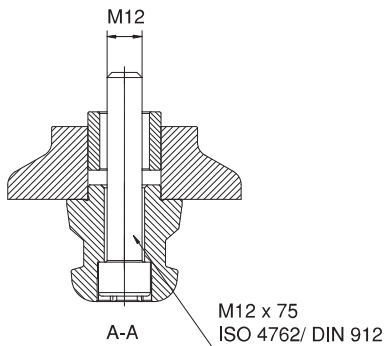


0900

- Um Deformationen des Werkstücks zu verhindern.

0900

- To prevent deformations of the workpiece.



5-Achs Reduktion inkl.

5-Axis Clamping Block Intermediary Part (Hard)

Referenz-Nr. Order No.	Technische Daten / Specifications	
0900-UL800111	1x SBC 40-25-5-16, 1x Befestigungsschraube M12x100mm Gewicht: 1.180 kg	1x SBC 40-25-5-16, 1x mounting screw M12x100mm Weight: 1.180 kg
0900-UL800108	1x SBC 40-25-5-16, 1x Befestigungsschraube M12x75mm Gewicht: 1.180 kg	1x SBC 40-25-5-16, 1x mounting screw M12x75mm Weight: 1.180 kg
0900-UL800105	1x SBC 40-25-5-16, 1x Befestigungsschraube M10x100mm Gewicht: 1.180 kg	1x SBC 40-25-5-12, 1x mounting screw M10x100mm Weight: 1.180 kg
0900-UL800102	1x SBC 40-25-5-16, 1x Befestigungsschraube M10x75mm Gewicht: 1.180 kg	1x SBC 40-25-5-12, 1x mounting screw M10x75mm Weight: 1.180 kg

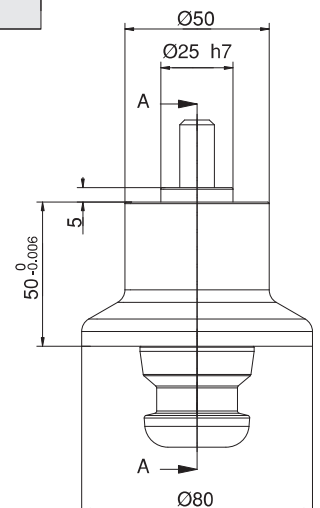
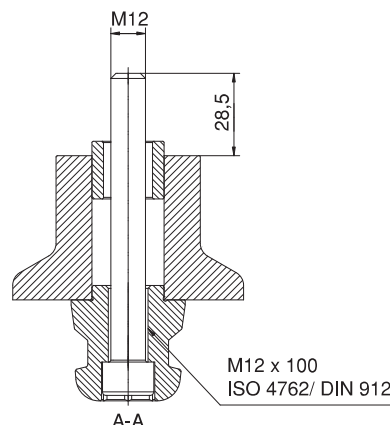



0900

- Um eine Änderung der Wechselgenauigkeit zu verhindern.

0900

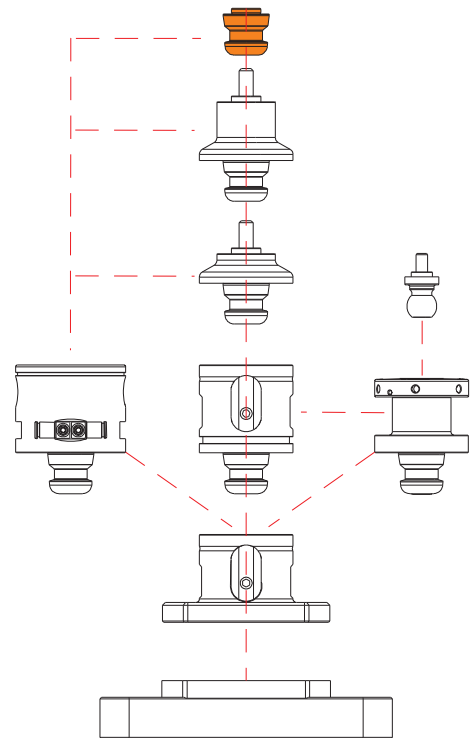
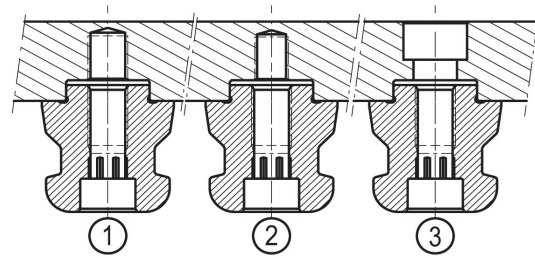
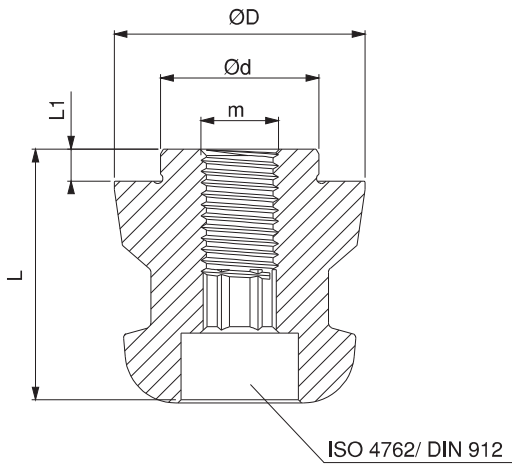
- To prevent change of repeating precision.



Referenz-Nr. Order No.	Spezifikationen Description	L x ØD	Ød	L1	m	 (kg)
0900-UL500115	SBC	40	25h6	5	12	0.200
0900-UL500118	SBC	40	25h6	5	16	0.200
0900-UL500121	SBC	40	25h6	5	20	0.200



0900



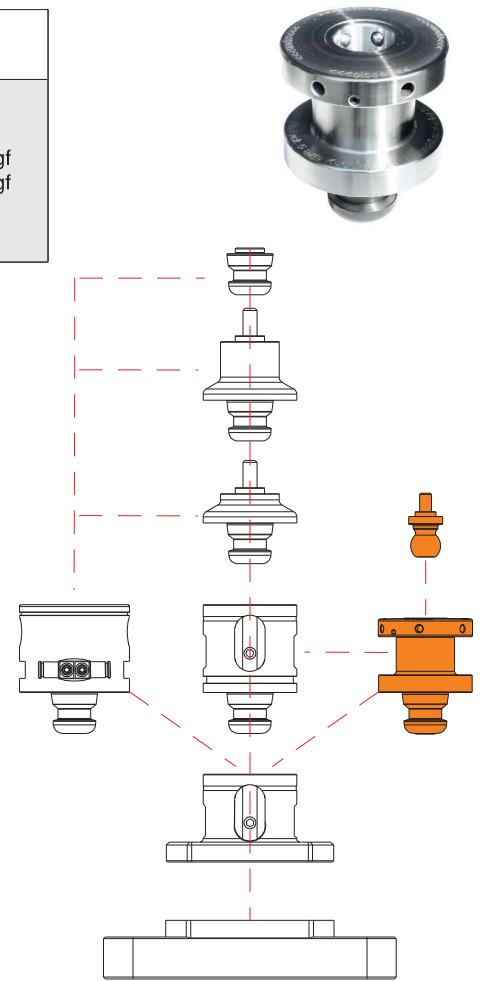
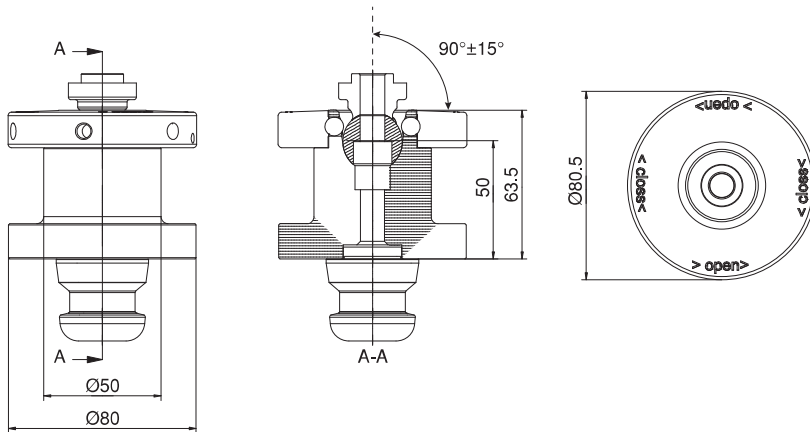
Referenz-Nr. Order No.	Technische Daten / Specifications	
0900-UL800360	Durchmesser: 80mm Höhe : 63,50 mm Haltekraft (M10): 3500 kgf Haltekraft (M12): 5000 kgf Wiederholgenauigkeit: <0.005 mm Gewicht: 1.90 kg	Diameter: 80 mm Height: 63,50 mm Retention force (M10): 3500 kgf Retention force (M12): 5000 kgf Repeatability: <0.005mm Weight: 1.90 kg

0900

- Ermöglicht Werkstücke mit bis zu 15° Schräge zu klemmen.
- Mindestens drei Klemmstellen auf dem Werkstück sind erforderlich.

0900

- Enables to clamp inclined workpieces with up to 15°
- At least three clamping points on the workpiece are required.



5-Achs FLEX Spannkugel inkl.

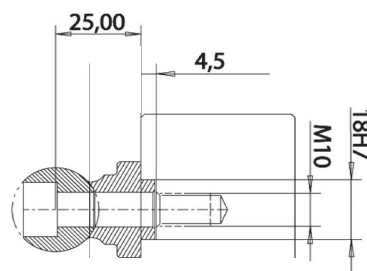
Referenz-Nr. Order No.	Technische Daten / Specifications	
0900-UL800382	Kugeldurchmesser: 25,4 mm inkl. Zentrierungsdeckel 15° Ausgleichsbereich Gewicht: 0.10 kg	Diameter head / head diameter: 25.4 mm included centering cover 15° working weight: 0.10 kg

0900

- 15° maximaler Winkelabstand

0900

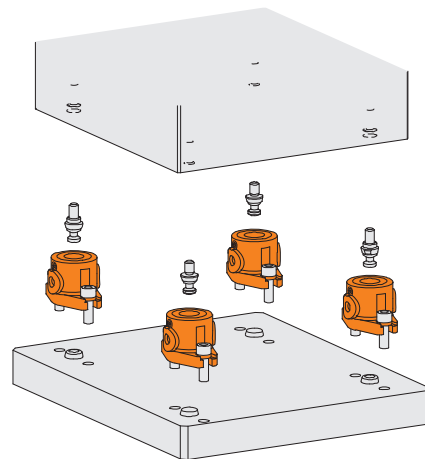
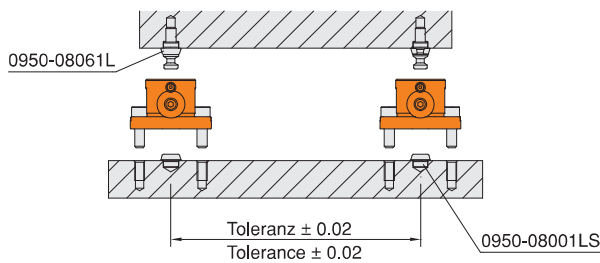
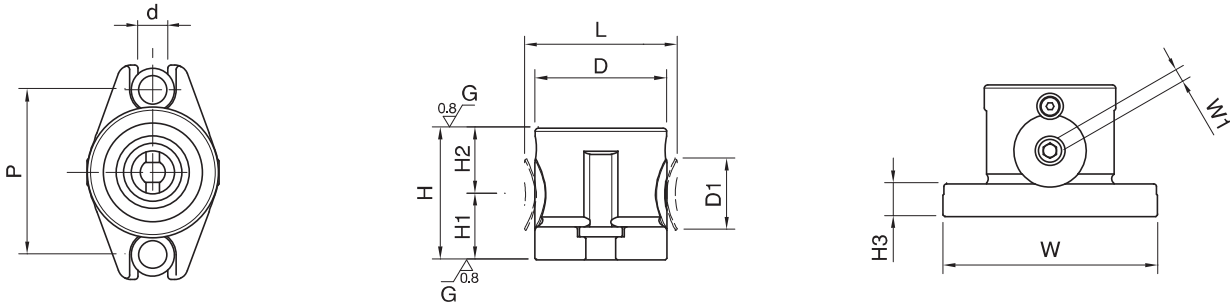
- 15° maximum angular space



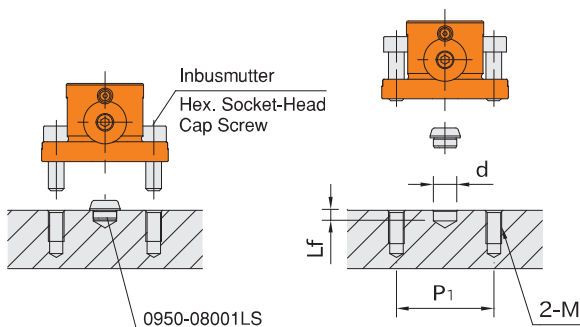


Referenz-Nr. Order No.Nr.	D	H (±0.01)	D1	L	H1	H2	W	H3	d	P	W1	Spannkraft Clamping Force KgF	zulässiges Drehmoment Allowable Screw Torque (N-m)	(g)
0950-06025	30	25	15	34.5	12.5	12.5	54	7	6.6	42	3	500	4	100
0950-08040	40	40	22	46	20	20	65	10	9	50	4	800	8	300
0950-12063	60	63	32	69	33	30	95	15	13	75	6	1500	22	1400
0950-16080	80	80	44	91	40	40	130	20	17	130	8	2500	50	3300

0950



Anwendungsbeispiel / Application Examples

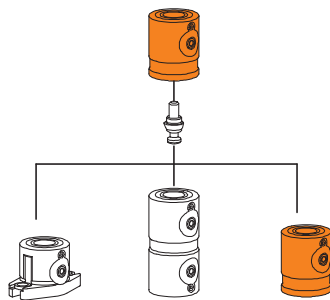
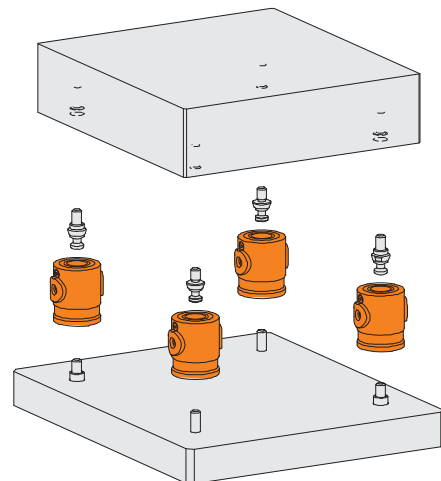
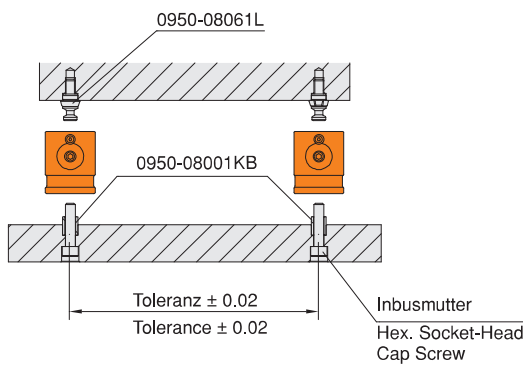
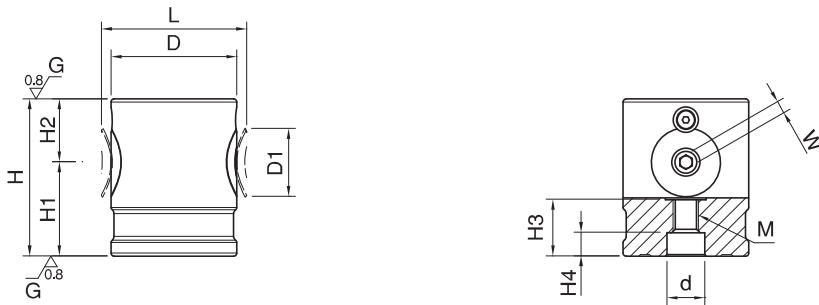


Referenz-Nr. Order No.	d (H7)	Lf	M	P1
0950-06025	8	5.5	M6	42
0950-08040	12	5.5	M8	50
0950-12063	18	6.5	M12	75
0950-16080	22	8	M16	100

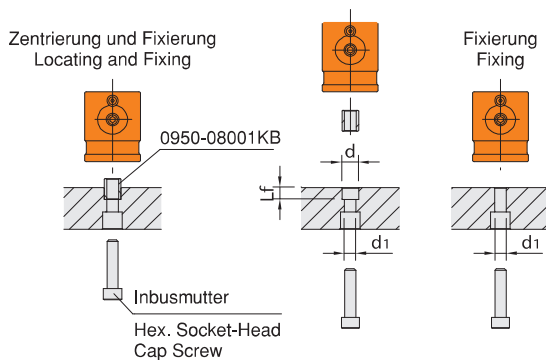


Referenz-Nr. Order No.	D	H (±0.01)	D1	L	H1	H2	H3	d (H7)	H4	M	W	Spannkraft Clamping Force Kgf	zulässiges Drehmoment Allowable Screw Torque (N-m)	 (g)
0950-06032	30	32	15	34.5	19.5	12.5	11.5	8	5	M6	3	500	4	200
0950-08050	40	50	22	46	30	20	18	12	7.5	M8	4	800	8	500
0950-12080	60	80	32	69	50	30	25	18	10.5	M12	6	1500	22	1600
0950-16100	80	100	44	91	60	40	31	22	12.5	M16	8	2500	50	3800

0950



Anwendungsbeispiel / Application Examples

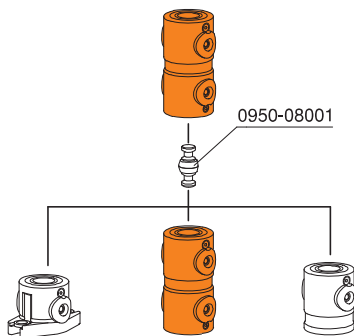
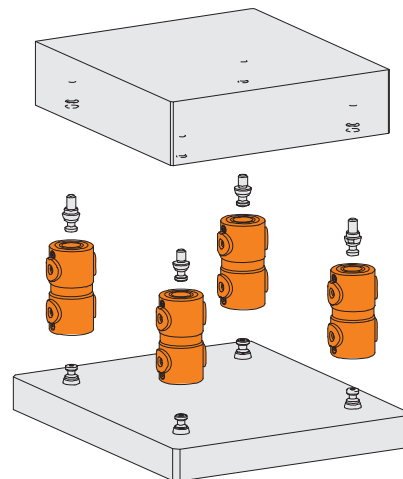
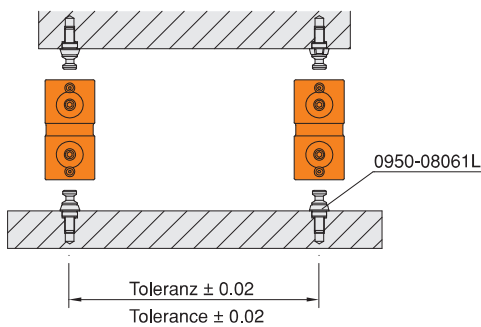
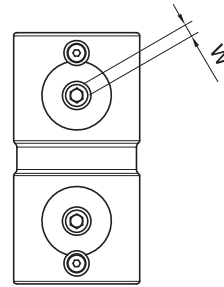
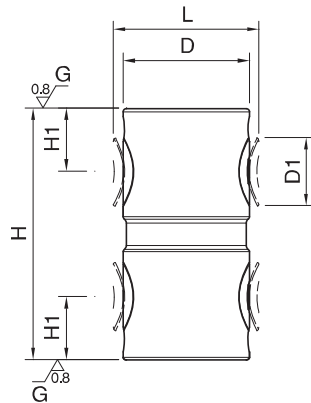


Referenz-Nr. Order No.	d (H7)	Lf	d1 (+0.2 0)
0950-06032	8	6.5	6
0950-08050	12	8.5	8
0950-12080	18	12.5	12
0950-16100	22	16.5	16

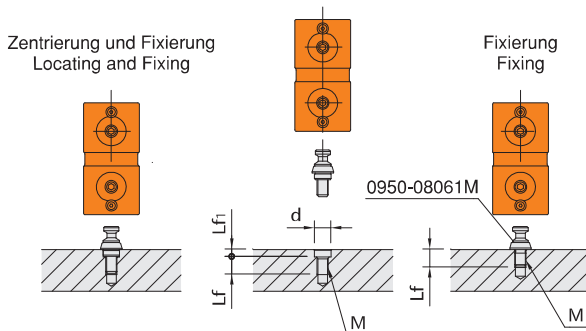


Referenz-Nr. Order No.	D	H (±0.01)	D1	L	H1	W	Spannkraft Clamping Force Kgf	zulässiges Drehmoment Allowable Screw Torque (N-m)	 (g)
0950-06050	30	50	15	34.5	12.5	3	500	4	200
0950-08080	40	80	22	46	20	4	800	8	700
0950-12125	60	125	32	69	30	6	1500	22	2600
0950-16160	80	160	44	91	40	8	2500	50	5800

0950

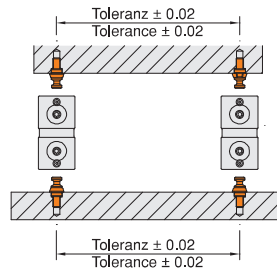


Anwendungsbeispiel / Application Examples



Referenz-Nr. Order No.	d (H7)	Lf	Lf1	M
0950-06050	8	9	5.5	M6
0950-08080	12	13	5.5	M8
0950-12125	18	19	6.5	M12
0950-16160	22	23	8	M16

Referenz-Nr. Order No.	M	D1 (g6)	L2	L1	D	L	D2	D3	W	
0950-06001L	M6	8	5	13	11.5	10	8	4.8	2.5	6
0950-08061L	M6	10	5	17	15.5	16.5	11	6.5	3	17
0950-08001L	M8	12	5	17	15.5	16.5	11	6.5	3	20
0950-12081L	M8	12	5	17	24.5	25	16	9.5	5	52
0950-12001L	M12	18	6	24	24.5	25	16	9.5	5	70
0950-16121L	M12	18	6	24	31.5	33	21	13	6	125
0950-16001L	M16	22	7.5	30	31.5	33	21	13	6	150

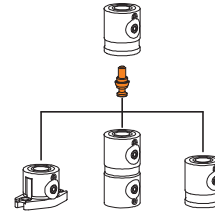
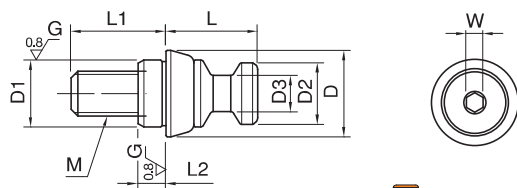


0950

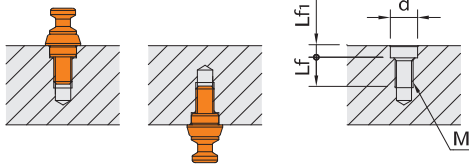
• Toleranz ±0.02

0950

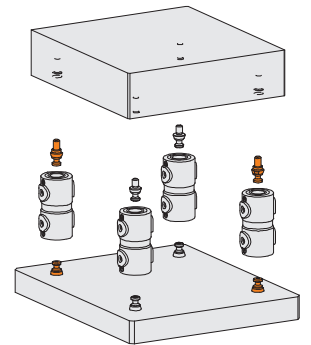
• Tolerance ± 0.02



Anwendungsbeispiel Application Examples



Referenz-Nr. Order No.	d (H7)	Lf	Lf1	M
0950-06001L	8	9	5.5	M6
0950-08061L	10	13	5.5	M6
0950-08001L	12	13	5.5	M8
0950-12081L	12	13	5.5	M8
0950-12001L	18	19	6.5	M12
0950-16121L	18	23	6.5	M12
0950-16001L	22	23	8	M16

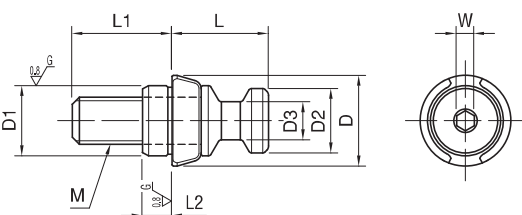
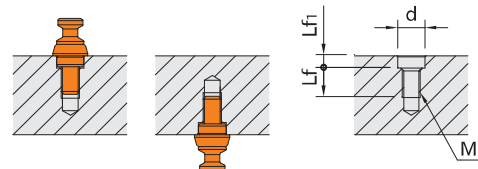


Klemmblock Spannbolzen

5-Axis Clamping Block Puller Bolt

Referenz-Nr. Order No.	M	D1 (g6)	L2	L1	D	L	D2	D3	W	
0950-08061D	M6	10	5	17	15.5	16.5	11	6.5	3	17
0950-08001D	M8	12	5	17	15.5	16.5	11	6.5	3	20
0950-12081D	M8	12	5	17	24.5	25	16	9.5	5	51
0950-12001D	M12	18	6	24	24.5	25	16	9.5	5	70
0950-16121D	M12	18	6	24	31.5	33	21	13	6	123
0950-16001D	M16	22	7.5	30	31.5	33	21	13	6	150

Anwendungsbeispiel Application Examples



Referenz-Nr. Order No.	d (H7)	Lf	Lf1	M
0950-08061D	10	13	5.5	M6
0950-08001D	12	13	5.5	M8
0950-12081D	12	13	5.5	M8
0950-12001D	18	19	6.5	M12
0950-16121D	18	23	6.5	M12
0950-16001D	22	23	8	M16



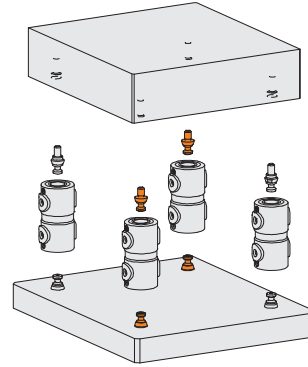
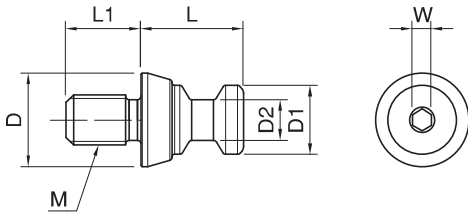
Referenz-Nr. Order No.	M	L1	D	L	D1	D2	W	
0950-06001M	M6	8	11	10	8	4,8	2,5	5
0950-08061M	M6	9	15	16,5	11	6,5	3	13
0950-08001M	M8	12	15	16,5	11	6,5	3	16
0950-12081M	M8	12	24	25	16	9,5	5	46
0950-12001M	M12	18	24	25	16	9,5	5	57
0950-16121M	M12	18	31	33	21	13	6	108
0950-16001M	M16	22	31	33	21	13	6	125

0950

• Toleranz ±0.2


0950

• Tolerance ±0.2



Spannbolzen

5-Axis Clamping Block Puller Bolt

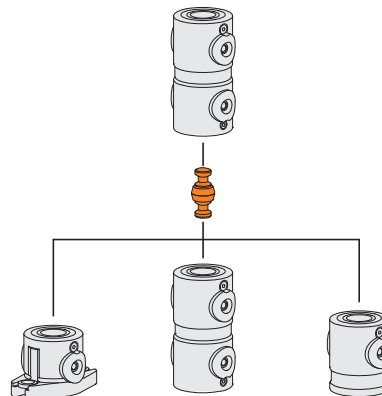
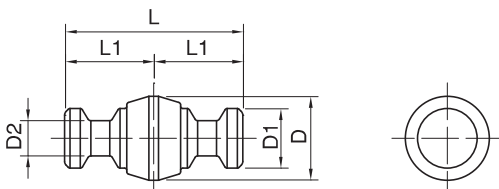
Referenz-Nr. Order No.	D	L	D1	D2	L1	
0950-08001	15,5	33	11	6,5	16,5	24
0950-12001	24,5	50	16	9,5	25	85
0950-16001	31,5	66	21	13	33	190

0950

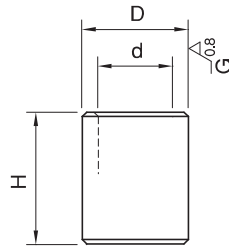
• Wiederholungsgenauigkeit 0,2

0950

• Locating Repeatability is 0.2



Referenz-Nr. Order No.	d	D (h6)	H	
0950-06001KB	6	8	11	2
0950-08001KB	8.5	12	15	7
0950-12001KB	12.5	18	22	22
0950-16001KB	16.5	22	28	35

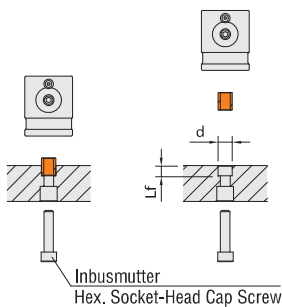


0950

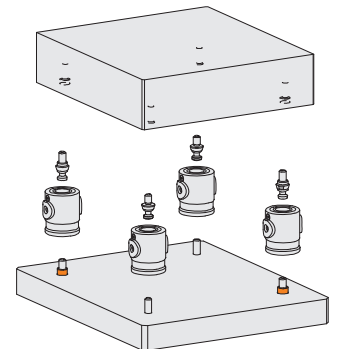
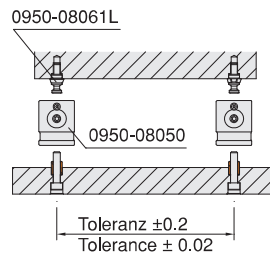
• Toleranz ± 0.2

0950

• Tolerance ± 0.02



Referenz-Nr. Order No.	d (H7)	Lf
0950-06001KB	8	6.5
0950-08001KB	12	8.5
0950-12001KB	18	12.5
0950-16001KB	22	16.5



Referenz-Nr. Order No.	D1 -0.02 -0.05	D	H	H1	M	
0950-06001LS	8	11.5	4	5	M6	4
0950-08001LS	12	15.5	5	5	M8	8
0950-12001LS	18	24.5	8	6	M12	27
0950-16001LS	22	31.5	10	7.5	M16	51
0950-06001SM	8	11.5	4	5	M6	4
0950-08001SM	12	15.5	5	5	M8	8
0950-12001SM	18	24.5	8	6	M12	27
0950-16001SM	22	31.5	10	7.5	M16	51

0950

• Geschliffene Toleranz ± 0.02
• Standard-Toleranz $^{+0.1}_0$

0950

• Stoning Tolerans ± 0.02
• Standerd Tolerance $^{+0.1}_0$

Klemmblock Lokalisierungsbuchse

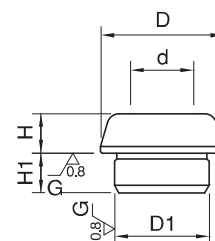
5-Axis Clamping Block Locating Bushings



LS
Geschliffene Toleranz
Stoning Tolerance



SM
Standard-Toleranz
Standard Tolerance

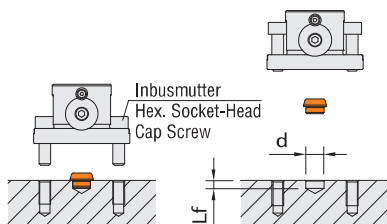


LS
Geschliffene Toleranz
Stoning



SM
Standard
Standard

Anwendungsbeispiel / Application Examples



Referenz-Nr. Order No.	d (H7)	Lf
0950-06001LS	8	5.5
0950-08001LS	12	5.5
0950-12001LS	18	6.5
0950-16001LS	22	8

