

Sechskantmutter, Scheibe, Zubehör

Nut, Washer, Accessories



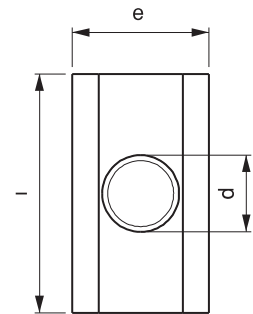
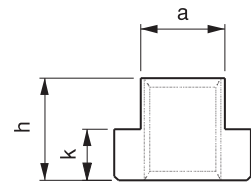
Referenz-Nr. Order No.		a	e	l	h	k	
1710-0608	M6x8	7.7	13	26	10	6	14
1710-0810	M8x10	9.7	15	30	12	6	25
1710-1012	M10x12	11.7	18	36	14	7	49
1710-1214	M12x14	13.7	22	44	16	8	82
1710-1416	M14x16	15.7	25	50	18	9	120
1710-1618	M16x18	17.7	28	56	20	10	165
1710-1820	M18x20	19.7	32	64	24	12	260
1710-2022	M20x22	21.7	35	70	28	14	365
1710-2224	M22x24	23.7	40	80	32	16	535
1710-2428	M24x28	27.7	44	88	36	18	745
1710-3036	M30x36	35.6	54	108	44	22	1390

1710

- schützt T-Kanal bei empfindlichen Maschinenplatten
- Gehärtet
- Schwarz beschichtet
- Qualität 10.

1710

- This clamp protects T-Slot in sensitive machine plates
- Hardened
- Black coating
- Quality 10



Referenz-Nr. Order No.		a	e	h	k	
1730-06	6	5.7	10	8	4	4
1730-08	8	7.7	13	10	6	10
1730-10	10	9.7	15	12	6	16
1730-12	12	11.7	18	14	7	27
1730-14	14	13.7	22	16	8	50
1730-16	16	15.7	25	18	9	70
1730-18	18	17.7	28	20	10	95
1730-20	20	19.7	32	24	12	150
1730-22	22	21.7	35	28	14	210
1730-24	24	23.7	40	32	16	310
1730-28	28	27.7	44	36	18	430
1730-36	36	35.6	54	44	22	800
1730-42	42	41.6	65	52	26	1400

1730

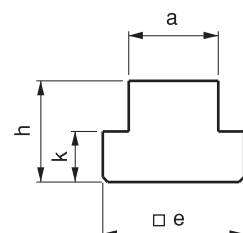
- Gewindebohren und lochen nach Bedarf

1730

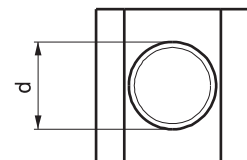
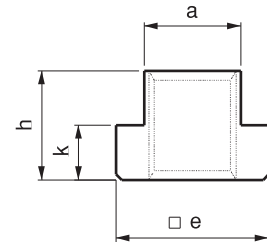
- Arbitrary thread cutting can be applied

Muttern-Rohling für T-Nuten

T-Nut without Hole



Referenz-Nr. Order No.	dx	a	e	h	k	
1750-0506	M5x6	5.7	10	8	4	4
1750-0608	M6x8	7.7	13	10	6	10
1750-0810	M8x10	9.7	15	12	6	12
1750-0812	M8x12*	11.7	18	14	7	22
1750-1012	M10x12					20
1750-0814	M8x14*	13.7	22	16	8	40
1750-1014	M10x14*					37
1750-1214	M12x14					30
1750-0816	M8x16*	15.7	25	18	9	60
1750-1016	M10x16*					55
1750-1216	M12x16*					55
1750-1416	M14x16					45
1750-0818	M8x18*	17.7	28	20	10	90
1750-1018	M10x18*					87
1750-1218	M12x18*					80
1750-1418	M14x18*					75
1750-1618	M16x18					65
1750-1620	M16x20*					19.7
1750-1820	M18x20	105				
1750-1622	M16x22*	21.7	35	28	14	170
1750-1822	M18x22*					160
1750-2022	M20x22					150
1750-1624	M16x24*	23.7	40	32	16	260
1750-2024	M20x24*					240
1750-2224	M22x24					220
1750-1628	M16x28*	27.7	44	36	18	375
1750-2028	M20x28*					350
1750-2228	M22x28*					330
1750-2428	M24x28					330
1750-2436	M24x36*	35.6	54	44	22	665
1750-3036	M30x36					585
1750-3642	M36x42	41.6	65	52	26	1025
1750-4248	M42x48	47.6	75	60	30	1600


DIN 508
1750

- Für die Lebensdauer der T-Nutenstein muss das gesamte Gewindeteil genutzt werden.
- Gehärtet
- Schwarz beschichtet
- Qualität 10.

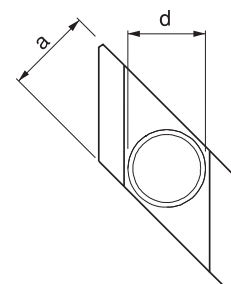
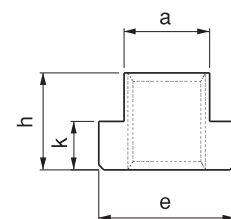
1750

- Screwing must be done on the entire thread part for the endurance of T-Nut
- Hardened
- Black coating
- Quality 10

Referenz-Nr. Order No.	dx	a	e	h	k	
1770-0810	M8x10	9.7	15	12	6	10
1770-1012	M10x12	11.7	18	14	7	15
1770-1014	M10x14*	13.7	22	16	8	30
1770-1214	M12x14					25
1770-1416	M14x16	15.7	25	18	9	40
1770-1018	M10x18*	17.7	28	20	10	70
1770-1618	M16x18					60
1770-1620	M16x20*	19.7	32	24	12	95
1770-1820	M18x20					90
1770-1622	M16x22*	21.7	35	28	14	135
1770-2022	M20x22					125
1770-1628	M16x28*	27.7	44	36	18	330
1770-2028	M20x28*					295
1770-2428	M24x28					265

Mutter für T-Nut "Rhombus"

Graded T-Nut

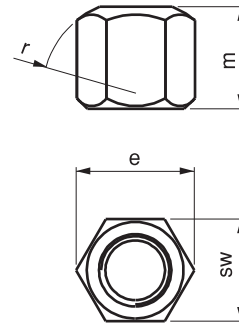

Ürün Nr. 1770 Dereceli T-Pabuç

- Vorteil: Stecken von oben und spannen bei Platten mit T-Nuten
- Gehärtet
- Schwarz beschichtet
- Qualität 10.

Product Nr. 1770 Graded T-Nut

- It has the feature of making the coupling by entering T-Slot plates from the top
- Hardened
- Black coating
- Quality 10

Referenz-Nr. Order No.		sw	e	m	r	
1790-06	M6	10	11.5	9	9	5
1790-08	M8	13	15	12	12	9
1790-10	M10	17	19.6	15	15	20
1790-12	M12	19	21.9	18	17	25
1790-14	M14	22	25.4	21	20	40
1790-16	M16	24	27.7	24	22	55
1790-18	M18	27	31.2	27	24	80
1790-20	M20	30	34.6	30	27	110
1790-22	M22	32	36.9	33	30	130
1790-24	M24	36	41.5	36	32	190
1790-30	M30	46	53.1	45	41	400
1790-36	M36	55	63.5	54	50	680
1790-42	M42	65	75	63	58	1150



DIN 6330B

1790

- bei flachen Oberflächen verwendbar mit Scheibe DIN 6340
- bei Radius-Oberflächen verwendbar mit Scheiben DIN 6319D und DIN 6319G
- Gehärtet
- Schwarz beschichtet
- Qualität 10.

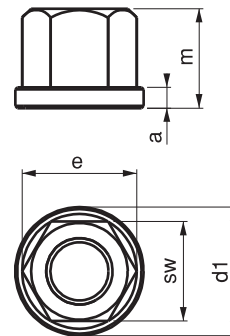
1790

- Flat surface is used with DIN 6340 Washer
- This nut is used with Rad-top surface DIN 6319D and DIN 6319G washers
- Hardened
- Black Coating
- Quality 10

Referenz-Nr. Order No.		sw	e	m	a	d1	
1810-08	M8	13	14.7	12	3.5	18	12
1810-10	M10	17	19.2	15	4	22	25
1810-12	M12	19	21.5	18	4	25	30
1810-14	M14	22	24.9	21	4.5	28	50
1810-16	M16	24	27.2	24	5	31	65
1810-18	M18	27	30.6	27	5	34	90
1810-20	M20	30	34	30	6	37	130
1810-22	M22	32	36.3	33	6	40	155
1810-24	M24	36	40.8	36	6	45	220
1810-30	M30	46	52.3	45	8	58	465
1810-36	M36	55	62	54	10	68	500
1810-42	M42	65	75	63	12	80	1340

Sechskantmutter mit Bund

Nut with Washer



DIN 6331

1810

- Gehärtet
- Schwarz beschichtet
- Qualität 10.

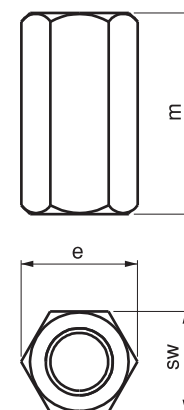
1810

- Hardened
- Black Coating
- Quality 10

Referenz-Nr. Order No.		sw	e	m	
1830-06	M6	10	11.7	18	8
1830-08	M8	13	15	24	19
1830-10	M10	17	19.6	30	40
1830-12	M12	19	21.6	36	55
1830-14	M14	22	25.4	42	90
1830-16	M16	24	27.7	48	115
1830-18	M18	27	31.2	54	165
1830-20	M20	30	34.6	60	230
1830-22	M22	32	36.9	66	245
1830-24	M24	36	41.5	72	400
1830-30	M30	46	53.1	90	840
1830-36	M36	55	63.5	108	1430
1830-42	M42	65	75	126	2330

Verlängerungsmutter

Extension Nut



DIN 6334

Ürün Nr. 1830 Uzatma Somun

- Verwendung zur Verlängerung von Stift-/Schrauben für T-Nuten DIN 787 / DIN 6379
- Gehärtet
- Schwarz beschichtet
- Qualität 10.

Product Nr. 1830 Extension Nut

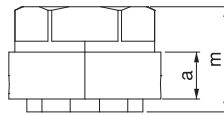
- It is used in DIN 787 T-Studs and DIN 6379 Straight Studs as extension
- Hardened
- Black Coating
- Quality 10

Referenz-Nr. Order No.	Gewinde metric	a	d1	e	m	sw	
1840-16	M16	11.5	34	30.7	27.5	27	105
1840-20	M20	14	44	38.8	33	34	210
1840-24	M24	18.5	50.4	46	35	41	365



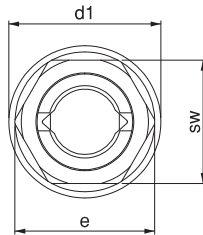
1840

- Ermöglicht schnelles Gleiten bei langen Gewinden, mit Mutter in geöffneten Position.
- Gehärtet
- Verzinkt
- Qualität 10.



1840

- Enables fast sliding on long threads, with nut at open position.
- Hardened
- Zinc Coating
- Quality 10

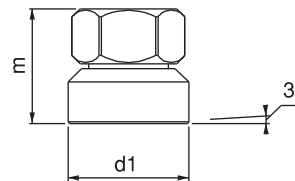


Sechskantmutterereinheit mit beweglichem Kopf

Referenz-Nr. Order No.		sw	d1	m	
1850-08	M8	13	17	14	10
1850-10	M10	17	21	18	30
1850-12	M12	19	24	22	40
1850-16	M16	24	30	28	70
1850-20	M20	30	36	35	140
1850-24	M24	36	44	43	260

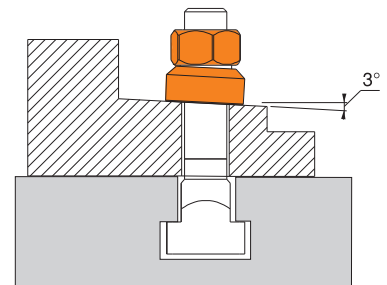
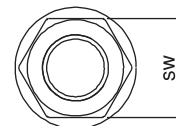
1850

- Vorteil bei winkligen Auflageflächen durch bewegliche Eigenschaft
- Gehärtet
- Schwarz beschichtet
- Qualität 10.



1850

- It provides advantage for using on angled surfaces due to the movement of the washer within itself
- Hardened
- Black Coating
- Quality 10



Referenz-Nr. Order No.	Gewinde metric	Zollgewinde whitworth	d1	d2	s	
1870-06	M6	1/4	6.4	17	3	6
1870-08	M8	5/16	8.4	23	4	10
1870-10	M10	3/8	10.5	28	4	16
1870-12	M12	1/2	13	35	5	30
1870-14	M14	-	15	40	5	40
1870-16	M16	5/8	17	45	6	60
1870-18	M18	-	19	45	6	60
1870-20	M20	3/4	21	50	6	70
1870-22	M22	7/8	23	50	8	90
1870-24	M24	7/8	25	60	8	140
1870-30	M30	1 1/8	31	68	10	215
1870-36	M36	1 1/4	38	80	12	360
1870-42	M42	1 1/2	44	98	15	640

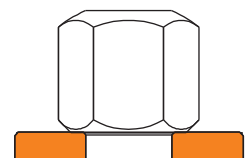
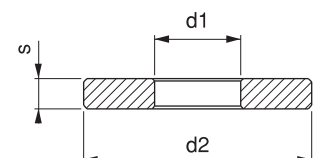
DIN 6340 1870

- Gehärtet
- Schwarz beschichtet

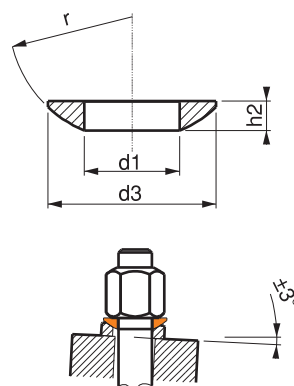
DIN 6340 1870

- Hardened
- Black Coating

Scheibe



Referenz-Nr. Order No.		d1	d3	h2	r	
1890-06	M6	6.4	12	2.3	9	1.5
1890-08	M8	8.4	17	3.2	12	2.5
1890-10	M10	10.5	21	4.0	15	5
1890-12	M12	13	24	4.6	17	7
1890-14	M14	15	28	5.0	22	10
1890-16	M16	17	30	5.3	22	15
1890-20	M20	21	36	6.3	27	20
1890-24	M24	25	44	8.2	32	40
1890-30	M30	31	56	11.2	41	95
1890-36	M36	37	68	14.0	50	190
1890-42	M42	43	78	17.0	58	297



DIN 6319C

1890

- kompatibel mit Scheiben DIN 6319D und DIN 6319G auf winkelförmigen Flächen
- Gehärtet
- Schwarz beschichtet

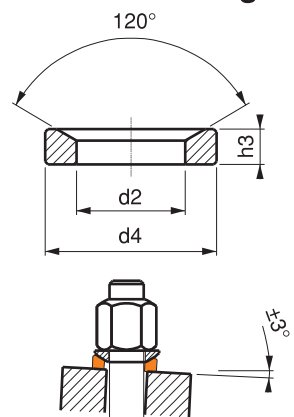
1890

- This washer is used with DIN 6319G washers on angled surfaces
- Hardened
- Black Coating

Kegelscheibe / Kegelpfanne

Graded Washer

Referenz-Nr. Order No.		max. KN	d2	d4	h3	
1910-06	M6	9	7.1	12	2.8	2
1910-08	M8	17	9.6	17	3.5	4
1910-10	M10	26	12	21	4.2	6.5
1910-12	M12	38	14.2	24	5	10
1910-14	M14	53	16.5	28	5.6	10
1910-16	M16	73	19	30	6.2	15
1910-20	M20	117	23.2	36	7.5	25
1910-24	M24	168	28	44	9.5	55
1910-30	M30	269	35	56	12	120
1910-36	M36	394	42	68	15	220
1910-42	M42	542	49	78	18	365



DIN 6319D

1910

- verwendbar mit Kugelscheibe DIN6319C auf winkelförmigen Flächen
- Gehärtet
- Schwarz beschichtet

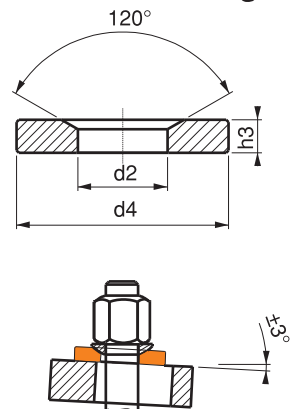
1910

- This washer is used with DIN 6319C rad-top washers on angled surfaces
- Hardened
- Black Coating

Kegelscheibe / Kegelpfanne

Graded Washer

Referenz-Nr. Order No.		d2	d4	h3	
1930-06	M6	7.1	17	4	5.5
1930-08	M8	9.6	24	5	13
1930-10	M10	12	30	5	19
1930-12	M12	14.2	36	6	32
1930-14	M14	16.5	40	6	45
1930-16	M16	19	44	7	65
1930-20	M20	23.2	50	8	90
1930-24	M24	28	59	10	150
1930-30	M30	35	68	10	180
1930-36	M36	42	79	12	285
1930-42	M42	49	100	15	640



DIN 6319G

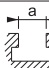
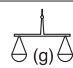
1930

- verwendbar mit Kugelscheibe DIN6319C auf winkelförmigen Flächen
- im Vergleich zu 6319D verwendbar bei größeren Löchern
- Gehärtet
- Schwarz beschichtet

1930

- This washer is used with DIN 6319C rad-top washers on angled surfaces
- According to DIN 6319D, it is used in the holes with bigger diameter
- Hardened
- Black Coating



Referenz-Nr. Order No.		
1950-1214	12-14	25
1950-1618	16-18	45
1950-2022	20-22	45
1950-2428	24-28	70



1950

- zur Reinigung von T-Nuten

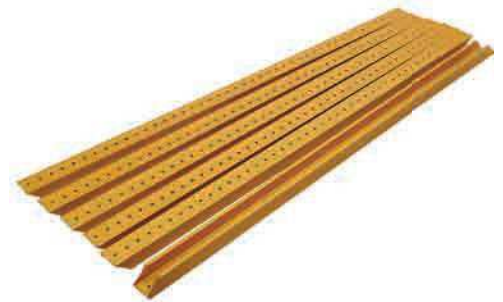
1950

- This scraper is used to clean T-Slots

T-Nut Abdeckung

Milling T-Slot Cover

Referenz-Nr. Order No.	Breite Width (mm)	Länge Length (mm)	Anzahl Quantity
1955-T010	10	300	6
1955-T012	12	400	6
1955-T014	14	400	6
1955-T016	16	400	6
1955-T018	18	450	6
1955-T181	18	1000	5
1955-T205	20	500	10
1955-T020	20	1000	5
1955-T022	22	1000	5
1955-T024	24	1000	5
1955-T028	28	1000	5
1955-T036	36	1000	5

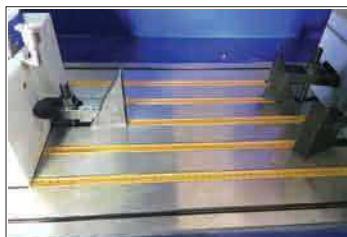


1955

- Es verhindert, dass unnötige Späne abfließen und verschmutzen.
Es wird zur Reinigung von T-Nuten verwendet.
- Material: Aluminium

1955

- It prevents unnecessary shavings filling and become dirty.
It is used to clean T-Slots.
- Material: Aluminum



Referenz-Nr. Order No.		
1960-110	14-16-18-20	1160

1960

- Gehärtet
- Schwarz beschichtet

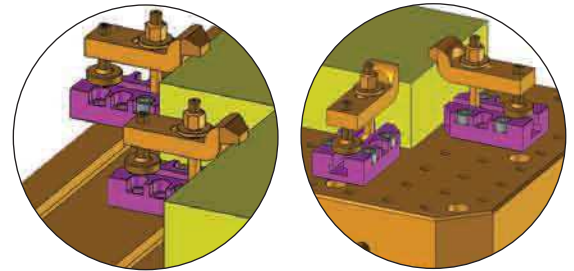
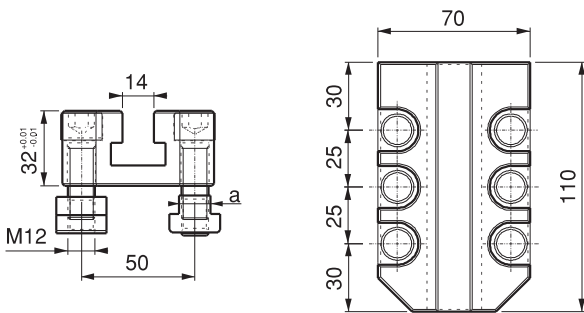
Es bietet die Möglichkeit, das Werkstück an einer geeigneten Stelle der Platte während des nichtproportionalen Anschlags des Werkstücks zu befestigen.



1960

- Hardened
- Black coating

It provides convenience to fix the work piece on a suitable place of the plate during the non-proportional stopping of the work piece to be applied on the plate of the bench



Referenz-Nr. Order No.		Ø D	Ø d	L	L1	
1970-10	M10	27	10.5	35	20	65
1970-12	M12	27	12.5	40	33	70
1970-14	M14	28	14.5	40	30	60
1970-16	M16	37	16.5	45	30	110
1970-18	M18	37	18.5	45	40	115
1970-20	M20	37	21	45	42	105
1970-22	M22	37	23	45	45	120
1970-24	M24	45	25	50	45	170

1970

- Arbeitserleichterung durch Stützen bei Werkstückaufnahme bzw. -abnahme
- Schnelles und sicheres Entspannen wird gewährleistet.
- Schwarz beschichtet

1970

- This washer provides convenience of using in coupling and dismantling processes by lifting the clamp evenly
- Black coating

Spanneisenhalter federnd

for Lifting the Washer

