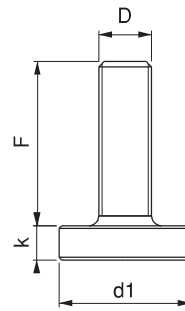


# Stützelemente

*Supports*



Referenz-Nr. Order No.	D x F	d1	k	 (g)
1490-08032	M8x32	25	8	40
1490-10042	M10x42	30	8	60
1490-12050	M12x50	36	10	110
1490-12095	M12x95	36	10	150
1490-16062	M16x62	45	13	240
1490-16097	M16x97	45	13	285
1490-16117	M16x117	45	13	310
1490-20062	M20x62	50	13	320
1490-20097	M20x97	50	13	390
1490-20117	M20x117	50	13	430
1490-24081	M24x81	50	14	445
1490-24116	M24x116	50	14	555
1490-30180	M30x180	70	24	1650

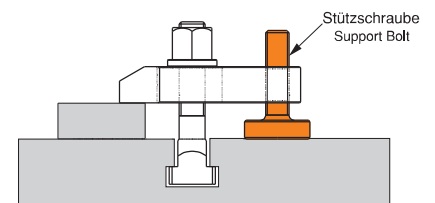


### 1490

- Schwarz beschichtet

### 1490

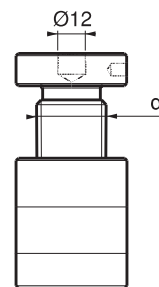
- Black Coating



## Höhen-Richtschaubstock

### Trapeze Thread Lifter Support

Referenz-Nr. Order No.		d			 kgf	 (g)
1510-023030	23-30	M16	34	32	1000	140
1510-040060	40-60	M16	34	32	1800	250
1510-042052	42-52	Tr 30x4	50	50	6000	570
1510-050070	50-70	Tr 30x4	50	50	6000	680
1510-070100	70-100	Tr 30x4	50	50	6000	960
1510-100140	100-140	Tr 30x4	50	50	6000	1395
1510-140220	140-220	Tr 30x4	54	54	6000	2285
1510-210330	210-330	Tr 30x6	58	58	8000	3950
1510-260430	260-430	Tr 30x6	68	68	8000	7250



### 1510

- kompatibel mit Spannbacken DIN 6314-6315-6316
- Loch 12 mm auf beweglichem Werkstück verwendbar mit
- Nr. 1555-1560-1565-1570-1575 aufeinander zu unterschiedlichen Zwecken
- Schwarz beschichtet
- Stützschraube: gehärtet

### 1510

- Nr.1510 Lifters are used in DIN 6314-6315-6316 clamps as the lifter support
- Hole with Ø12mm taking place on the moving part are used with the lifters with the Reference Nr.1 555-1560-1565-1570-1575 on top of each other and also used with different purpose.
- Black Coating
- Support Bolt : Hardened



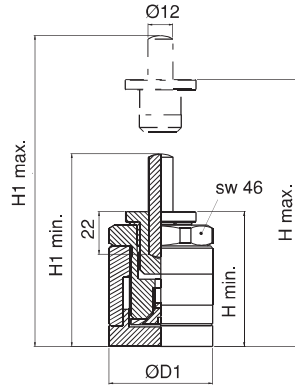
Referenz-Nr. Order No.	H min.	H max.	D1	Ø12x50 H1 min.- H1 max.	Ø12x80 H1 min.- H1 max.	↓ Kgf	⚖ (g)
1515-065085	65	85	50	93-113	123-143	3000	810
1515-085125	85	125	50	113-153	143-183	3000	1050

**1515**

- Vorteil bei Horizontal-Spannen durch Magnet insbesondere bei Injektionsmaschinen
- Gehärtet
- Schwarz beschichtet

**1515**

- Because of magnetic it holds its own weight. Therefore it provides using advantage in horizontal clamping especially on injection machines.
- Hardened
- Black coating



## Schraubbock mit flacher Auflage und Magnetfuß - Gewinde

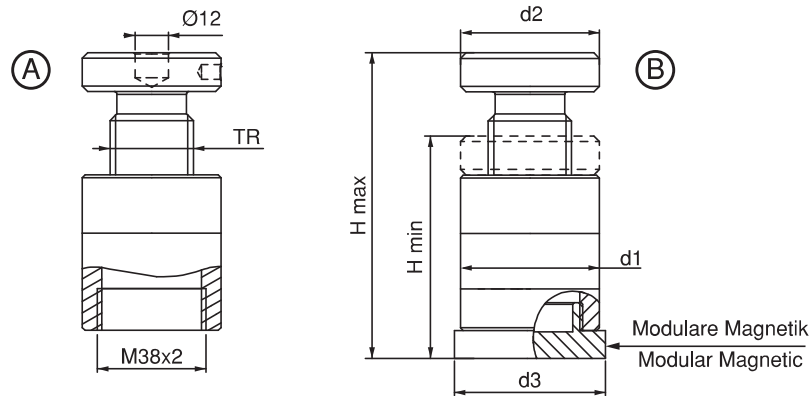
Referenz-Nr. Order No.	H min-max. A	H min-max. B	TR	d1	d2	d3	↓ kgf	⚖ (g)
1517-04262	42-52	52-62	30x4	50	50	53.5	6000	700
1517-05080	50-70	60-80	30x4	50	50	53.5	6000	770
1517-70110	70-100	80-110	30x4	50	50	53.5	6000	1050

**1517**

- Schwarz beschichtet

**1517**

- Black coating



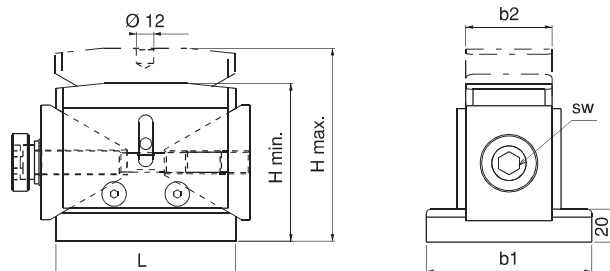
Referenz-Nr. Order No.	H min.	H max.	b1	b2	L	sw	↑ kgf	⚖ (g)
1520-050063	50	63	-	40	63	8	4000	1890
1520-100125	100	125	115	60	125	14	10000	9910
1520-170190	170	190	145	80	175	22	25000	28480

**1520**

- konstruiert für Stützen und Heben schwerer Werkstücke
- Gehärtet
- Schwarz beschichtet

**1520**

- Designed for supporting and lifting of heavy work pieces
- Hardened
- Black coating



## Richtkeil Support Block



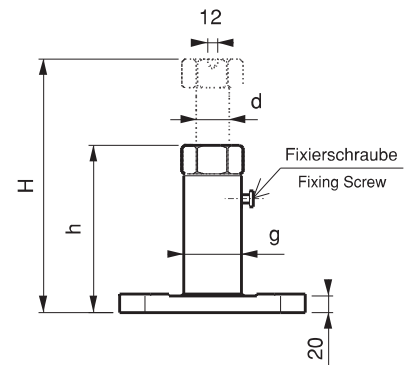
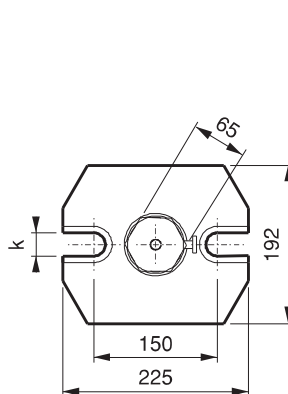
Referenz-Nr. Order No.		d	g	k	kgf	(kg)
1530-200	200-300	Tr40x7	69	28	8000	10.0
1530-280	280-460	Tr40x7	69	28	6000	11.8
1530-430	430-750	Tr40x7	69	28	5000	14.2
1530-710	710-1250	Tr40x7	69	28	4000	20.9

**1530**

- Verwendung bei hohen Teilen
  - Grundkörper: Statisch lackiert
- Es bietet verschiedene Nutzungsvorteile, wenn das Loch Ø12mm verwendet wird, während 1555-1560-1560-1565-1565-1570-1575 referenznummerierte Produkte verwendet werden.

**1530**

- This is a trapeze thread lifting support having the purpose of using with High Pieces.
- Body and stational painting. It provides different usage advantages when Ø12mm hole is used with 1555-1560-1565-1570-1575 reference numbered products taking place.



### Schraubblock mit Trapezgewinde

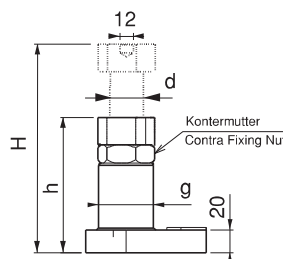
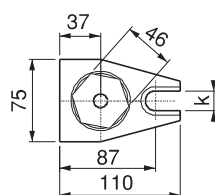
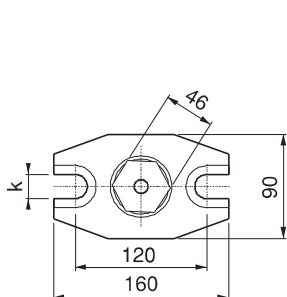
Referenz-Nr. Order No.		d	g	k	kgf	(kg)
1550-100	100-140	Tr30x6	49	18	6000	2.05
1550-140	140-200	Tr30x6	49	18	6000	2.45
1550-200	200-320	Tr30x6	49	22	4000	3.90
1550-320	320-550	Tr30x6	49	22	2500	5.15

**1550**

- Verwendung bei hohen Teilen
  - Grundkörper: Statisch lackiert
- Es bietet verschiedene Nutzungsvorteile, wenn das Loch Ø12mm verwendet wird, während 1555-1560-1560-1565-1565-1570-1575 referenznummerierte Produkte verwendet werden.

**1550**

- This is a trapeze thread lifting support having the purpose of using with High Pieces.
- Body and stational painting. It provides different usage advantages when Ø12mm hole is used with 1555-1560-1565-1570-1575 reference numbered products taking place.



Referenz-Nr. Order No.	h	Ø d	
1555	10	37	75

Zubehör für Richt- und Stützelemente kompatibel mit Nr. 1510 + 1517 + 1530 + 1550

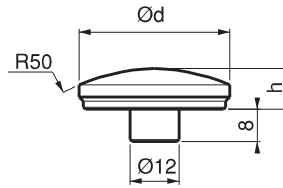
These products are used with the product Nos 1510-1517-1530-1550 taking place.

**1555**

- Vorteil bei winkligen Oberflächen
- Schwarz beschichtet

**1555**

- This part provides usage convenience on angled surfaces
- Black Coating


**Kugelaufsatz**  
Rad-top Support

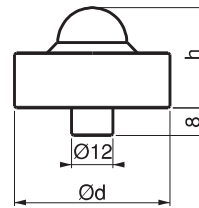

Referenz-Nr. Order No.	h	Ø d		Kgf	
1560	25	45	3000	220	

**1560**

- Vorteil bei ungleichförmigen Oberflächen
- Schwarz beschichtet

**1560**

- This part provides usage convenience on irregular surfaces
- Black Coating


**Aufsatz mit drehbarer Kugel**  
Ball Support

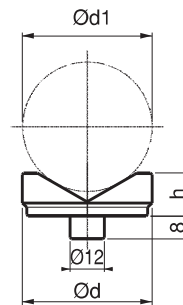
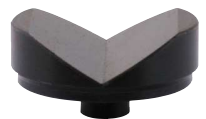

Referenz-Nr. Order No.	h	Ø d	Ø d1		
			min	max	
1565	15	45	10	50	130

**1565**

- Prisma für zylindrische Werkstücke
- Schwarz beschichtet

**1565**

- V clamping block support for cylindrical pieces
- Black Coating


**Prismaufsatz**  
V-Clamping Block


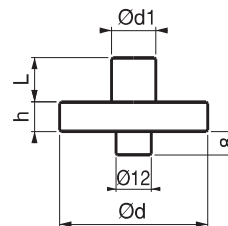
Referenz-Nr. Order No.	h	Ø d	Ø d1	L	
1570	12	50	15	20	220

**1570**

- Stütze bei geformten Werkstücken
- Schwarz beschichtet

**1570**

- This part provides support for formed pieces by entering in between
- Black Coating


**Fixieraufsatz**  
Pin Support

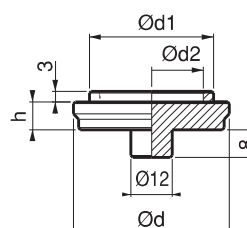

Referenz-Nr. Order No.	h	Ø d	Ø d1	Ø d2	
1575	8	45	35.8	30	105

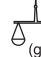
**1575**

- Verwendung bei Schraubstock
- Schwarz beschichtet

**1575**

- This part is used as Intermediary Centering Mean when used with Trapeze Thread Lifters
- Black Coating


**Zentrierplatte**  
Intermediary Centering Mean

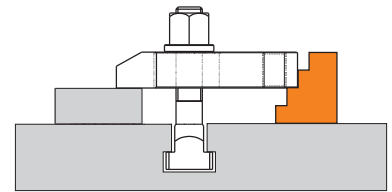
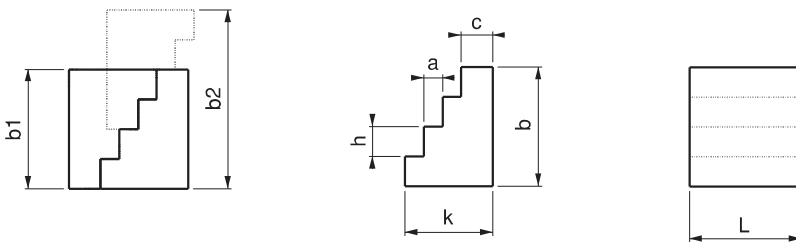

Referenz-Nr. Order No.	h	a	c	k	b	L	b1	b2	
1580-050	13	8	13	37	52	50	52	78	460
1580-060	16	10	17	47	64	60	64	96	860
1580-070	19	13	18	57	76	70	76	114	1420

**1580**

- Schwarz beschichtet



**1580**

- Black Coating



**gezahnte Spannunterlagen**

Serrated Thread Combined Support

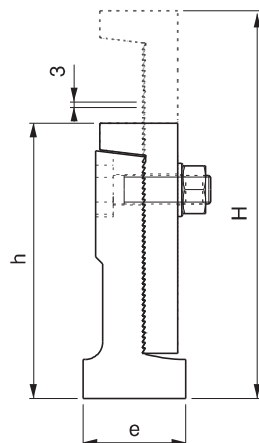
Referenz-Nr. Order No.	h-H	e	 kgf	
1585-050	110-150	48x48	4000	1120
1585-060	155-220	60x58	5000	2710
1585-080	220-340	80x78	6000	6560

**1585**

- Stufenhöhe 3 mm
- Schwarz beschichtet

**1585**

- Lifting gap (screw pitch) is 3 millimeters
- Black Coating



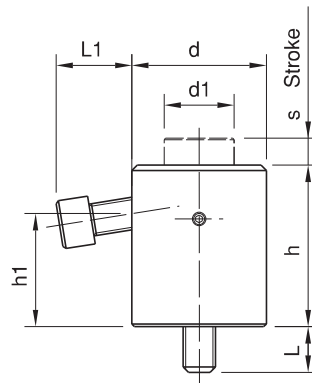
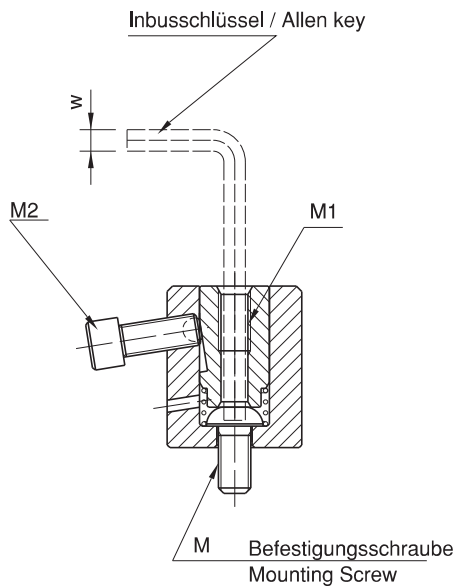
Referenz-Nr. Order No.	h	s	M1	d1	d	M	L	w	h1	L1	M2	zulässiges Drehmoment Allowable Screw Torque(Nm) a	Stütze Kapazität Support Capacity (kgf)	Kolbenfederkraft Piston Spring Force (N)	(g)
1588-060	33	6	M6x12	14	28	M6	10	4	22	14.1	M6x16	7.5	400	10~22	150
1588-080	42	10	M8x16	19	35	M8	15	5	28.5	18.8	M8x20	14	600	10~27	300
1588-100	50	10	M10x20	22	42	M10	14	6	34	23.8	M10x25	18	750	14~28	540
1588-120	60	10	M12x24	26	50	M12	17	8	42	28.5	M12x30	22	900	15~30	865
1588-160	70	10	M16x32	33	60	M16	22	10	47	26.5	M12x30	25	900	15~35	1.390

**1588**

• Schwarz beschichtet

**1588**

• Black coating


**Anwendungsbeispiel / Application Examples**
