


| Referans Nr. | D1 | M   | L1 | L  | D  | L2   | L3 | D2  | W  | L4 | <br>(g) |
|--------------|----|-----|----|----|----|------|----|-----|----|----|--|
| 1476-00012   | 12 | M12 | 13 | 38 | 20 | 21.5 | 2  | 6.5 | 10 | 4  | 40   |
| 1476-00016   | 12 | M16 | 17 | 38 | 20 | 21.5 | 2  | 6.5 | 10 | 4  | 55   |

**Ürün Nr. 1476 Tek Dokunuş Bağlama Civatası**

- Siyah Kaplama

**Product Nr. 1476 Clamping Screws**

- Black coated

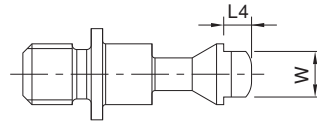
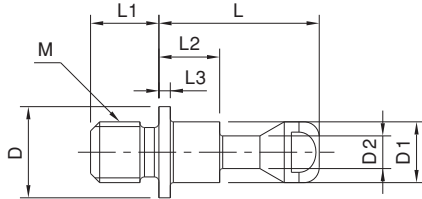


**Not**

- Özel bağlama vidalar (farklı vida boyları) istek üzerine üretim yapılır.

**Note**

- Custom Clamping Screws (different screw thread sizes) are available on request.



Çektirme civataları önerilen aralık toleransında olmalı  
Recommended Spacing Tolerance in Use of Clamping Screws

